

Drum sieve

MKZM



Efficient precleaning. Reliable removal of coarse impurities.

Application

This drum sieve, which is patented in numerous countries, can be applied in many different ways for precleaning materials. It is successfully used in the reception of granular, mealy, and floury bulk materials in grain mills, bulk storage systems, and other plants in the food processing and feed manufacturing industries. The drum sieve separates coarse impurities such as pieces of straw, bag tapes, paper, pieces of wood, and corn (maize) leaves and cobs, etc. This protects downstream processing and conveying equipment from malfunctions and damage.

Design

The rugged, overhung screening drum is divided into an inlet and an outlet cylinder, made of sheet steel and provided with holes ranging from 10 to 60 mm. The screening drum is highly self-cleaning and is additionally supported in this function by a scraper brush. All components are installed inside an enclosed housing that is equipped with an aspiration connection.

The following design versions are available:

- Drive with slip-on gearing or free shaft end
- Inlet with or without dead box
- Wear protection:
 - without specific measures for non-abrasive materials
 - with anti-wear inserts in the material inlet and outlet (e.g. Creusabro or Rhino-Hyde) for abrasive materials

Mode of operation

The material to be screened is fed through the inlet channel to the inside of the screening drum and turned over. The grain drops through the screen perforations, and the coarse impurities are directed to the outlet by a guide screw. This ensures reliable separation of the coarse impurities.



MKZM drum sieve.

High throughput with low space and power requirements.



Inlet channel to the inside of the screening drum.

High throughputs. Low power requirement.



MKZM drum sieves.
In service in an English flour mill.



MKZM drum sieves.
In service in a Chinese flour mill.

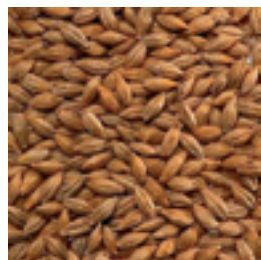
- High throughputs
- Reliable separation of coarse impurities
- Proven, sturdy design
- Easy maintenance



Corn (maize)



Wheat



Barley



Rice

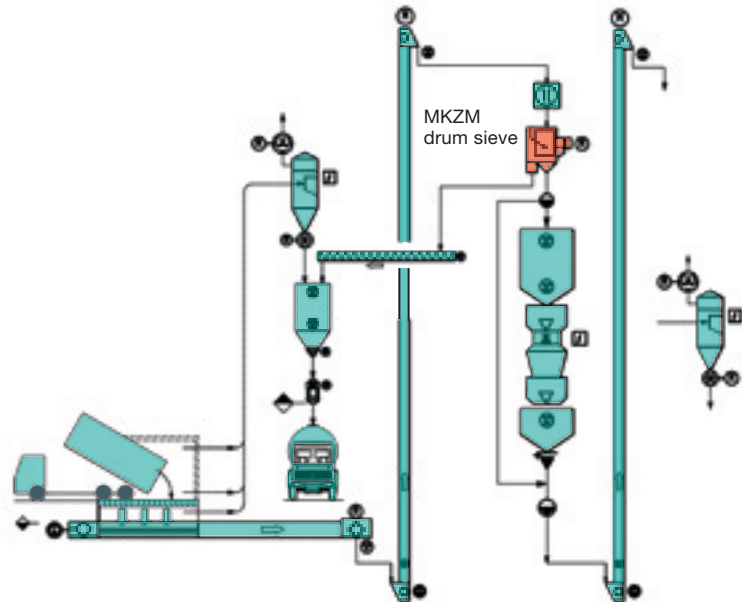


Oats



Soybeans

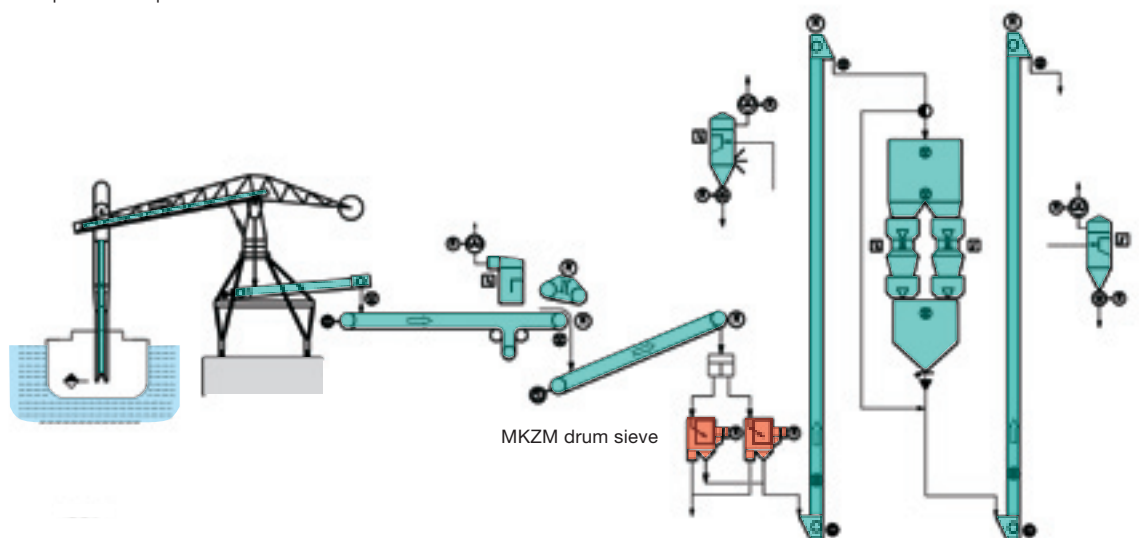
High versatility.
Easy maintenance.



Example of a truck unloading facility
with MKZM drum sieve for precleaning and weighing system.

Features

- High throughput up to 500 t/h grain per machine
- Sturdy design
- High degree of self-cleaning
- Reliable separation of coarse impurities
- Fast and easy screening drum changes
- Low space and power requirements

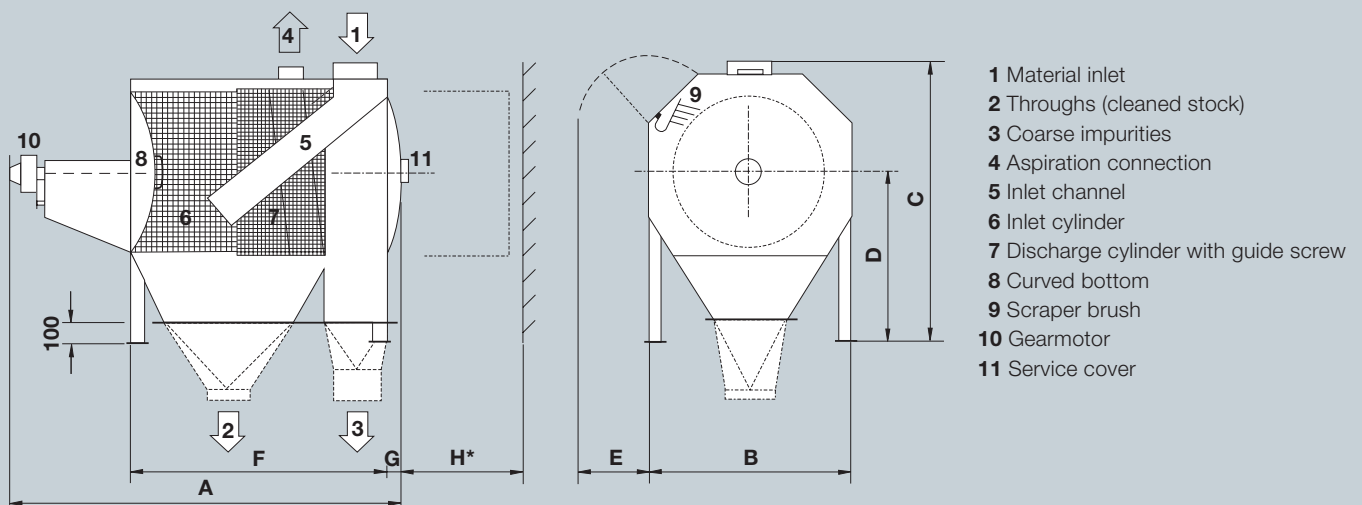


Example of a ship unloading facility with conveying system to MKZM drum sieve
for precleaning and weighing system.

Minimized space and power requirements. High throughputs.

Throughput range according to hole size, in t/h
Examples:

Material	MKZM 6375	MKZM 9510	MKZM 1211
Wheat	25–100	100–200	200–500
Corn (maize)	25–90	90–180	180–450
Soybeans	25–100	100–200	200–500
Barley/oats	25–80	80–160	160–320
Cocoa beans	3–20	20–40	40–80
Rice	15–50	50–100	100–200
Finely ground grain up to 0.44 t/m ³	5–15	15–30	30–60
Coarsely ground grain 0.55–0.60 t/m ³	15–60	60–120	120–240
Pellets Ø 9 mm, 0.66 t/m ³	20–90	90–180	180–360



Technical data

Model	Screening drum		Dimensions in mm									Air requirement m ³ /min	Motor kW	Approx. weights in kg			Volume sea-packed m ³
	Ø	Length	A	B	C	D	E	F	G	H*	net			gross	sea-packed		
MKZM 6375	630	778	1726	824	1242	750	400	1086	42	900	8	0.37	290	420	485	2.8	
MKZM 9510	950	1078	2181	1130	1645	1000	450	1486	62	1200	12	0.55	470	680	765	6.5	
MKZM 1211	1250	1190	2469	1450	2045	1250	500	1746	90	1300	16	1.10	740	1020	1120	8.2	

H*: Space required for removing the screening drum

Bühler AG
CH-9240 Uzwil, Switzerland
T +41 71 955 11 11
F +41 71 955 39 49
www.buhlergroup.com

