



DISPOSABLE
MEDICAL
FACE MASK



3D FISH SHAPE
PROTECTIVE
FACE MASK



**ICY
MASK**



GUANGDONG TAIENKANG PHARMACEUTICAL CO.,LTD.
SHANTOU T&K MEDICAL EQUIPMENT FACTORY CO.,LTD.
STOCK CODE 301263



WHY CHOOSE US?



Award Product Winning Design

Government designated mask
purchasing and storage enterprise



State Of The Art Manufacturing

Professional production
of masks



Trustworthy

Global sales exceed
700 million masks

ABOUT US

T&K is an integrated pharmaceutical group focused on pharmaceutical R&D, production and sales. Founded in 1999, T&K is an OTC listed company (stock code:301263) in China with an annual turnover exceeding \$84 million. The company currently has 8 subsidiaries operating across China and more than 1,300 employees across the world.

As one of the largest pharmaceutical companies in China, T&K has developed a very mature integration of pharmaceutical R&D, production, sales and services. For more than 20 years, we supply quality medical products to thousands of hospitals and more than 90,000 pharmacies all over the world.

28

Marketing Offices

3000+

Distributors

200000+

Terminal Pharmacies

1000+

Hospitals With
28 Provinces Covered

PROFESSIONAL PRODUCTION OF MASKS FOR 20+ YEARS

Established in 2002, Shantou T&K Medical Equipment Factory Co., Ltd. is one of Guangdong T&K Pharmaceutical Co., Ltd.'s wholly owned subsidiaries, specializing in the production of medical devices for more than 20 years. Positioned in the front line of the medical device industry in China, our qualified management structure strictly adheres to Good Manufacturing Practices, ISO 9001:2015 and ISO 13485:2016.



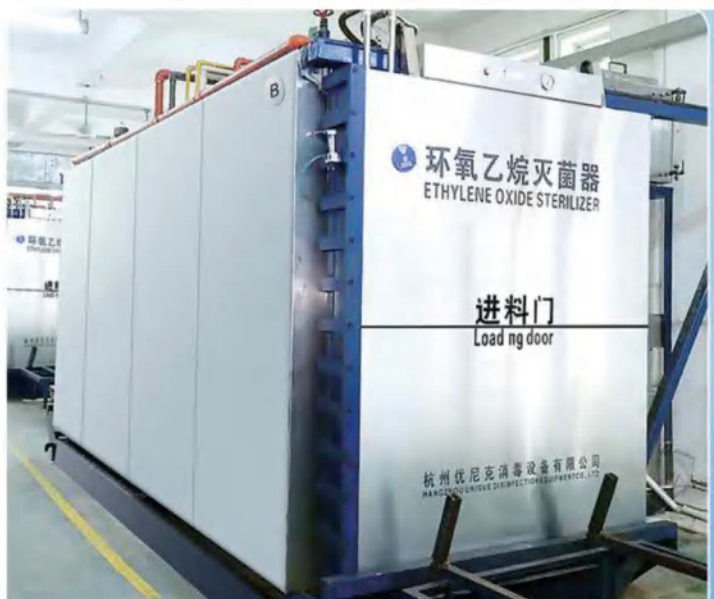
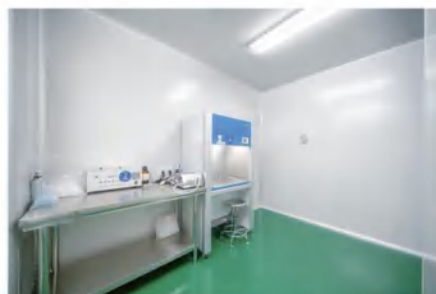
Currently we have

Class 100k Clean Workshops

Sterile Test Rooms

Positive Control Rooms

Microbial Limit Rooms



COVID-19

GLOBAL SALES EXCEED 700 MILLION MASKS

PRODUCTION CAPACITY
4 MILLION PIECES / DAY



DISPOSABLE MEDICAL FACE MASK

CE EN 14683:2019 TYPE I

Bacterial filtration efficiency (BFE) $\geq 95\%$

Differential pressure $< 40 \text{ Pa/cm}^2$

Microbial cleanliness $\leq 30 \text{ CFU/g}$



40x1 PCS



Red



Blue



x1

17.5 x 9.5 cm ($\pm 5\%$)

Model: TNK-KZ



x40

23 x 10.5 cm

Environmental-friendly PE Bag
1 mask / bag



x40

10.1 x 13.5 x 21.5 cm

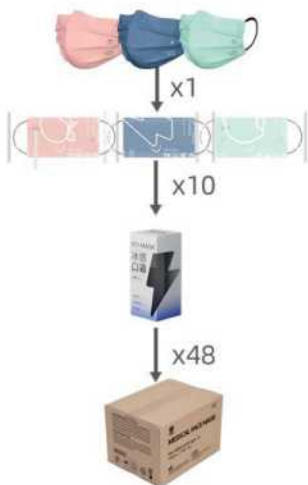
Carboard Box
40 masks / box



69.5 x 44 x 48 cm

Carton
1600 masks / carton
N.W.: 12.3 KG
G.W.: 14 KG

3 PLY DISPOSABLE SCENTED MASK



17.5 x 9.5 cm ($\pm 5\%$)

23 x 10.5 cm

10.5 x 9 x 21.5 cm

57 x 44.5 x 45 cm

Model: TNK-KZ(Scented)

Environmental-friendly PE Bag
1 mask / bag

Carboard Box
30 masks / box

Carton
1440 masks / carton
N.W.: 9.5 KG
G.W.: 11 KG

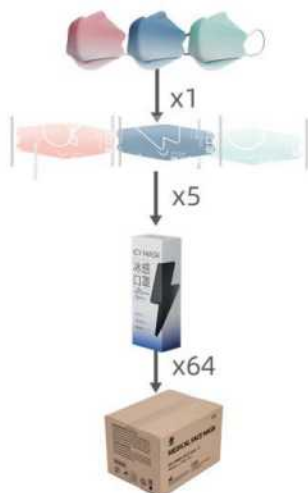


30 x1 PCS
(10 PCS each)



15 x1 PCS
(5 PCS each)

FISH SHAPE SCENTED MASK GB 2626-2019



20 x 8 cm ($\pm 5\%$)

23 x 10.5 cm

9.5 x 6 x 24 cm

52 x 40.5 x 50 cm

Model: YX95-TK03 (Scented)

Environmental-friendly PE Bag
1 mask / bag

Carboard Box
15 masks / box (5 PCS each)

960 masks / carton
N.W.: 8.5 KG
G.W.: 10 KG

DISPOSABLE MEDICAL FACE MASK

CE EN 14683:2019 TYPE I

Bacterial filtration efficiency (BFE) $\geq 95\%$

Differential pressure $< 40 \text{ Pa/cm}^2$

Microbial cleanliness $\leq 30 \text{ CFU/g}$



MORANDI



Gray



Pink



Orange



Yellow



Green



Blue

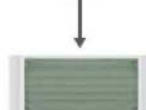


50x1 PCS



17.5 x 9.5 cm ($\pm 5\%$)

Model: TNK-KZ



x1

23 x 10.5 cm

Environmental-friendly PE Bag
1 mask / bag



x50

10.1 x 13.5 x 21.5 cm

Carboard Box
50 masks / box



x40

69.5 x 44 x 48 cm

Carton
2000 masks / carton
N.W.: 12.6 KG
G.W.: 14.4 KG



3 PLY MEDICAL FACE MASK

CE EN 14683:2019 TYPE I

Bacterial filtration efficiency (BFE) \geq 95%

Differential pressure $<$ 40 Pa/cm²

Microbial cleanliness \leq 30 CFU/g



GRADIENT



Pink Gradient
Orange Gradient
Red Gradient
Blue Gradient



Purple Gradient
Green Gradient
Yellow Gradient



40x1 PCS



13 + 14 + 13 = 40x1 PCS



17.5 x 9.5 cm (\pm 5%)

Model: TNK-KZ

x1

23 x 10.5 cm

Environmental-friendly PE Bag
1 mask / bag

x40

10.1 x 13.5 x 21.5 cm

Carboard Box
40 masks / box

x40

69.5 x 42.5 x 47 cm

Carton
1600 masks / carton
N.W.: 12.3 KG
G.W.: 14 KG

DISPOSABLE MEDICAL FACE MASK

CE EN 14683:2019 TYPE I

Bacterial filtration efficiency (BFE) $\geq 95\%$
 Differential pressure $< 40 \text{ Pa/cm}^2$
 Microbial cleanliness $\leq 30 \text{ CFU/g}$



Dog
 5 x10 PCS (Kid)
 4 x10 PCS (Adult)



Cat
 5 x10 PCS (Kid)
 4 x10 PCS (Adult)

FOR KID



14 x 8 cm ($\pm 5\%$)

Model: TNK-KZ

x10

11 x 19.5 cm

Environmental-friendly PE Bag
 1 mask / bag

x5

17.8 x 10.5 x 9.5 cm

Carboard Box
 50 masks / box

x60

56.5 x 45 x 51 cm

Carton
 3000 masks / carton
 N.W.: 9.2 KG
 G.W.: 10.7 KG

FOR ADULT



17.5 x 9.5 cm ($\pm 5\%$)

Model: TNK-KZ

x10

23 x 12 cm

Environmental-friendly PE Bag
 1 mask / bag

x4

21.5 x 13.5 x 10.1 cm

Carboard Box
 40 masks / box

x40

69.5 x 42.5 x 47 cm

Carton
 1600 masks / carton
 N.W.: 11.4 KG
 G.W.: 13 KG

3D PROTECTIVE FILTER FACE MASK (FISH-TYPE)

GB 2626-2019

Filtration efficiency (NaCl particles) $\geq 95\%$
Total inward leakage (TIL) $< 11\%$, $< 8\%$
Total inhalation resistance ≤ 350 Pa
Total exhalation resistance ≤ 250 Pa
CO₂ clearance requirement $\leq 1\%$



Khaki



Ivory



Navy



Green



White



50x1
PCS



x1

20 x 8 cm ($\pm 5\%$)

Model: YX95-TK02



x50

23.5 x 9 cm

Environmental-friendly PE Bag
1 mask / bag



x24

24.5 x 9.5 x 18 cm

Carboard Box
50 masks / box



59 X 38 X 51.5 cm

Carton
1200 masks / carton
N.W.: 9.2 KG
G.W.: 10.7 KG

3D STENT FOR SEPARATION OF MOUTH AND NOSE & ANTI-STRAIN EAR STRAPS



DISPOSABLE MEDICAL FACE MASK

CE EN 14683:2019 TYPE I

Bacterial filtration efficiency (BFE) $\geq 95\%$
 Differential pressure $< 40 \text{ Pa/cm}^2$
 Microbial cleanliness $\leq 30 \text{ CFU/g}$

5x10
PCS



Blue



Pink



Black



x10



x5



x60



17.5 x 9.5 cm ($\pm 5\%$)

13.0 x 23.0 cm

20.5 x 12.0 x 8.8 cm

63.5 x 50.5 x 49.5 cm

Model: TNK-KZ

Environmental-friendly PE Bag
10 masks / bag

Carboard Box
50 masks / box

Carton
3000 masks / carton
N.W.: 9.0 KG
G.W.: 15.1 KG

MEDICAL FACE MASK

CE EN 14683:2019 TYPE II

Bacterial filtration efficiency (BFE) $\geq 98\%$
Differential pressure $< 40 \text{ Pa/cm}^2$
Microbial cleanliness $\leq 30 \text{ CFU/g}$



5x10
PCS



x10



x5



x60



17.5 x 9.5 cm ($\pm 5\%$)

Model: TNK-KZ

13.0 x 23.0 cm

Environmental-friendly PE Bag
10 masks / bag

20.5 x 12.0 x 8.8 cm

Carboard Box
50 masks / box

63.5 x 50.5 x 49.5 cm

Carton
3000 masks / carton

MEDICAL SURGICAL MASK (EAR-LOOP)

CE EN 14683:2019 TYPE IIR

Bacterial filtration efficiency (BFE) $\geq 98\%$
Differential pressure $< 60 \text{ Pa/cm}^2$
Splash resistance pressure $\geq 16,0 \text{ kPa}$
Microbial cleanliness $\leq 30 \text{ CFU/g}$



5x10
PCS



x10



x5



x60



17.5 x 9.5 cm ($\pm 5\%$)

Model: TNK-WKA

13.0 x 23.0 cm

Environmental-friendly PE Bag
10 masks / bag

20.5 x 12.0 x 8.8 cm

Carboard Box
50 masks / box

63.5 x 50.5 x 49.5 cm

Carton
3000 masks / carton
N.W.: 9.8 KG
G.W.: 16 KG

MEDICAL SURGICAL MASK (EAR-LOOP)

FDA ASTM F2100-19 L3

Bacterial filtration efficiency (BFE) ≥ 99%
 Differential pressure < 60 Pa/cm²
 Splash resistance pressure ≥16,0 kPa
 Microbial cleanliness ≤ 30 CFU/g



5x10
PCS



17.5 x 9.5 cm (±5%)

Model: TNK-WKA

13.0 x 23.0 cm

Environmental-friendly PE Bag
10 masks / bag

20.5 x 12.0 x 8.8 cm

Carboard Box
50 masks / box

63.5 x 50.5 x 49.5 cm

Carton
3000 masks / carton
N.W.: 9.8 KG
G.W.: 16 KG

MEDICAL SURGICAL MASK (SIZE S)

CE EN 14683:2019 TYPE IIR

Bacterial filtration efficiency (BFE) ≥ 98%
 Differential pressure < 60 Pa/cm²
 Splash resistance pressure ≥16,0 kPa
 Microbial cleanliness ≤ 30 CFU/g



5x10
PCS



14 x 8 cm (±5%)

Model: TNK-WKA

11.5 x 19.5 cm

Environmental-friendly PE Bag
10 masks / bag

18 x 11 x 8 cm

Carboard Box
50 masks / box

57 x 47 x 43.5 cm

Carton
3000 masks / carton
N.W.: 7.7 KG
G.W.: 12.7 KG

MEDICAL SURGICAL MASK (TIE-ON)

CE EN 14683:2019 TYPE IIR

Bacterial filtration efficiency (BFE) $\geq 98\%$
 Differential pressure $< 60 \text{ Pa/cm}^2$
 Splash resistance pressure $\geq 16,0 \text{ kPa}$
 Microbial cleanliness $\leq 30 \text{ CFU/g}$



15x2
PCS



17.5 x 9.5 cm ($\pm 5\%$)

Model : TNK-WKB

22 x 12.5 cm

Environmental-friendly PE Bag
2 masks / bag

21 x 12 x 8.5 cm

Carboard Box
30 masks / box

63 x 43.5 x 46 cm

Carton
1500 masks / carton
N.W.: 5.5 KG
G.W.: 12.5 KG

KN95 PROTECTIVE MASK

GB 2626-2019

Filtration efficiency (NaCl particles) $\geq 95\%$
 Total inward leakage (TIL) $< 11\%$, $< 8\%$
 Total inhalation resistance $\leq 350 \text{ Pa}$
 Total exhalation resistance $\leq 250 \text{ Pa}$
 CO_2 clearance requirement $\leq 1\%$



Five-layer filtration



20x1
PCS



10.5 x 15.5 cm ($\pm 5\%$)

Model: KN95-TK01

14.0 x 16.0 cm

Environmental-friendly PE Bag
1 mask / bag

17 x 12.5 x 14.0 cm

Carboard Box
20 masks / box

59 x 36 x 52 cm

Carton
640 masks / carton
N.W.: 3.4 KG
G.W.: 8.3 KG

PARTICLE FILTERING HALF MASK

CE 2797 EN 149:2001+A1:2009 FFP2 NR

Total filtration efficiency $\geq 94\%$

Sodium chloride test $\leq 6\%$

Paraffin oil test $\leq 6\%$

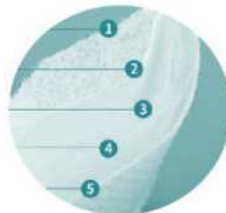
Total inward leakage $< 11\%$, $< 8\%$

Carbon dioxide content of the inhalation air $\leq 1\%$



10.5 x 15.5 cm ($\pm 5\%$)

Model: TNK-FHP204



Five-layer filtration



M-shaped sponge strip



S-shaped adjusting hood

PACKAGING 1



14.0 x 16.0 cm

Environmental-friendly / Bag
1 mask / bag

12x1
PCS

17 x 12.5 x 14.0 cm

Carboard Box
12 masks / box

59.5 x 36.5 x 53.5 cm

Carton
384 masks / carton
N.W.: 2.6 KG
G.W.: 6.8 KG



PACKAGING 2



10.5 x 20 cm

Environmental-friendly / Bag
1 mask / bag

6x1
PCS

17.5 x 23 cm

Environmental-friendly PE Bag
6 masks / bag

58 x 51 x 58 cm

Carton
1260 masks / carton
N.W.: 11 KG
G.W.: 12.7 KG



DISINFECTING WET WIPES

GB/T 27728-2011, WS 575



Alcohol-free
Passed skin irritation detection



PACKAGING 1



200 × 180 mm

Model: BZ2101

x80

18 × 10 × 6 cm

Bag
80 pcs / bag

x12

41 × 23 × 23.5 cm

Carton
960 pcs / Carton
N.W.: 8.6KG
G.W.: 9KG

PACKAGING 2



180 × 140 mm

Model: BZ2102

x10

15.5 × 9 × 1.5 cm

Bag
10 pcs / small bag

x10

17 × 13.5 × 8 cm

Bag
100 pcs / middle bag

x18

38 × 36 × 27.5 cm

Carton
1800 pcs / carton
N.W.: 11.8KG
G.W.: 12.6KG

PACKAGING 3



180 × 160 mm

Model: BZ2103

7 × 12.5 cm

Small bag
1 pc / small bag

8 × 17.7 × 3 cm

Middle bag
10 small bag / middle bag

8×17.7×30 cm

Big bag
10 middle bag / big bag

42×33×23.5 cm

Carton
1200 pcs / carton
N.W.: 11.8KG
G.W.: 12.5KG

EDI PURE WATER WIPES

GB/T 27728

7 times of deep purification



180 × 130 mm

Model: CS2101

19.5 × 9.5 × 6 cm

Bag
80 pcs / bag

33 × 22 × 19.5 cm

Carton
960 pcs / Carton
N.W.: 5.9KG
G.W.: 6.2KG

WET TOILET WIPES

GB/T 27728-2011, WS 575



200 × 150 mm

Model: SC2101

18 × 10 × 6 cm

Bag
40 pcs / bag

35 × 32 × 21 cm

Carton
1200 pcs / Carton
N.W.: 7.2 KG
G.W.: 7.7 KG

HERBAL INTIMATE WET WIPES

GB/T 27728-2011, WS 575



180 × 160 mm

Model: BZ2107

7 × 12.5 cm

Small bag
1 pc / small bag

8 × 17.7 × 3 cm

Middle bag
10 small bag / middle bag

8 × 17.7 × 30 cm

Big bag
10 middle bag / big bag

43 × 33 × 23.5 cm

Carton
1200 pcs / carton
N.W.: 6.5 KG
G.W.: 7.1 KG

COTTON SWAB

ROUND & POINTED HEAD



L:7.5 cm Φ:0.5cm

Model: TK001

H:8.5 cm Φ:7 cm

Box
180 pcs / box

45×31×46 cm

Carton
21600 pcs / Carton
N.W.: 11.3 KG
G.W.: 12.1 KG

MEDICAL COTTON SWAB

(STERILE)



L:10 cm Φ:0.7cm

Model: XMQ

11.5 x 17.5 cm

Bag
50 pcs / bag

49 x 41 x 54.5 cm

Carton
3000 pcs / Carton
N.W.: 15 KG
G.W.: 16.7 KG

DISPOSABLE ALCOHOL COTTON PAD



6 × 3 cm

Model: TEK-QCJA

10.5 x 5.5 x 3.5 cm

Box
50 pcs / box

44 x 36 x 28 cm

Carton
10000 pcs / Carton
N.W.: 11KG
G.W.: 11.8KG

***YOUR HEALTH
OUR CONCERN***



**GUANGDONG TAIENKANG PHARMACEUTICAL CO.,LTD.
SHANTOU T&K MEDICAL EQUIPMENT FACTORY CO.,LTD.**

STOCK CODE: 301263

Email: sales@tnkfun.com

Tel: +86(0)754 8992 3979

Fax: +86(0)754 8992 3723

No.8, Wanji South Second Street, North Taishan Road,

Longhu District, Shantou City, Guangdong Province, P.R.China

Web: www.tai-kang.com.en P.C.: 515065

