

4G Asset GPS Tracker



Model: LCA12

The LCA12 is specially designed for asset tracking, trailer tracking and container tracking. Its powerful magnetic back cover allows for rapid, flexible and low-cost installation, adding a waterproof case IP68 ensure the product remains reliable when installed in harsh environments. Built-in 3.6V 5400mah replaceable non-rechargeable ultra-high capacity battery, the product works up to 4 years. 5 working modes fits all the usage scenarios easily without power wasting.

APPLICATION SCENARIOS



Outdoor Operation Machines

Outdoor operation machines' location and working duration, time, status always counts for operation expenses. They are not designed with full electric features and costly to install a wired GPS Tracker. LCA12 provides with 5 working modes, easily meets moving, static, operating status monitoring, therefore management team no need to stay outdoor to supervise or communicate with operators all the time.

Lots of valuable gadgets are stock outdoor or indoor temporarily and might not be flexible to deploy whole monitoring system in time, adding a LCA12 on these gadgets takes a few minutes only but lower huge monitoring work and potential costs of loss. Smart working Mode 21 and Mode 23 keeps the battery longer working time but in-time alarms for managers.



Asset Pallets



Renting Cars/Mortgage Cars

Renting cars or mortgage cars, due to the ownership consideration, most of them can't be installed a wired GPS tracker, while its location and safety fasten the manager's nerve every minute. With LCA12's 3 year working duration device, easy to hide and anti-tamper alert keeps device work silently, even fully accomplished the renting or mortgage contract.

Containers travels all over the world, ocean and land, they stay moving or static status for long time, or being transported by ships, trailers or hangers. LCA12 helps remove the worries or online monitoring job via camera. A LCA12 on container performs as a Policeman too, if there any thief tried to carry away the container or open it, LCA12 alarms you in time.



Outdoor Static Stations

5 WORKING MODES



Mode 1
Clock Type



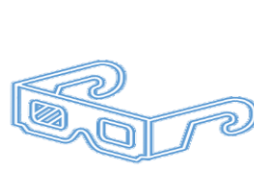
Mode 2
Cycle Mode



Mode 3
Tracking Mode

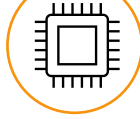


Mode 21
Smart Clock Type



Mode 23
Smart Cycle Type

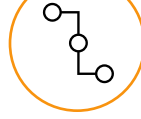
MAIN FEATURES



Advanced chipset



Accurate location



Multiple modes



Replaceable battery



4G
LTE Connectivity



Battery Operated



Wifi Positioning



OTA Updates



Powerful magnet



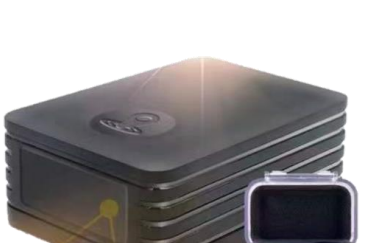
Low battery alarm



IP68 waterproof



Ultra-long standby



5 MODES, SMART POWER SAVING

Ultra long standby, moving, static, periodical and combines

5400MAH REPLACEABLE NON-RECHARGEABLE BATTERY

>4 years(one position per day)

WATERPROOF FIXING CASE

IP68 and screw holes to fix on trailer or trucks, avoid removing, suitable for various scenes usage

MAGNETIC, NO INSTALLATION NEEDED(OPTIONAL)

Non-slip silicon gel and powerful magnetic, just place and go

ANTI-TAMPER ALERT

Built-in sensitive light sensor, real-time alert if being removed