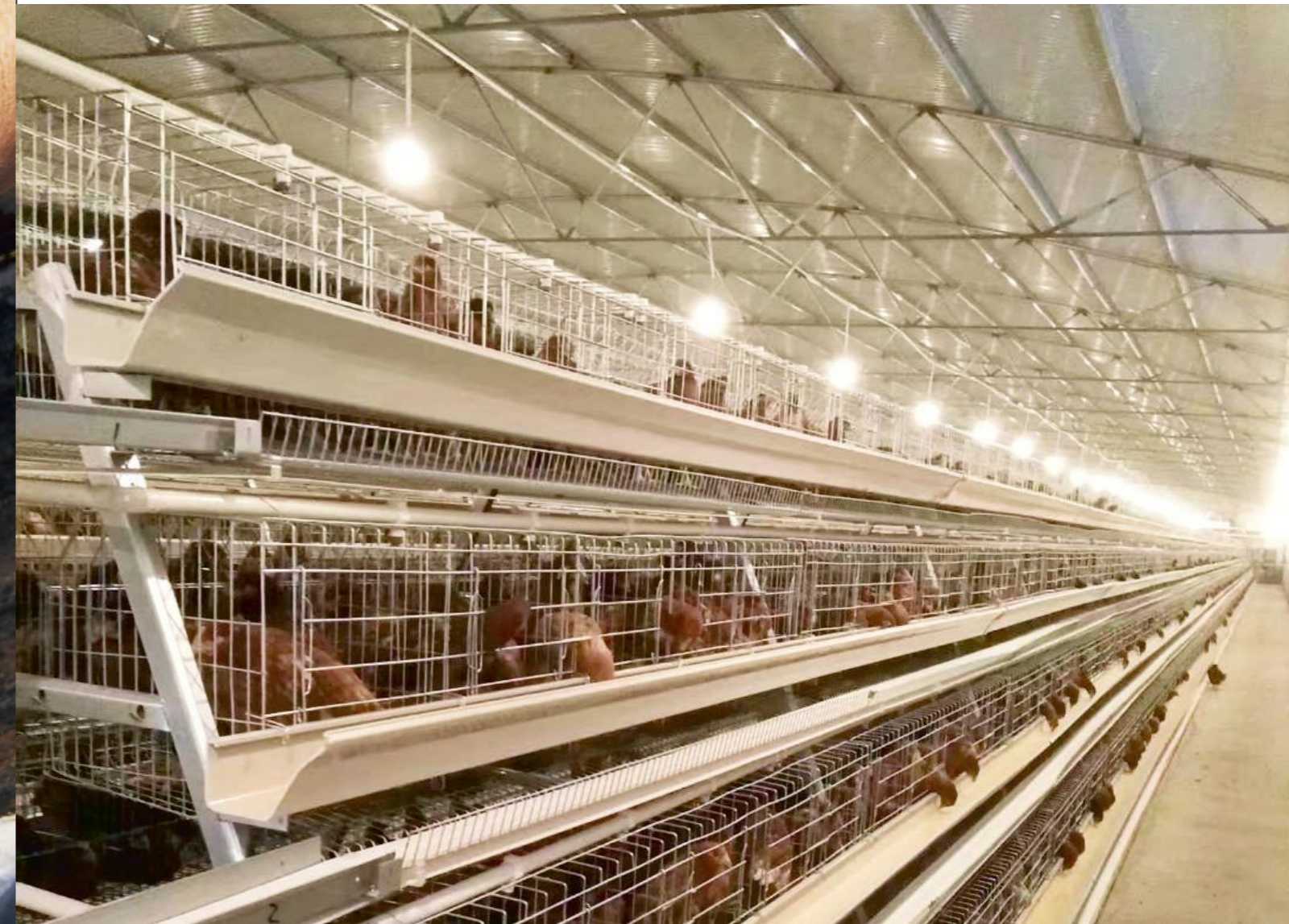




LAYER CAGE

FOR COMMERCIAL EGGS

A TYPE CHICKEN CAGE
H TYPE CHICKEN CAGE

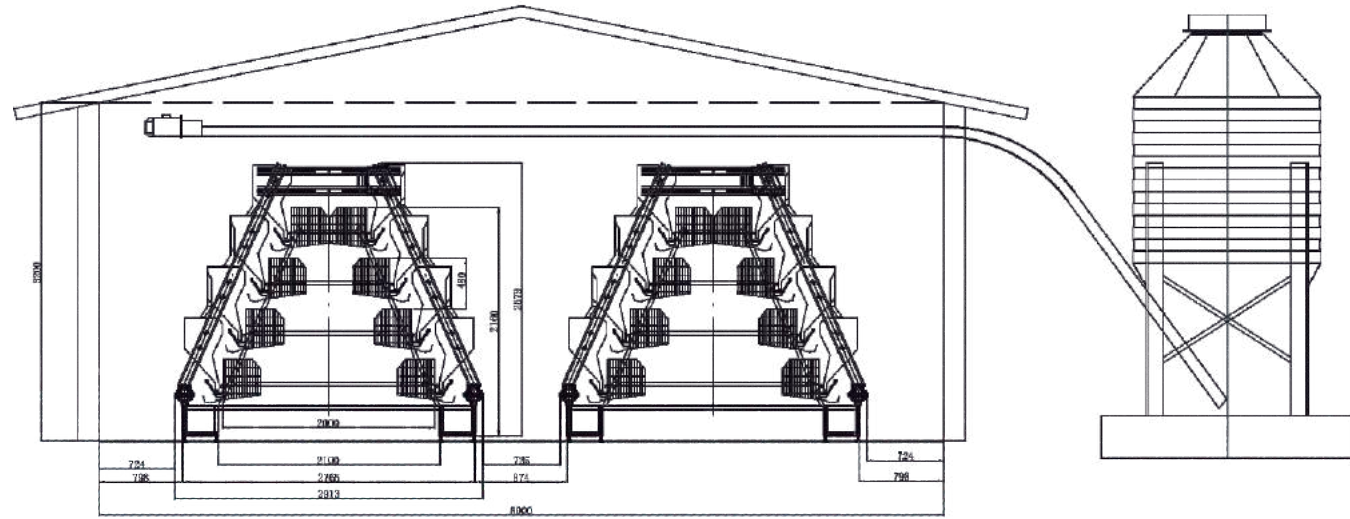


PRODUCT INTRODUCTION:

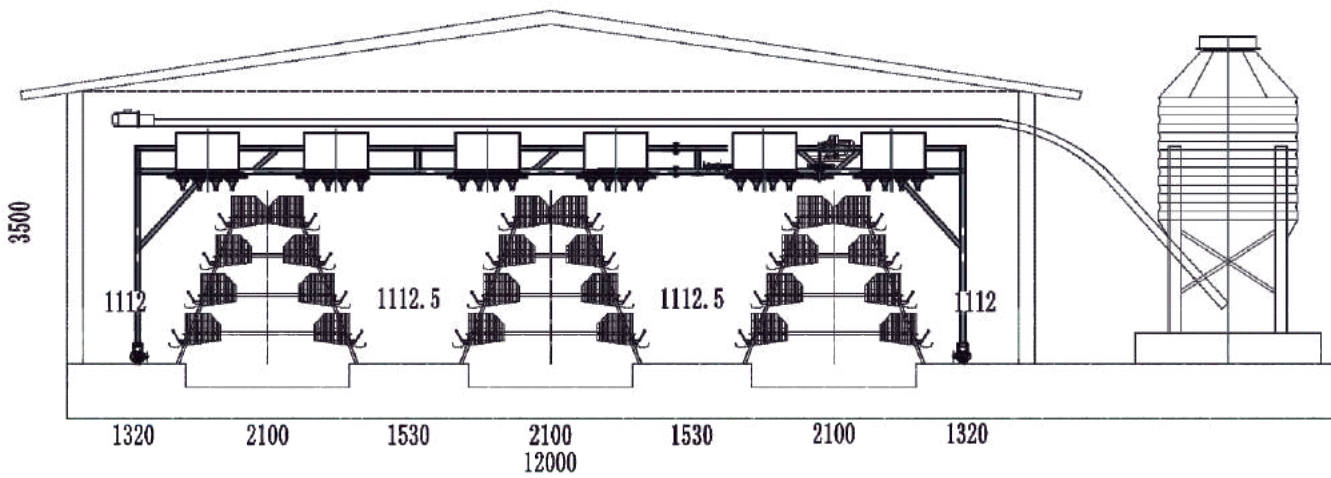
A type layer chicken cage is mainly used for layer birds above 60 days, A type is the most basic equipment for layer birds, it including the water system, can be equipped with auto feeding system, auto egg collection system and auto manure removing system, reduce the human labor greatly.

FEATURES:

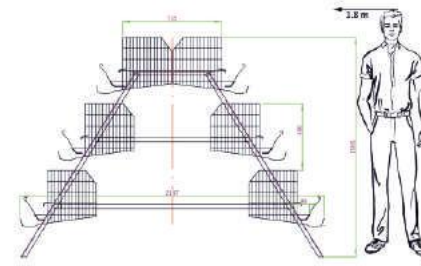
1. It is adopted hot-dip galvanizing material with Q235 material, prove the wire mesh from rusting, can be used for 15-20 years;
2. Make full use of the up space, reduce land resources and the shed construction;
3. Fully auto system can reduce human labor invest, increase profit;
4. More durable material can lasting for longer using life.



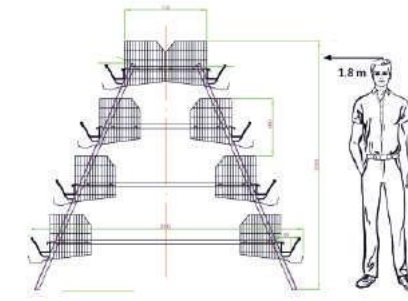
A Type Cage with Ladder Feeding System



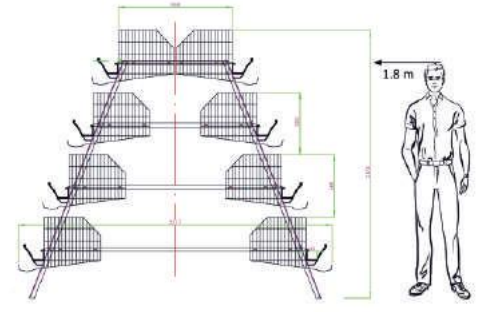
A Type Cage with Gantry Feeding System



90/96 CAGE



120/128 CAGE



160 CAGE

MODEL	TIER	DOOR	BIRD/CAGE (PCS)	SPACE/BIRD (Cm2)	CAGE SIZE (MM)
A-90	3	5	3	455	1950*350*380
A-96	3	4	4	426.5	1950*350*380
A-120	4	5	3	455	1950*350*380
A-128	4	4	4	426.5	1950*350*380
A-160	4	5	4	438.75	1950*450*410

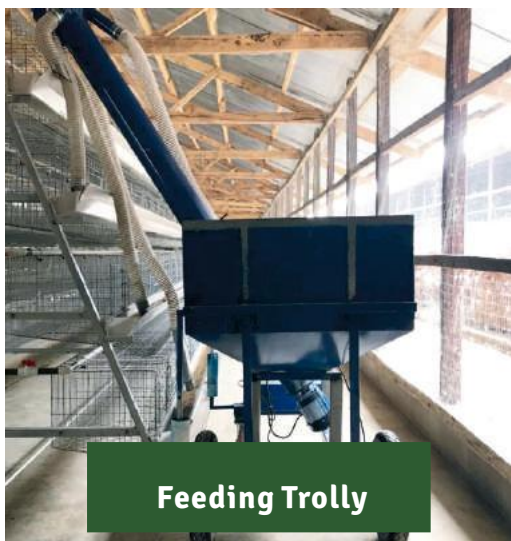


**Part of our projects
at customer site**

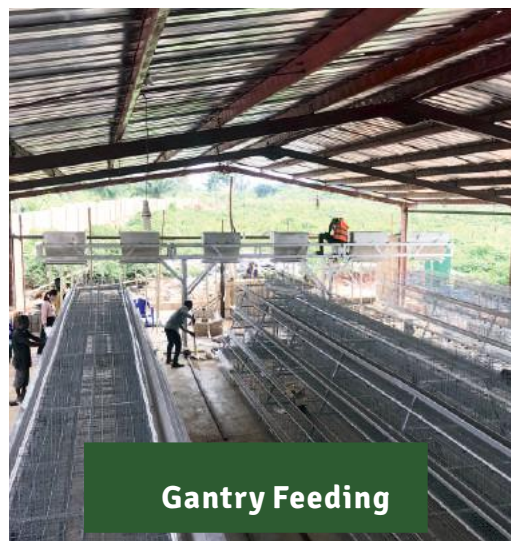
A type mostly used for open type shed



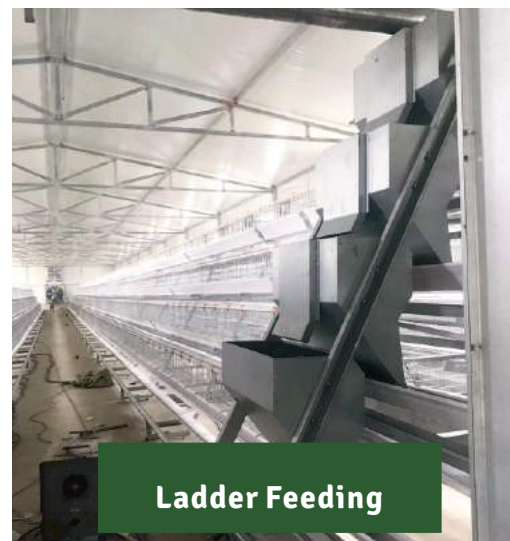
APPLICATION



Feeding Trolley



Gantry Feeding



Ladder Feeding