



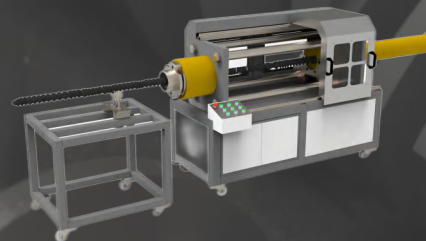
TWIN-SCREW EXTRUDER EXPERTS



TWIN-SCREW EXTRUDER
SCREWS BARRELS SHAFTS



WEAR-RESISTANT SOLUTIONS
PROCLAD TECHNOLOGY



MAINTAINANCE EUIPMENT
MEASUREMENT DISASSEMBLING CLEANING

Jiangmen PromaXX Extrusion Technology Co.,Ltd.

CONTENTS



01 ABOUT US

02 PRODUCTS & SERVICE

03 WEAR RESISTANT SOLUTIONS

04 OUR PARTNERS

PromaXX

ABOUT US

- **We** are Sino-German joint venture, Founded in 2015, adopted with German-style management and production technology.
- **PromaXX** is an expert in Twin-screw extruder spare parts manufacturing.
- **We** are capable of producing Screw elements, Barrels, Shafts and Accessories.
- **We** are also able to provide you professional Engineering design, process optimization, wear measurement, Screw cleaning and dismantling.
- **PromaXX** is your reliable total solution provider of Twin-screw extruder spare parts and service.
- **Business Covers:**
Manufacturing of wear resistant screw elements, barrels, shafts and accessories.
Providing maintenance and trouble-shooting of twin-screw extruders.
- **Management System:**
ISO9001: 2015 Quality Management System
TQM, 6S Management standardization

Key Member



150 Total Employees,
20 Engineering Team,
12 QA & QC Team
10 Sales Team
15 Customer Service Team



OUR TEAM



TEAM

Promaxx

PROMAXX STRENGTH



SINO-GERMAN JOINT VENTURE

RICH EXPERIENCE IN EXTRUDER BRANDS

EXCELLENT WEAR-RESISTANT SOLUTIONS

MAIN FEATURES

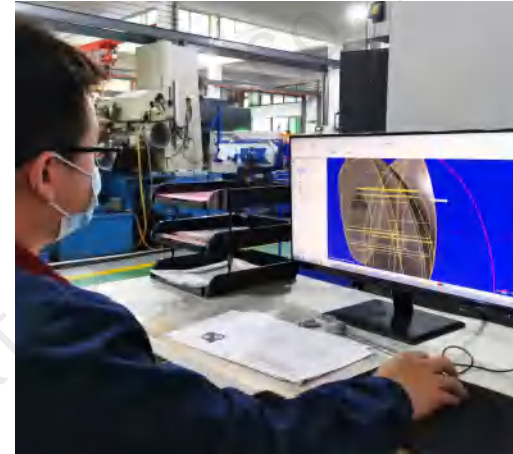
Engineering Abilities:

Multiple types of parts database with global parts information

Expert-level engineering design;

Simulation software with professional threaded component design;

Combination optimization capabilities



Extruder spare parts we can supply:

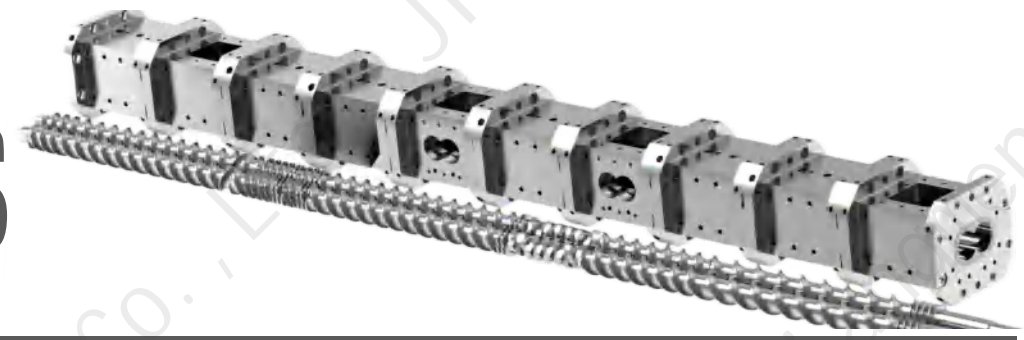
Coperion, Leistritz, Kraussmaffei, Thysohn, Marris

JSW, Toshiba, Kobe Steel, Ikegai, Unee Plus

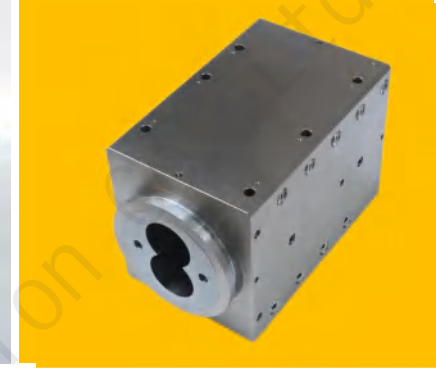
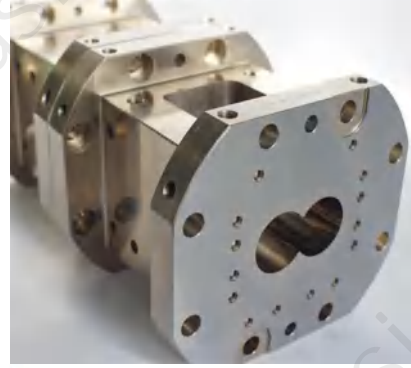
Wenger, Clextral, Bühler, BUSS, etc.

Main Products

Twin-screw



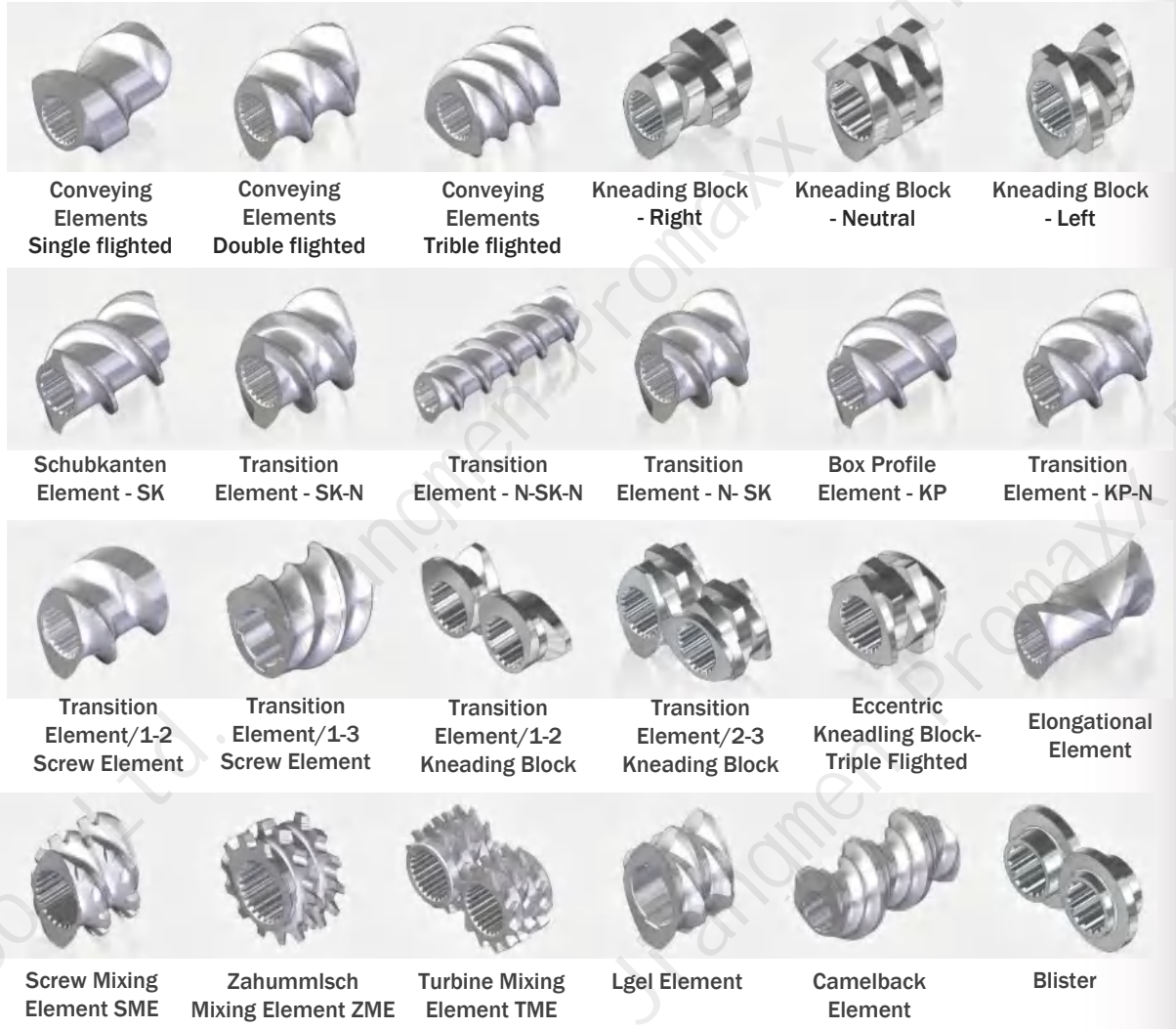
**Extruder
Screws**



**Extruder
Barrels**

PRODUCT GALLERY

Screw Elements



Shafts & Accessories



Screw Elements

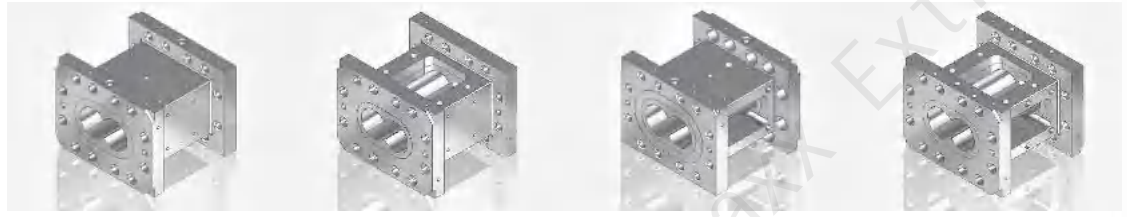
- ▶ O.D: Ø10-Ø350mm
- ▶ Brands: Coperion, Leistritz, Kraussmaffei, JSW, Toshiba, Kobe Steel, Ikegai, Wenger, Cletral, Bühler, BUSS
- ▶ Steel grades: tool steels, PM steels, stainless steels

Shafts

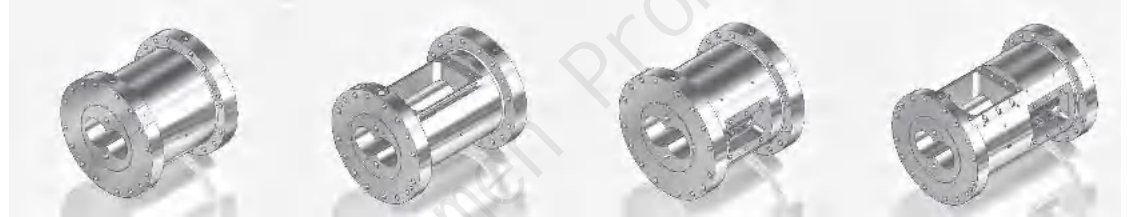
- ▶ Outside diameter range: Ø10-Ø120mm
- ▶ Length: <8 meter
- ▶ Spline profiles:
 - DIN5480、JIS-B-1603、GB3478 involutes spline
 - Hexagon
 - Half-round key slot
- ▶ Steel grades: high torque steels

PRODUCT GALLERY

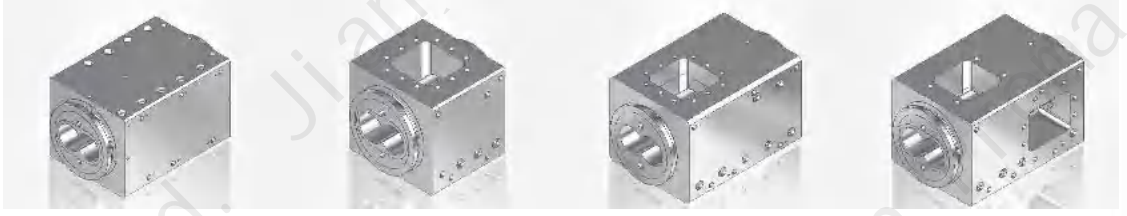
Barrels



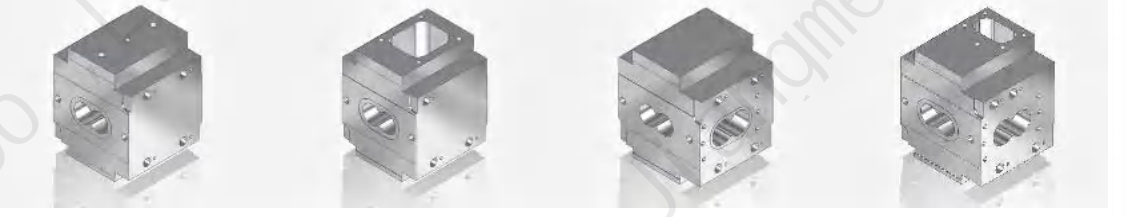
Closed Barrel Top Open Barrel Side Open Barrel Combi Barrel



Closed Barrel Top Open Barrel Side Open Barrel Combi Barrel

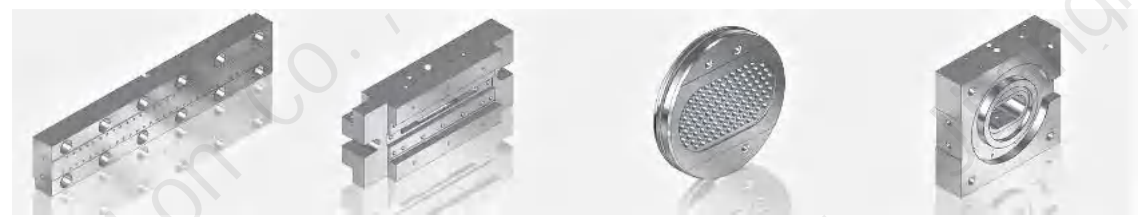


Closed Barrel Top Open Barrel Top Open Barrel Combi Barrel

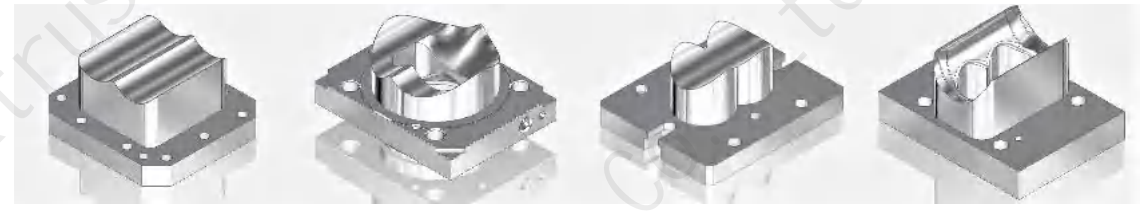


Closed Barrel Top Open Barrel Side Open Barrel Combi Barrel

Plugs & Die Plates



Die Plate Die Head Breaker Plate Die Adapter



Closed Plug Vent Plug Side Feeder Plug Sider Feeder Adapter

Barrels

- ▶ Inner diameter range: Ø12-Ø250mm
- ▶ Extruder Brands: Coperion, Leistritz, Kraussmaffeil, JSW, Toshiba, Kobe Steel, Ikegai, Wenger, Clextral, Bühle
- ▶ Categories: closed, feed, degassing, side-feeding, combi

Accessories

- ▶ Degassing, vacuum and side-feeder plugs
- ▶ Extrusion die plates
- ▶ Couplings, screw tips
- ▶ Side-feeder barrels and screws

SERVICE

- **Barrel inner bore measurement**

- ✓ On-line measurement without disassembling barrels
- ✓ I.D range: Ø40-Ø350mm
- ✓ Accuracy of measurement: 0.02mm
- ✓ Simple and compact



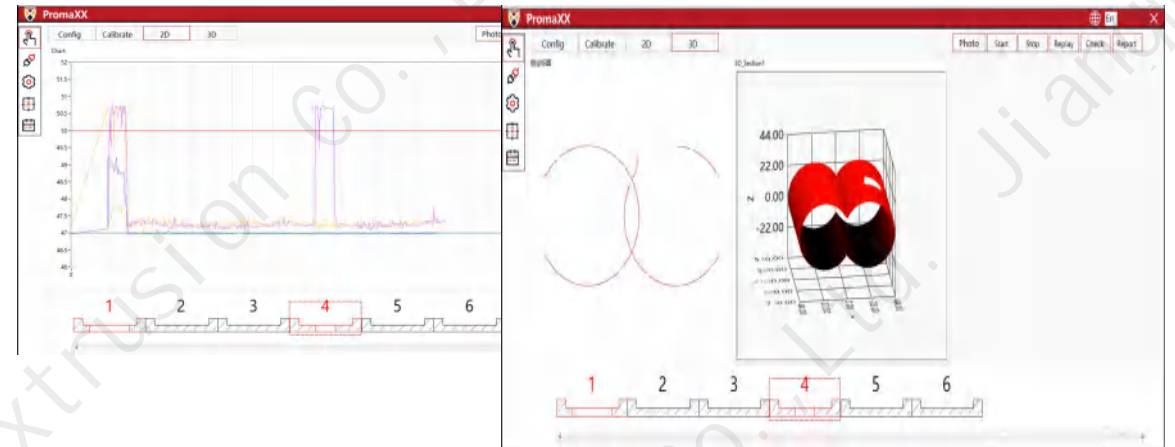
- **Barrel inner bore measurement**

- ✓ Export reports of measurement
- ✓ Visual inspection of inner bore



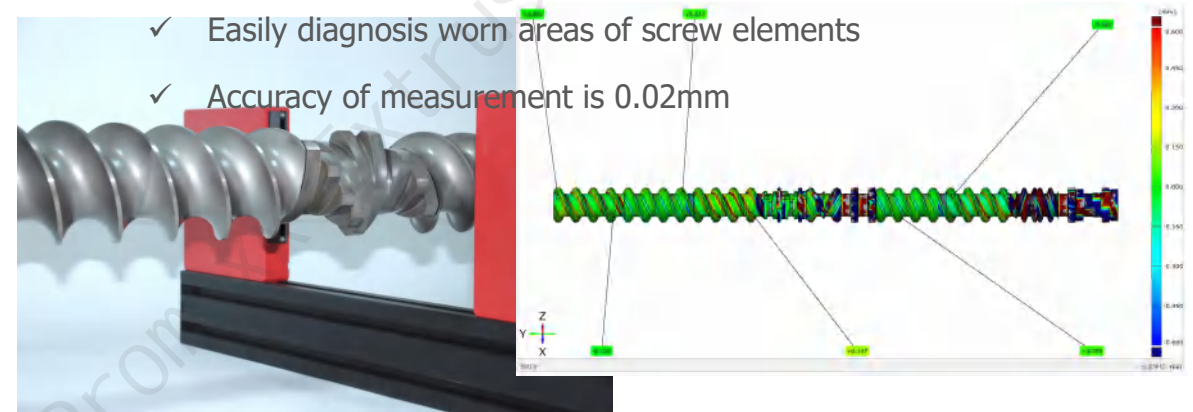
- **Barrel inner bore measurement**

- ✓ Convenient and friendly user interface, professional diagnosis reports



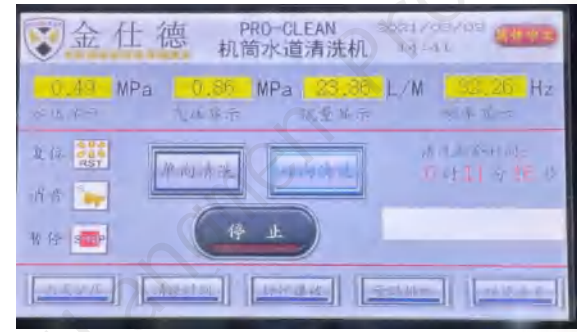
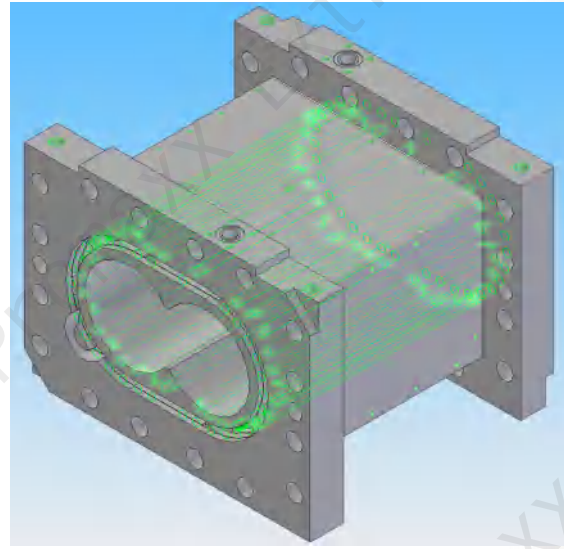
- **Screw elements wear measurement**

- ✓ Online measurement without disassembling screw elements
- ✓ Generate screw configuration diagram and wear reports
- ✓ Easily diagnosis worn areas of screw elements
- ✓ Accuracy of measurement is 0.02mm



SERVICE

- **Cooling channels cleaning**
 - ✓ Inspection of leakage,volumn and flow rate
 - ✓ Clean cooling channels without damaging barrels



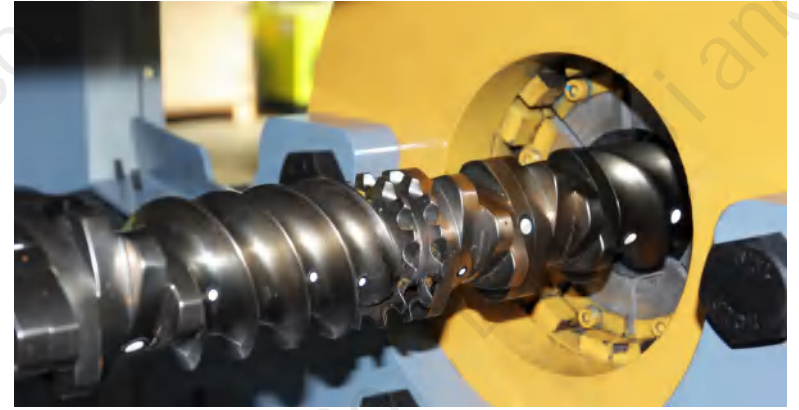
- **Cooling channels cleaning**
 - ✓ Improve heat exchange efficiency
 - ✓ Improve temperature control accuracy



SERVICE

- **Screw elements disassembling:**

- ✓ Semi-automatic disassembling
- ✓ High efficient and safety
- ✓ No more mouldings and jigs
- ✓ Simple and compact
- ✓ Range of O.D: Ø30-Ø200mm



- **Barrel inner bore cleaning:**

- ✓ Changeable cleaning head
- ✓ Clean 8-bore simultaneously
- ✓ Safe, easy and efficient

WEAR-RESISTANT SOLUTIONS

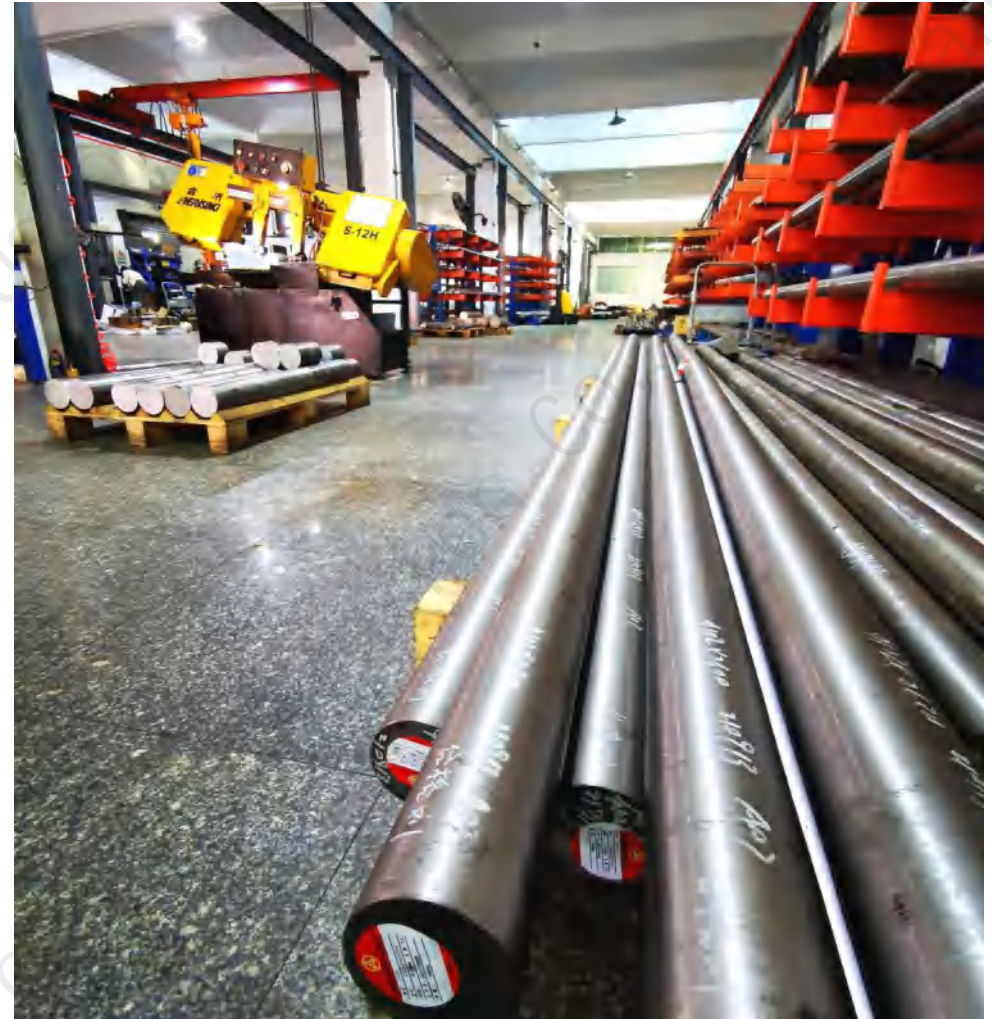
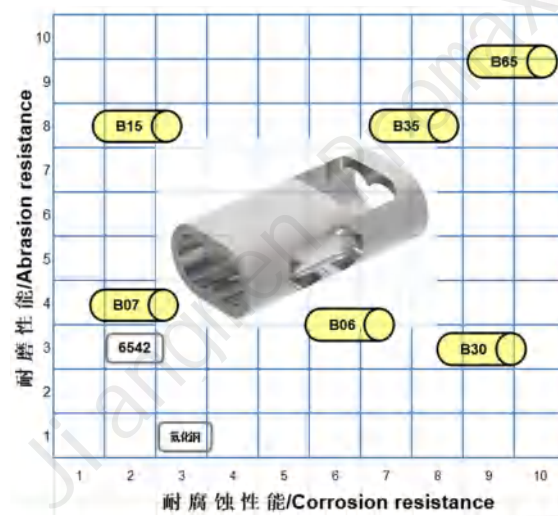
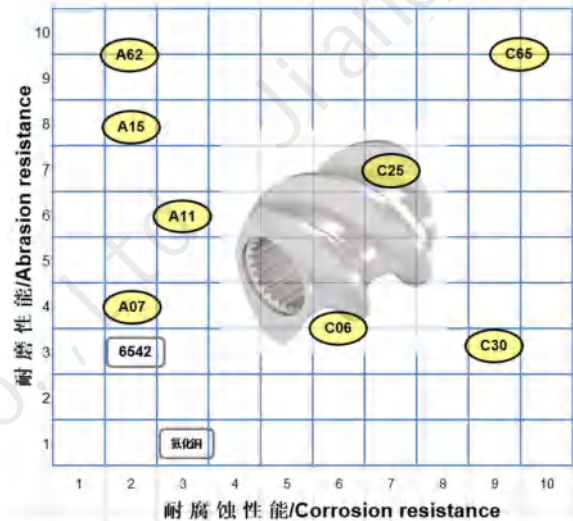
➤ European steel grades:

- Cold-working tool steels, martensite stainless steels
- PM-HIP tool steels, HSS
- Ni-based alloys, Co-based alloys

➤ IQC of raw material:

- Chemical analysis
- Microstructure inspection
- Material certificate
- Certificate of Origin

➤ Professional heat treatment



WEAR-RESISTANT SOLUTIONS

PROCLAD Tip-welding technology

➤ Base material:

Stainless steel, Hastelloy, Inconel

➤ Tip-welding material:

Stellite, Colmonoy

➤ Performance:

Excellent corrosive resistance

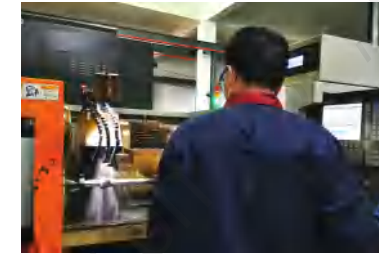
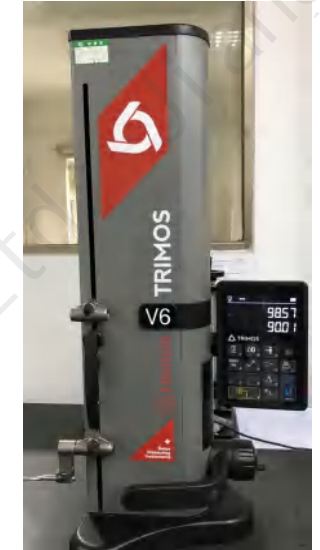
Improved abrasive resistant performance

Thickness of tip-welding layer $\geq 3\text{mm}$



PROCESSING EQUIPMENT

EQUIPMENT	QTY
3D Coordinate Measurer	1
CNC Horizontal Milling Machine	2
4-axis CNC Milling Machine	8
CNC Milling Machine	8
CNC Lathe	6
CNC Screw Lathe	8
Conventional Lathe	2
CNC Flat Grinder	4
CNC Cylindrical Grinder	4
Wire EDM	16
Sink EDM	4
Broaching Machine	1
Honing Machine	2
Laser Making Machine	2



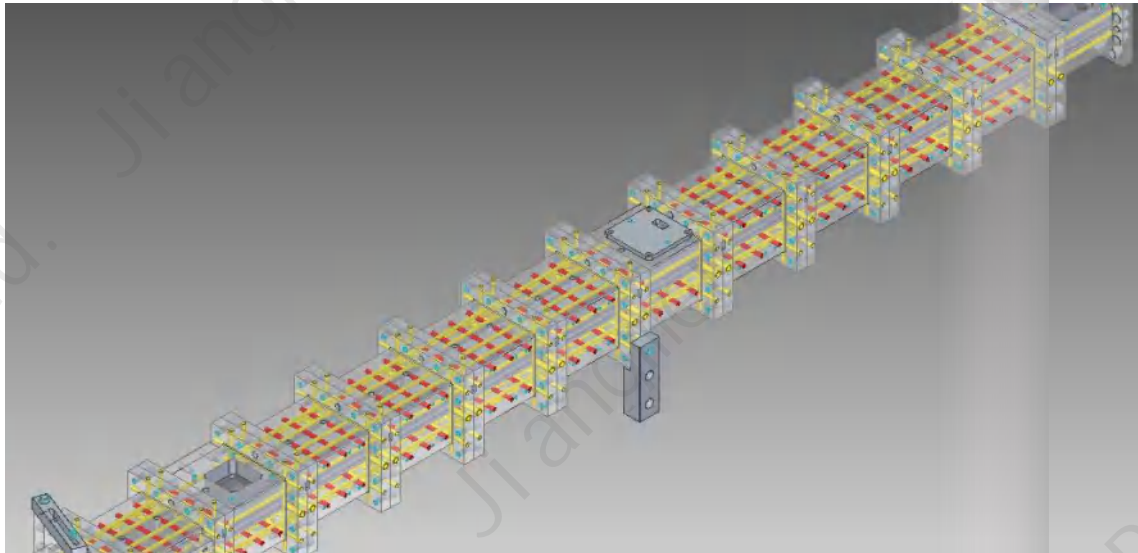
Project Case

Equipment modification

Project Name: Transformation of CTE65 barrel to ZSE60-HP barrel

Application: Masterbatch industry

Purpose: To improve the heat exchange efficiency and temperature control accuracy of the barrel, and to improve the process and product quality



Modification content:

- 12-section barrel
- 2 blocking blocks
- Adapter plate
- Heating pipe (650W/piece)
- Waterway connector
- Wire box
- Three-way interface

CONTACT US

Jiangmen PromaXX Extrusion Technology Co.,Ltd.

Plant D Guifeng Road 329, Xinhui District, Jiangmen City,
PR China.

Tel: +86 750 6620869

Fax: +86 750 6620869

Email: cathy@promaxx-extrusion.com

Web: www.promaxx-extrusion.com

Online Shop:

cnjmpromaxx.en.alibaba.com

jmpreciso.en.made-in-china.com



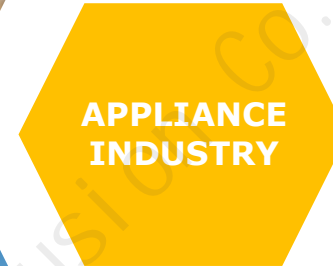
Plastic Extrusion



Plastic Tube Extrusion



Medical Processing



APPLIANCE
INDUSTRY



Chemical Processing



Wood Plastic Composite



Pet Food Extrusion