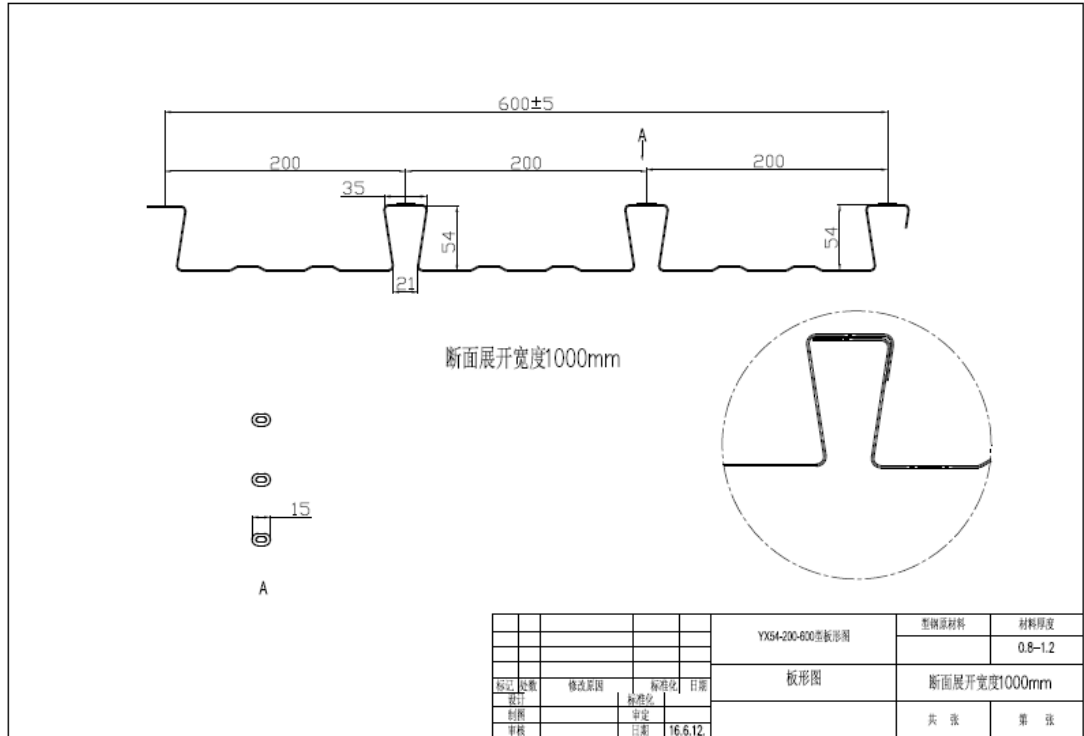


<http://www.superdamachine.com>

一、Item: YX54-200 Floor Deck Roll forming machine

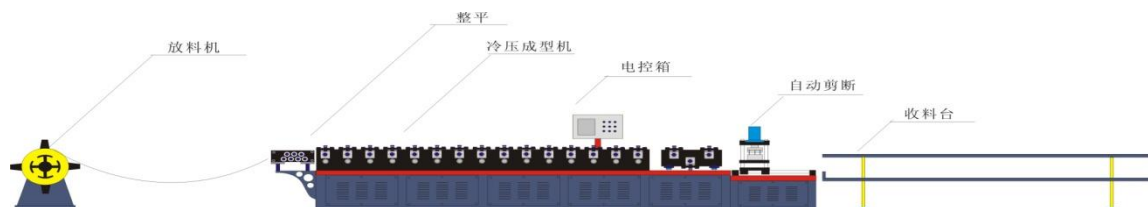
1、Derawing:



2、

Process

Decoiler---Guide device---Roll forming machine--- Hydraulic Cut (Including Knife)---Finished product rack



**Device:** Decoiler, Guide device, Main Roll forming machine, Hydrualic shear, Finished product rack, PLC control box, Hydrualic station, ect.

### 3、 Material:

Cold –strip steel、 Galvanized Sheet

Specification:  $\leq 600\text{mm}$ ;

Material strength:  $G \leq 245\text{Mpa}$

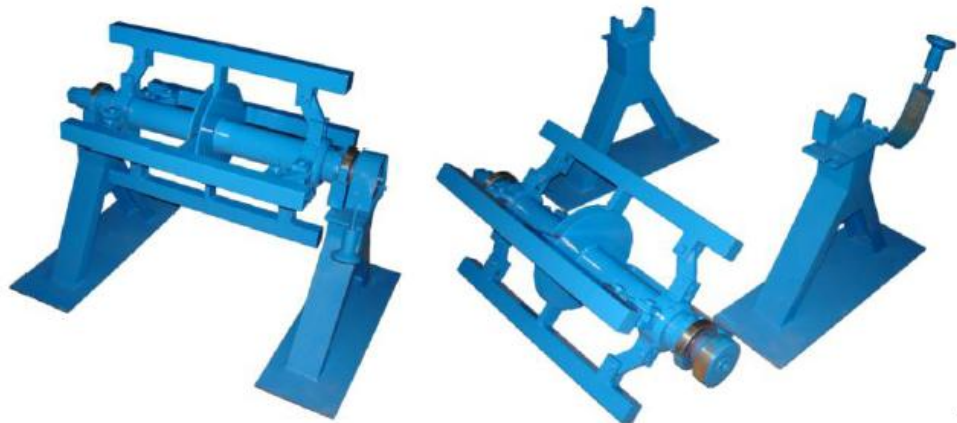
### 4、 Device:

#### ① . Decoiler:1 pcs

Not power

Inner diameter: 460-520 mm; Out diameter: Max.1200mm

Loading: Max. 5T; Max. width. 1000mm;



---供参考

#### ② . Main Roll forming machine

Side panel thickness: 18mm A3 steel;

Roller material: gCr15,HRC50~60;

Reel:  $\phi 95\text{mm}$ , 45# Steel;

Main Motor: 18.5KW

Q195/Q235/Q345 Cold –strip steel、 Galvanized Sheet

Total 24 pair rollers;

Speed: 10-12 m/min



---Photo just for reference

③. PLC Control Box: 1 PC

Automatic Control Quantity and length



--供参考

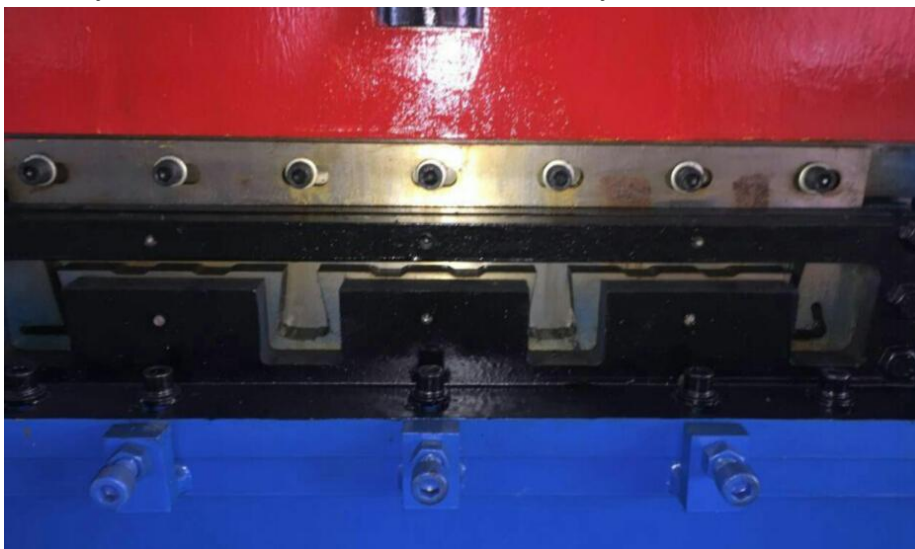
#### ④. Hydraulic station and Shear

4.1 Function: Hydraulic shear (Mould 1 set)

4.2 Shear knife materil, Cr12, Hardness HRC56-58

4.3 Hydraulic system working pressure: 16MPa

4.4 Hydraulic station: 5.5KW ( Hydraulic shear) -



--供参考

⑤ Finished product rack: 3 Pcs, not power

