

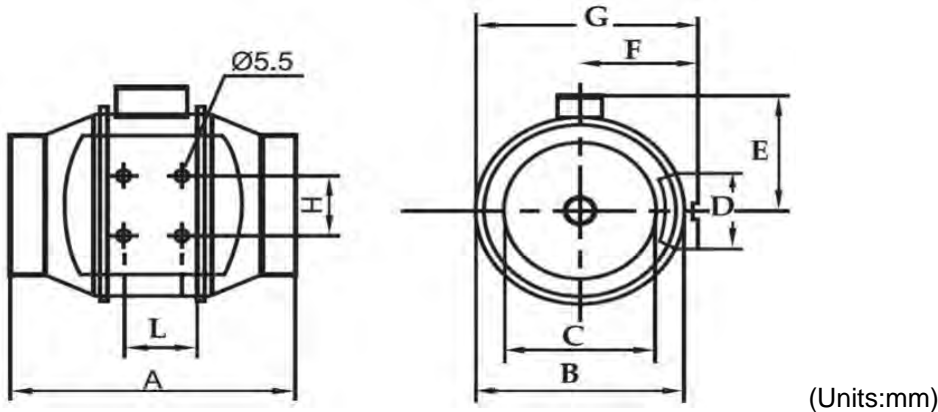


Parameters:

Type	Voltage	Frequency	Speed	Current	Power	Air Flow	Pressure	Noise	
	V	HZ	(r/min)	(A)		m3/h	(Pa)	(dB)	
SFP-100H(L)-2	220	50	High Speed	2500	0.16	35	295	170	30
			Low Speed	2150	0.12	27	225	135	26
SFP-125H(L)-2	220	50	High Speed	2500	0.2	45	350	170	30
			Low Speed	1850	0.16	31	285	140	26
SFP-150H(L)-2	220	50	High Speed	2500	0.27	58	650	260	32
			Low Speed	2070	0.22	46	520	220	28
SFP-200H(L)-2	220	50	High Speed	2450	0.54	120	1050	360	58
			Low Speed	1770	0.45	95	830	300	52
SFP-250H(L)-2	220	50	High Speed	2550	0.93	200	1300	520	58
			Low Speed	2200	0.83	175	1050	460	52
SFP-300H(L)-2	220	50	High Speed	2500	1.65	320	2900	630	65
			Low Speed	2250	1.35	280	2500	580	55

Dimensions:

Type	A	B	C	D	E	F	G	H	L	kg
SFP-100H(L)-2	303	170	98	80	115	100	188	60	80	1.6
SFP-125H(L)-2	303	170	123	80	115	100	188	60	80	1.6
SFP-150H(L)-2	320	200	158	130	127	112	212	60	80	3.2
SFP-200H(L)-2	320	220	198	140	141	124	232.5	94	100	4.3
SFP-250H(L)-2	385	272	248	168	192	155	291	140	145	8.5
SFP-300H(L)-2	450	336	312	210	224	188	356	178	182	13.0



Information:

Frame:

The frame is made of polypropylene plastic disposable forming, with function of high resistance to acid and alkali.

Impeller: ABS materials, the optimum air volume air pressure according to the fluid mechanics design.

Motor: two-speeds external motor, uses the import NSK ball, life can reach more than 50000 hours

Operation Temperature: -20 °C~+60 °C

Protecting Grade: IP44

Advantages of the fan:

- Nice design
- Low noise
- No vibration
- Long use-life