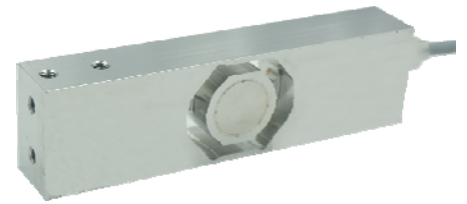
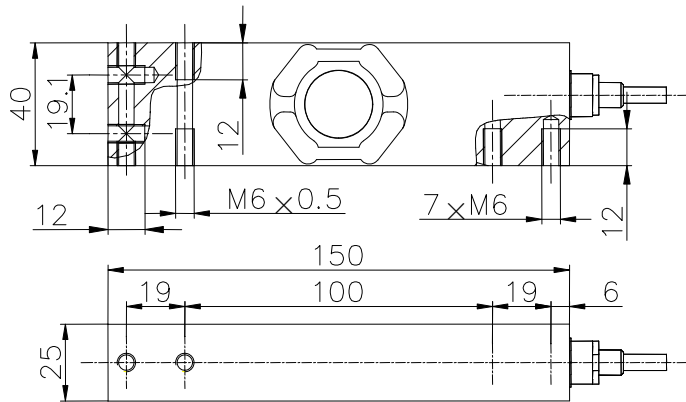


安装尺寸/Mounting Dimension

**B704**



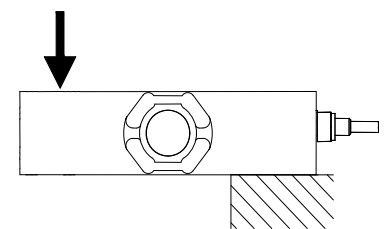
特点与用途/Features & Applications

- 不锈钢材质，稳定性强
- 适用于各种环境，IP68
- 主要用于食品医药行业等各种工业称重系统

- Made of Stainless Steel ,Strong stability
- Used in various automated stamping applications,IP68 protection
- Mainly used for Food and pharmaceutical industry and industrial measuring system

参数	Specifications	技术指标/Technique
额定容量	Capacity	10,20,50,100kg
精度等级	Accuracy class	C3
输出灵敏度	Rated output	2.0±10% <i>mV/V</i>
零点输出	Zero balance	±5%F.S.
非线性	Non-linearity	0.0166%F.S.
滞后	Hysteresis	0.0166%F.S.
重复性	Repeatability	0.018%F.S.
蠕变 (30min)	Creep(30min)	0.0166%F.S.
温度灵敏度漂移	Temp.effect on output	0.0175%F.S./10℃
零点温度漂移	Temp.effect on zero	0.0125%F.S./10℃
输入电阻	Input impedance	390±5Ω
输出电阻	Output impedance	350±5Ω
绝缘电阻	Insulation	≥5000MΩ/100VDC
激励电压	Recommended excitation	5V
最大激励电压	Maximum excitation	12V
温度补偿范围	Compensated temp range	-10~40℃
工作温度范围	Operation temp range	-10~50℃
安全超载	Safe overload	150%F.S.
极限超载	Ultimate overload	300%F.S.
电缆线尺寸	Cable size	Φ5.4×3000mm
单件重量	Weight approx.	0.5kg
材料	Material	Stainless Steel (不锈钢)
防护等级	IP Class	IP68
最大秤盘尺寸	Max.platform size	500mm×400mm

受力方式/Load Direction



配线图/Wiring Code

