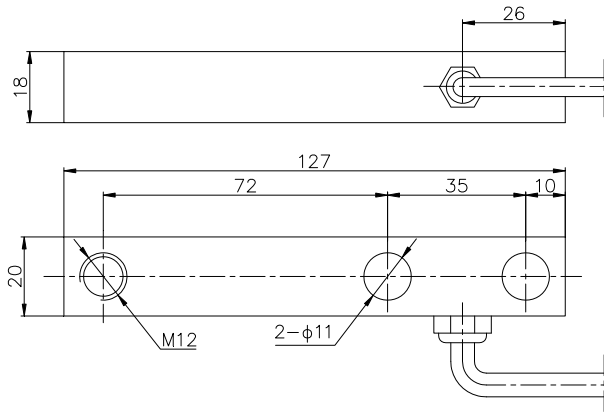


安装尺寸/Mounting Dimension

B703

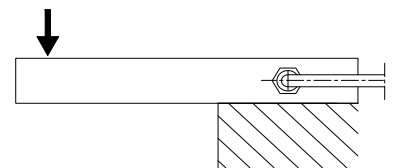


特点与用途/Features & Applications

- 稳定性强
- 适用于各种环境, IP68
- 主要用于地上衡, 包装秤, 各种工业称重系统等
- Strong stability
- Used in various automated stamping applications, IP68 protection
- Mainly used for packing scales, hopper scale and industrial measuring system

参数	Specifications	技术指标/Technique
额定容量	Capacity	100, 150, 200 kg
精度等级	Accuracy class	C3
输出灵敏度	Rated output	1.9±10% mV/V
零点输出	Zero balance	±2% F.S.
非线性	Non-linearity	0.02% F.S.
滞后	Hysteresis	0.02% F.S.
重复性	Repeatability	0.03% F.S.
蠕变 (30min)	Creep (30min)	0.02% F.S.
温度灵敏度漂移	Temp. effect on output	0.02% F.S./10°C
零点温度漂移	Temp. effect on zero	0.02% F.S./10°C
输入电阻	Input impedance	390 ± 10Ω
输出电阻	Output impedance	350 ± 5Ω
绝缘电阻	Insulation	≥5000MΩ/100VDC
激励电压	Recommended excitation	10V
最大激励电压	Maximum excitation	15V
温度补偿范围	Compensated temp range	-10~60°C
工作温度范围	Operation temp range	-20~80°C
安全超载	Safe overload	150% F.S.
极限超载	Ultimate overload	300% F.S.
电缆线尺寸	Cable size	Φ5×1500mm
单件重量	Weight approx.	0.3kg
材料	Material	合金钢
防护等级	IP Class	IP66

受力方式/Load Direction



配线图/Wiring Code

