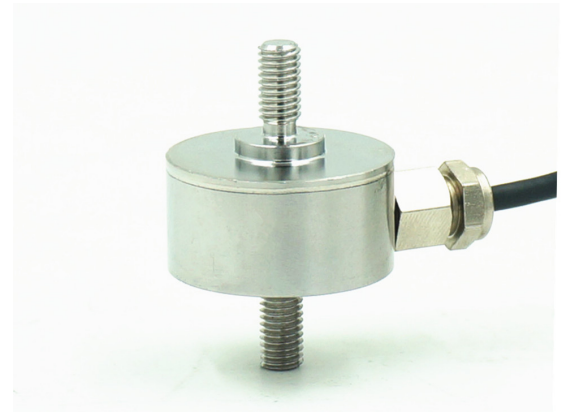
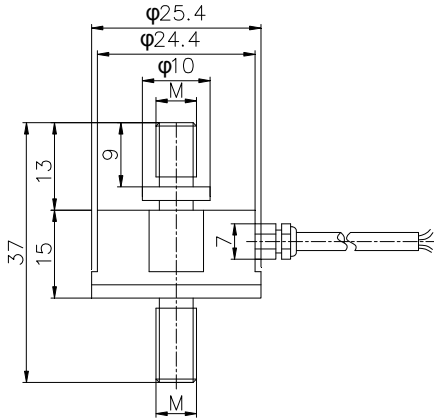


安装尺寸/Mounting Dimension

B303



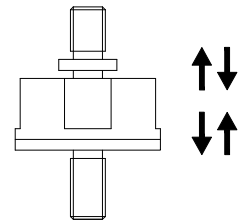
Capacity (N)	M	Weight Approx.
50~1000	M6	0.1kg
2000	M8	0.1kg

特点与用途/Features & Applications

- 高度低，变形量小
- 不锈钢材料
- 拉压双向
- 主要用于推、拉力计，料斗秤，各种工业称重系统等
- low profile , small deflection
- Made of stainless steel
- Tension and compression application
- Mainly used for pull and push dynamometer,hopper scale and industrial measuring system

参数	Specifications	技术指标/Technique
额定容量	Capacity	50,100,150,200,250,300N 500,1000,2000N
输出灵敏度	Rated output	2.0±10% mV/V
零点输出	Zero balance	±0.05 mV/V
非线性	Non-linearity	0.50%F.S.
滞后	Hysteresis	0.20%F.S.
重复性	Repeatability	0.20%F.S.
蠕变 (30min)	Creep(30min)	0.10%F.S.
温度灵敏度漂移	Temp.effect on output	0.05%F.S./10℃
零点温度漂移	Temp.effect on zero	0.05%F.S./10℃
输入电阻	Input impedance	800~1100Ω
输出电阻	Output impedance	800~1100Ω
绝缘电阻	Insulation	≥5000MΩ/100VDC
激励电压	Recommended excitation	10V
最大激励电压	Maximum excitation	15V
温度补偿范围	Compensated temp range	-10~60℃
工作温度范围	Operation temp range	-20~80℃
安全超载	Safe overload	150%F.S.
极限超载	Ultimate overload	200%F.S.
电缆线尺寸	Cable size	φ3×4000mm
材料	Material	Stainless Steel (不锈钢)
防护等级	IP Class	IP68

受力方式/Load Direction



配线图/Wiring Code

