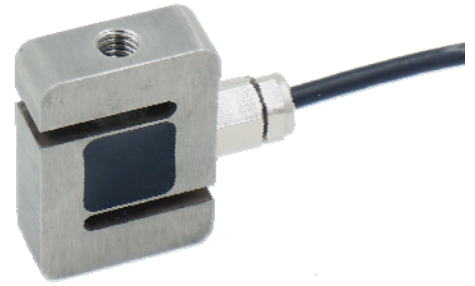
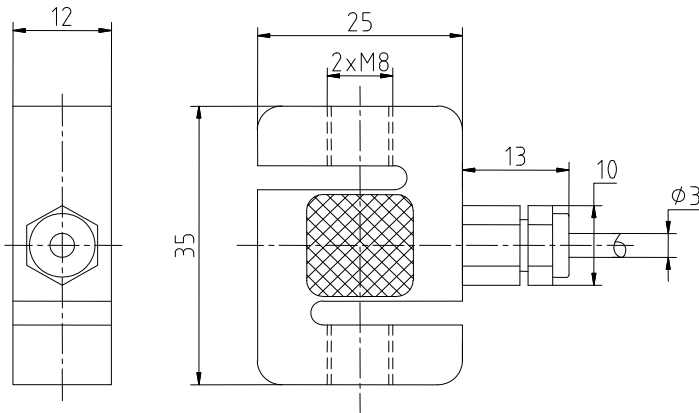


安装尺寸/Mounting Dimension

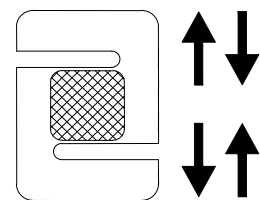
B318



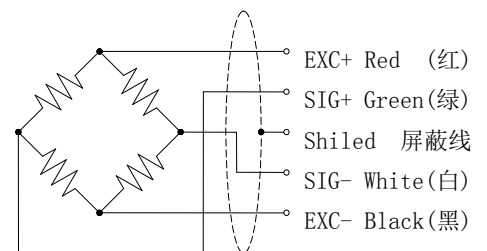
特点与用途/Features & Applications

- 高度低，变形量小
- 合金钢材料
- 拉压双向
- 主要用于推、拉力计，料斗秤，各种工业称重系统等
- low profile , small deflection
- Made of Alloy steel
- Tension and compression application
- Mainly used for pull and push dynamometer, hopper scale and industrial measuring system

受力方式/Load Direction



配线图/Wiring Code



参数	Specifications	技术指标/Technique
额定容量	Capacity	10,20,50,100,150,200,500N
输出灵敏度	Rated output	2.0±10% mV/V
零点输出	Zero balance	± 0.05 mV/V
非线性	Non-linearity	0.05%F.S.
滞后	Hysteresis	0.05%F.S.
重复性	Repeatability	0.05%F.S.
蠕变 (30min)	Creep(30min)	0.05%F.S.
温度灵敏度漂移	Temp.effect on output	0.025%F.S./10 $^{\circ}C$
零点温度漂移	Temp.effect on zero	0.025%F.S./10 $^{\circ}C$
输入电阻	Input impedance	385 ± 20 Ω
输出电阻	Output impedance	350 ± 10 Ω
绝缘电阻	Insulation	≥5000 $M\Omega/100VDC$
激励电压	Recommended excitation	5V
最大激励电压	Maximum excitation	15V
温度补偿范围	Compensated temp range	-10~60 $^{\circ}C$
工作温度范围	Operation temp range	-20~80 $^{\circ}C$
安全超载	Safe overload	150%F.S.
极限超载	Ultimate overload	200%F.S.
电缆线尺寸	Cable size	$\Phi 3 \times 4000mm$
单件重量	Weight approx.	0.1kg
材料	Material	Alloy Steel (合金钢)
防护等级	IP Class	IP66