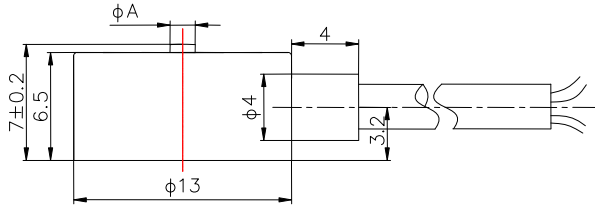


安装尺寸/Mounting Dimension

B108



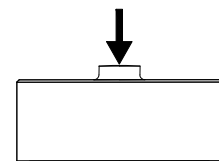
Capacity (N)	A
50,100,200	1.6
300,500,1000	2.3

参数	Specifications	技术指标/Technique
额定容量	Capacity	50,100,200,300,500,1000N
输出灵敏度	Rated output	1.5±15% <i>mV/V</i>
零点输出	Zero balance	±0.03 <i>mV/V</i>
非线性	Non-linearity	0.50% <i>F.S.</i>
滞后	Hysteresis	0.20% <i>F.S.</i>
重复性	Repeatability	0.20% <i>F.S.</i>
蠕变 (30min)	Creep(30min)	0.20% <i>F.S.</i>
温度灵敏度漂移	Temp.effect on output	0.05% <i>F.S./10°C</i>
零点温度漂移	Temp.effect on zero	0.05% <i>F.S./10°C</i>
输入电阻	Input impedance	800~1100Ω
输出电阻	Output impedance	800~1100Ω
绝缘电阻	Insulation	≥5000 <i>MΩ/100VDC</i>
激励电压	Recommended excitation	5 <i>V</i>
最大激励电压	Maximum excitation	10 <i>V</i>
温度补偿范围	Compensated temp range	-10~60°C
工作温度范围	Operation temp range	-20~80°C
安全超载	Safe overload	120% <i>F.S.</i>
极限超载	Ultimate overload	150% <i>F.S.</i>
电缆线尺寸	Cable size	φ2×4000 <i>mm</i>
单件重量	Weight approx.	0.1 <i>kg</i>
材料	Material	Stainless Steel (不锈钢)
防护等级	IP Class	IP66

特点与用途/Features & Applications

- 微型传感器，外形小巧
- 不锈钢材料
- 防护等级：IP66
- 适用于各种小空间的测力，广泛应用于工业、研发等领域的测量和控制
- Miniature load cell , Low profile
- Made of stainless steel
- IP66 protection
- Suitable for force measurement in limited spaces.Widely used for industrial measurement and control , R&D and other applications

受力方式/Load Direction



配线图/Wiring Code

