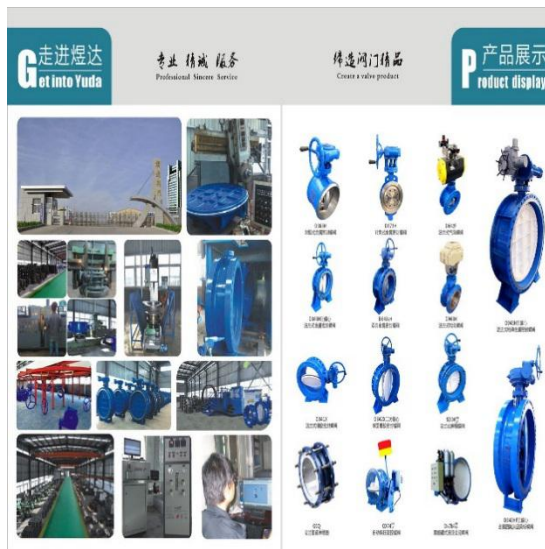


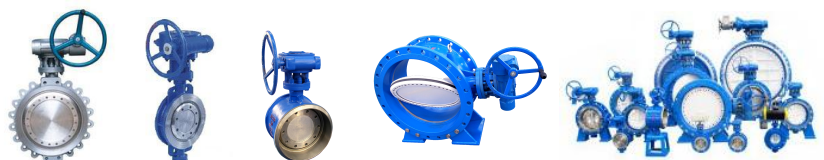
Company Introduction

Name	Henan Yuda Valve Manufacturing Co., Ltd
Commodity	Butterfly Valve
Located	Ruzhou, China
Output	More than 15 million USD / One year
Area size	133,500 square meters
Certificates	ISO 9001:2008 / CE / TS(2741094-2018)
Subsidiary	Henan Yuxing Casting Co., Ltd
Nature	Manufacturing with self-exporting
Cell phone	+86-13621381736
Address	Industrial Zone in Ruzhou Yuda Industrial Park
E-mail	Fangruixin123@126.com
Website	http://www.henanyuda.com http://yudabutterflyvalve.en.alibaba.com



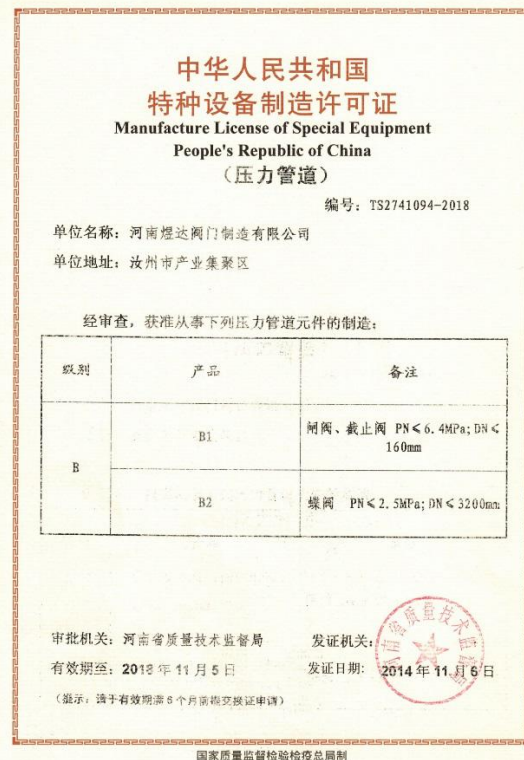
Excellence to create

Pursuit of perfection



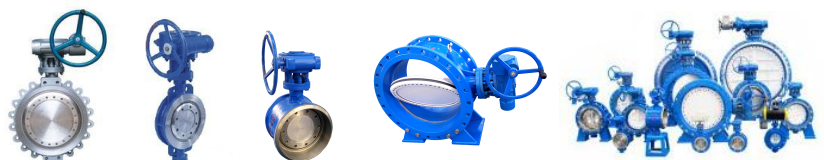
Mainly productions

Bilateral metal hardware sealed butterfly valve
Bidirectional rubber-seated sealing rubber, PTFE-seated butterfly valve
Triple eccentric butterfly valve
Double eccentric butterfly valve
Ventilation butterfly valve
Worm wheel Operated Flanged Flexible butterfly valve
The line with rubber butterfly valve
Connection: Wafer, flange, lug, welding



Excellence to create

Pursuit of perfection



Detailed description

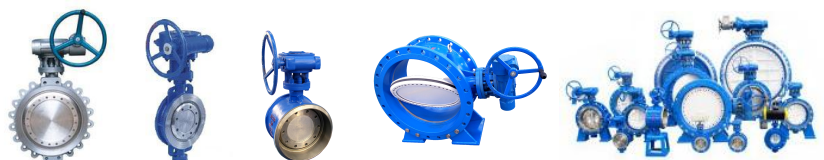
Diameter	DN40 ~ DN3200 / 2' ~ 128'
Pressure	0.1Mpa ~ 6.4Mpa / CL150 / CL300
Drive Mode	Handle – Turbine – Electric-Pneumatic- Hydraulic
Material	Cast iron / Ductile iron / Cast steel / Carbon steel / Stainless steel / Alloy steel
Body	WCB / WCC / LCB / QT450-10 / QT500-7 / CF8 / CF3 / CF8M / CF3M / WC6 / WC9
Disc	WCB / WCC / LCB / QT450-10 / QT500-7 / CF8 / CF3 / CF8M / CF3M / WC6 / WC9
Seat	304 / 316 / Graphite / Asbestos / PTFE / EPDM / NBR / Reinforce PTFE / Sealface 507 / Stellite

The Butterfly Valve Standard

Designed	API609/DIN3354/AWWA C504/ BS EN593
Face to Face	API609/ASME B16.10/AWWAC504/BS2080 /ISO5752/GB/T12221/EN558
Flange End	ASME B 16.5 / ASME B 16.47 / BS EN 1092 / ISO7005
Inspection Text	API 598/ BS EN 12266/ ISO 528
Application	petroleum, chemical industry, metallurgy, building materials, military industry and water-supply and drainage, heating, gas supply etc.

Excellence to create

Pursuit of perfection





Henan Yuda Valve Manufacturing Co., Ltd is an integrated enterprise who set design research and development of the middle and low pressure butterfly valves for both fluid control and adjustment and the manufacturing casting processing and seals of the special valve as a whole. The company has advanced production technology, complete product resources, strong capital strength, as the strong backup force of the supply for you.

Your satisfaction, Yuda's expectations; your expectation, Yuda's pursuit.

"To be honest man, to work seriously" is the spirit of enterprise.

Contact us

Felix Fang / International Dep. Manager

E-mail: fangruixin123@126.com

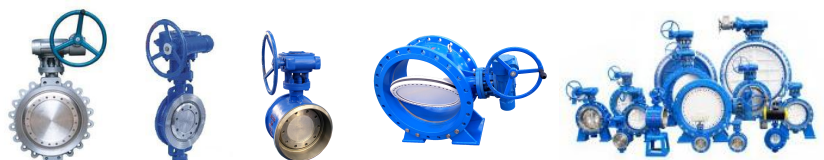
Skype: fangruixin123@126.com

[Tel:+86-13621381736](tel:+86-13621381736)

QQ: 544982347

Excellence to create

Pursuit of perfection

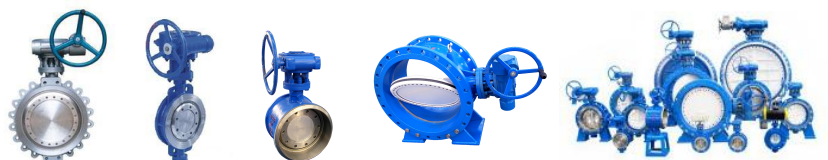


Company Partners

Company name	Country
	PFF Group / PFF LLC RUSSIA Russia
	ZIGGIOTTO & C.Sr Italy
	KevAli Trading South Africa South Africa
	GRP engineers & consultants, Ltd Pakistan
	BDR INDUSTRIAL SERVICES Egypt
	TERMOENERGETIKA armature Serbia
	GULF TECH. OIL FIELDS & GAS EQUIP. SUPPLY TR. LLC United Arab Emirates
	China Datang Corporation China
	China Huaneng Group China
	BILFINGER INTERVALVE (PTY) Ltd South Africa
	Al-Rushaid Group Saudi Arabia

Excellence to create

Pursuit of perfection



Actual Pictures



Factory gate



Production workshops



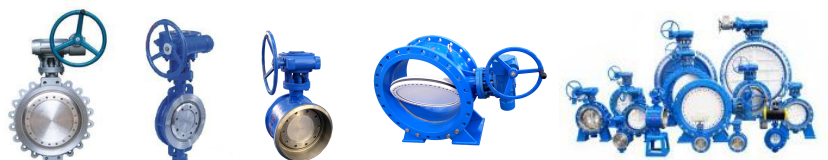
Internal workshops



Production equipment

Excellence to create

Pursuit of perfection





Design and Manufacturing per API609

Face to face per API609

Flange ends per ASME B16.5/ASME B16.47

Inspection and test per API598



Design and Manufacturing per BS EN593

Face to face per BS EN558

Flange ends per BS EN1092

Inspection and test per BS EN12266



Big size butterfly valve



Other products and export packaging

Excellence to create

Pursuit of perfection

