

Connector

I.D.C Socket Series

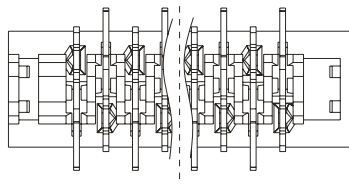
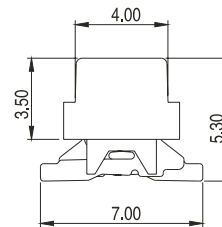
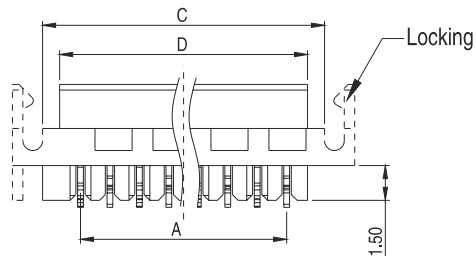
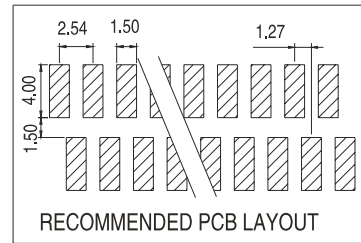
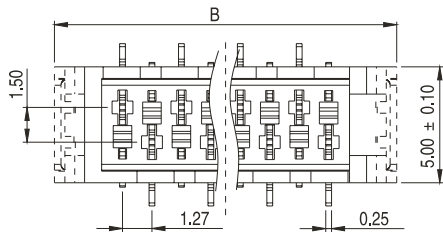
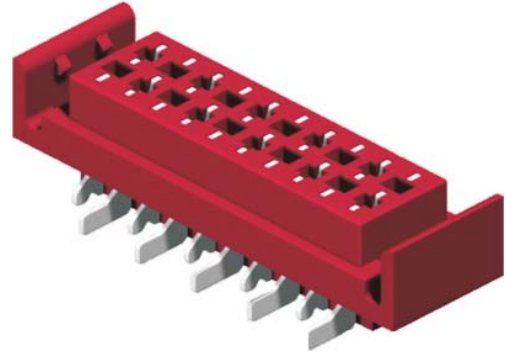
KLS1-204GE (1.27mm Micro-Match Connector,Socket,Female,SMT. With ear)

Material:

Housing: Thermoplastic Polyester UL94V-0
Contacts: Phosphor Bronze

Electrical Characteristics:

Current Rating: 1 AMP
Insulator Resistance: 1000M Ohm min. at DC 100V
Contact Resistance: 20m Ohm max.
Dielectric withstanding:AC 500V for 1 minute
Operating Temperature: -40°C~+105°C



Nr.Of contact	DIMENSIONS			
	A	B	C	D
04	3.81	9.70	7.10	5.60
06	6.35	12.20	9.70	8.14
08	8.89	14.70	12.20	10.68
10	11.43	17.30	14.70	13.22
12	13.97	19.80	17.30	15.76
14	16.51	22.40	19.80	18.30
16	19.05	24.90	22.40	20.84
18	21.59	27.40	24.90	23.38
20	24.13	30.00	27.40	25.92
24	29.21	35.10	32.50	31.00

ORDER INFORMATION

Product NO.: KLS1-204GE-XX-R

Pos. NO. _____ Insulator Color: R-Red
I.D.C SOCKET 1.27mm With ear Series _____ Number of Contacts: XX=04-24Pin