

# Connector

## I.D.C Socket Series

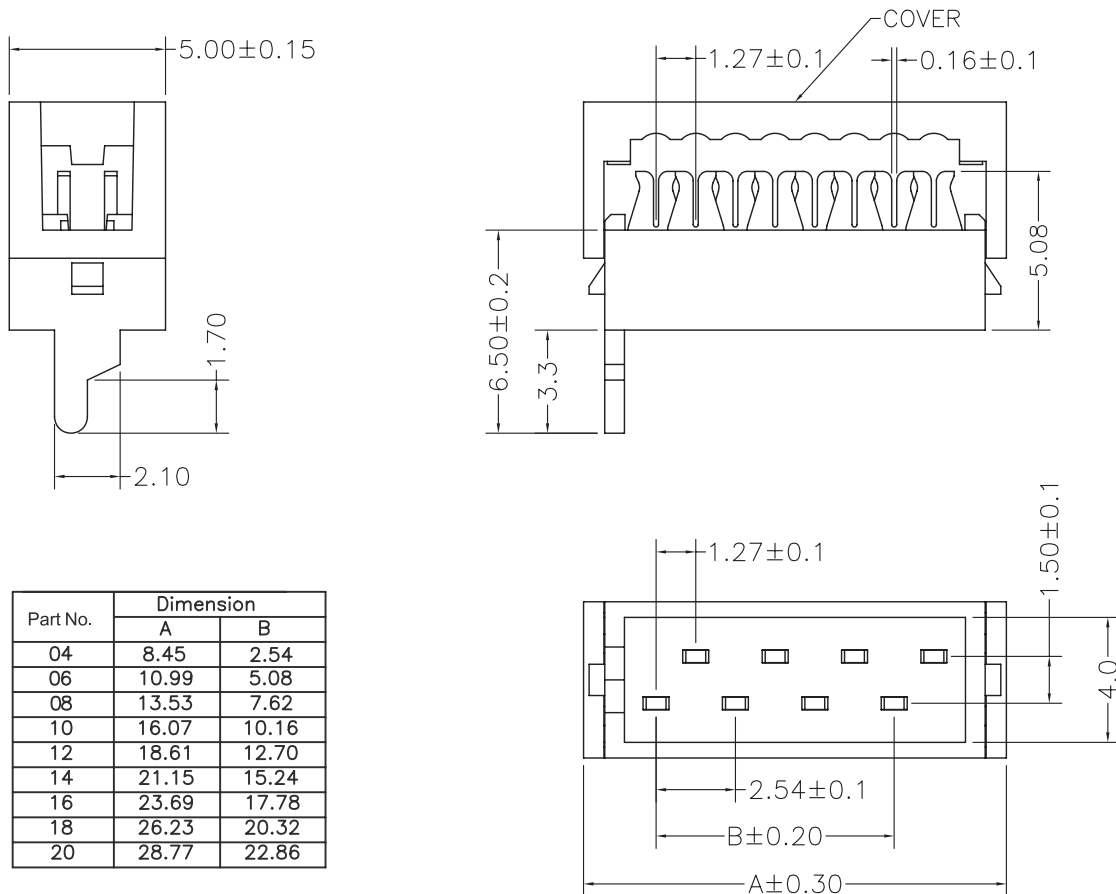
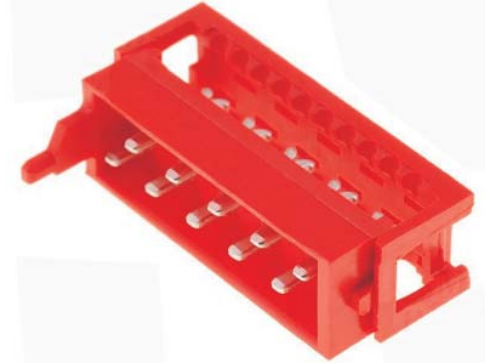
KLS1-204E Connectors micro-match 2.54mm

### Electrical Characteristics:

Current Rating: 1 AMP  
Insulator Resistance: 1000M Ohm min. at DC 250V  
Contact Resistance: 20m Ohm max. at DC 100mA  
Operating Temperature: -45°C~+105°C

### Material:

Housing: PBT UL94V-0  
Contacts: Brass  
Plating: Selective gold plated: gold plated on mating area and Nickel plated on wire cutting area  
Gold plated: 3u" over 50u" nickel  
Cable: 1.27mm (0.050") pitch flat cable



## ORDER INFORMATION

Product NO.: KLS1-204E-XX-R

Pos. NO. \_\_\_\_\_ Insulator Color: R=Red  
Connectors micro-match 2.54mm Series \_\_\_\_\_ Number of Contacts: XX=06-26Pin