

## DIP PLUG Series

KLS1-205X DIP PLUG 2.54mm(0.100") / SYD扁平电缆连接器

### Electrical Characteristics:

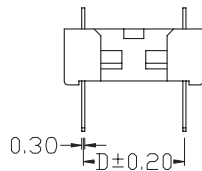
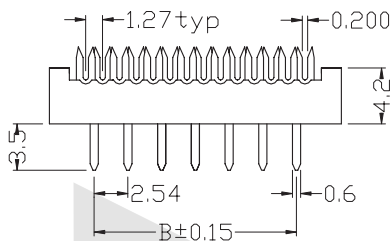
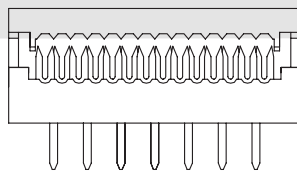
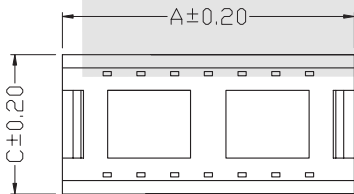
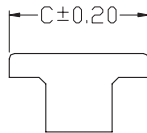
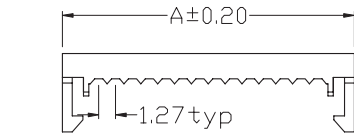
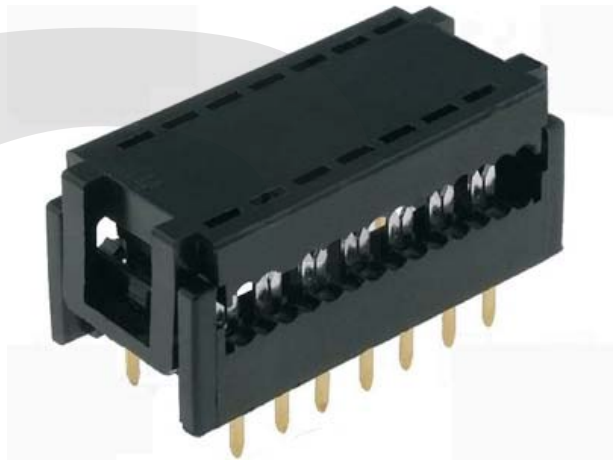
Current Rating: 1 AMP  
Insulator Resistance: 5000MΩmin. at DC 500V  
Contact Resistance: 20mΩmax. at DC 100mA  
Operating Temperature: -45°C~+105°C

### Material:

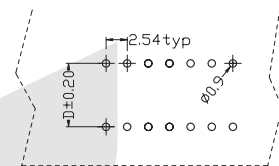
Housing: 30% Glass filled PBT UL94V-0  
Contacts: Brass or Phosphor Bronze  
Plating: Selective gold plated: gold plated on mating area and nickel plated on wire cutting area  
Gold plated: 2u". over 50u" nickel  
Tin plated: 100u". over 50u" nickel  
Cable: 1.27mm(0.050") pitch flat cable

### Features:

\* Recommended 28AWG 1.27mm(0.050") flat cable.  
\* Plug directly into PCB.



PIN	A	B	C	D
6	5.08	12.98	10.60	7.62
8	7.62	15.52	10.60	7.62
10	10.16	18.06	10.60	7.62
14	15.24	23.14	10.60	7.62
16	17.78	25.68	10.60	7.62
18	20.32	28.22	10.60	7.62
20	22.86	30.76	10.60	7.62
24	27.94	35.84	10.60	7.62
26	30.48	38.38	10.60	7.62
28	33.02	40.92	10.60	7.62
30	35.56	43.46	10.60	7.62
24D	27.94	35.74	18.20	15.24
28D	33.02	40.82	18.20	15.24
32D	38.10	45.90	18.20	15.24
34D	40.64	48.44	18.20	15.24
36D	43.18	50.98	18.20	15.24
40D	48.26	56.06	18.20	15.24



P.C.B Layout

## ORDER INFORMATION

Product No.: KLS1-205X-XX-B

Pos. No. \_\_\_\_\_ Insulator Color: B=Black G=Gray  
Dip Plug 2.54mm SYD Series \_\_\_\_\_ Number of Contacts: XX=06-40Pin