

LED OUTDOOR LAMP CLUSTER

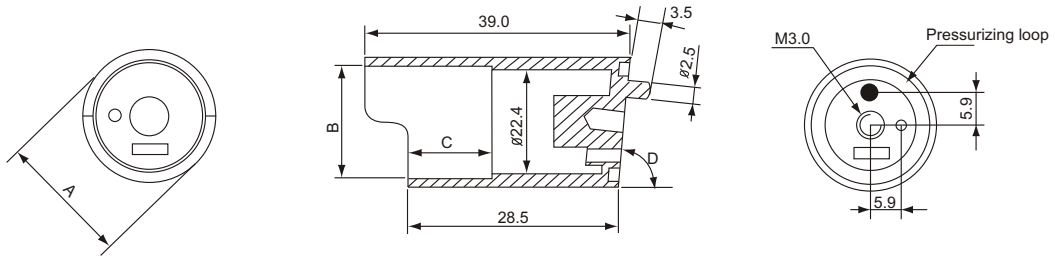
KLS9 CL - S 11x16 A R1G2B1 - XXX
1 2 3 4 5 6 7

- 1 Brand:KLS ELECTRONIC
- 2 Digit Mode: CL-Lamp Cluster
- 3 Shape: R-Round S-Square
- 4 Display Unit Dimension and Quantity:
- 5 Model Number: A. B. C.....
- 6 Color Code: See Part 1. 7
- 7 Special Device:

PACKAGE DIMENSION

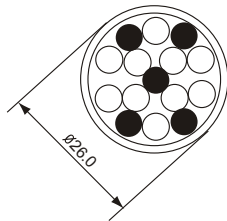
KLS9CL-R26x Series

SPEC.	A	B	C	D
R26A	26 ^{+0.0} _{-0.1}	23.8	7.5	80°
R26B	26 ^{+0.0} _{-0.1}	23.8	9.5	80°
R26C	26 ^{+0.0} _{-0.1}	23.8	14.5	80°

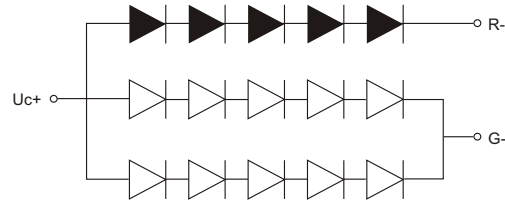


INTERNAL CIRCUIT DIAGRAM

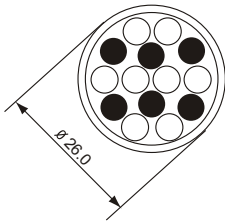
KLS9CL-R26xR5G10



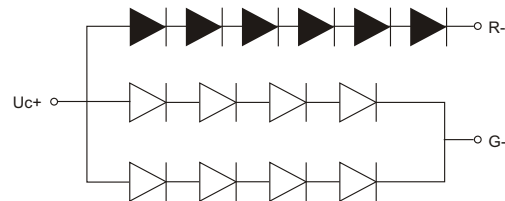
- RED
- GREEN



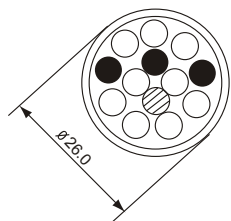
KLS9CL-R26xR6G8



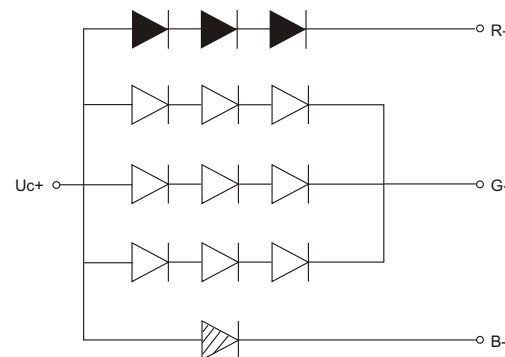
- RED
- GREEN



KLS9CL-R26xR3G9B1



- RED
- GREEN
- ▨ BLUE



Electrical-Optical Characteristics (Ta=25°C)

PARAMETER	SYMBOL	DEVICES	CODE	TYP	MAX	UNIT	TEST CONDITIONS
Forward Voltage	V_F	RED	H	2.25	2.60	V	$I_F=20\text{mA}$
		HI-RED	S	1.85	2.20		
		SUPER-RED	D	1.85	2.20		
		ORANGE	E	2.10	2.50		
		GREEN	G	2.20	2.50		
		YELLOW	Y	2.10	2.50		
Peak Emission Wavelength	λ_p	RED	H	700		nm	$I_F=20\text{mA}$
		HI-RED	S	660			
		SUPER-RED	D	660			
		ORANGE	E	635			
		GREEN	G	568			
		YELLOW	Y	585			
Spectral Line Half-Width	$\Delta\lambda$	RED	H	90		nm	$I_F=20\text{mA}$
		HI-RED	S	20			
		SUPER-RED	D	20			
		ORANGE	E	35			
		GREEN	G	30			
		YELLOW	Y	35			
Reverse Current	I_R	RED	H		20	μA	$V_R=5\text{V}$
		HI-RED	S				
		SUPER-RED	D				
		ORANGE	E				
		GREEN	G				
		YELLOW	Y				
Average Luminous Intensity	I_V	RED	H	500		μcd	$I_F=10\text{mA}$
		HI-RED	S	3500			
		SUPER-RED	D	6000			
		ORANGE	E	2500			
		GREEN	G	2500			
		YELLOW	Y	2000			
Segment-to-Segment Luminous Intensity Ratio	$I_V\text{-M}$		ALL MODELS		1.5:1		$I_F=20\text{mA}$

Absolute Maximum Rating(Ta=25°C)

PARAMETER	RED (Gap)	Hi-RED (GaAlAs/GaAs)	SUPER-RED (GaAlAs/GaAs)	ORANGE (GaAsP/Gap)	GREEN (Gap)	YELLOW (GaAsP/Gap)	UNIT
Reverse voltage V_R	5	5	5	5	5	5	V
Forward current I_F	15	25	25	30	30	30	mA
Peak forward current I_{FP}	50	150	150	150	150	150	mA
Power dissipation P_D	40	60	60	80	80	80	mW
Operating temperature T_{OPR}	-40~+80	-40~+80	-40~+80	-40~+80	-40~+80	-40~+80	
Storage temperature T_{STG}	-40~+85	-40~+85	-40~+85	-40~+85	-40~+85	-40~+85	
Lead soldering temperature	1.60mm from body-maximum 3 second for 260±5						

Remark: Duty cycle: 1:10, Pluse width: 0.1ms

Typical Electrical-Optical Characteristics Curves

