

# DS-65SS3530 DC SPUR GEAR MOTOR

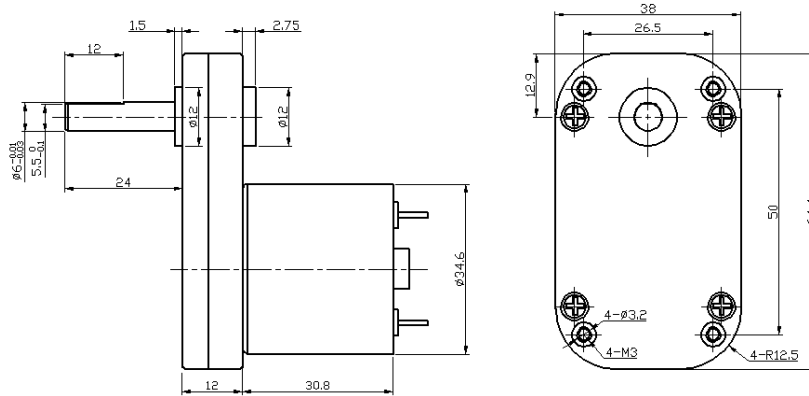
Main Voltage : 6VDC、12VDC、24VDC

Typical Applications :

Instrument, Electric tools, Coffee machine,  
Vending machine, Massager, Game machine,  
Electric window opener, Automation equipment



## APPEARANCE SIZE



## Gearbox Data:

Number of stages	3	4	5
Reduction ratio	40.5, 67.5	135, 225	450
Gearbox length "L" mm	12	12	12
Breaking torque(kgf.cm)	10	25	35
Gearbox efficiency	73%	65%	59%

## Driving Motor Data:

Motor model	Rated Volt.	No load		Load				Stall	
		Current	Speed	Current	Speed	Torque	Output power	Torque	Current
		V	mA	r/min	mA	r/min	gf.cm	W	gf.cm
DS-3530-012-3000	12	≤40	3000	≤240	2200	40	0.9	≥160	≥700
DS-3530-012-4500	12	≤60	4500	≤450	3300	50	1.7	≥300	≥1400
DS-3530-012-6000	12	≤90	6000	≤700	4500	60	2.8	≥350	≥2000
DS-3530-024-3000	24	≤20	3000	≤150	2200	40	0.9	≥160	≥400
DS-3530-024-4500	24	≤30	4500	≤230	3300	50	1.7	≥220	≥600
DS-3530-024-6000	24	≤45	6000	≤360	4500	60	2.8	≥330	≥900

## Remark:

Gear Motor Torque=Driving motor torque\*Reduction ratio\*Gearbox efficiency;

Gear Motor Speed=Driving motor speed/Reduction ratio

Motor detailed config can be customized according to customer's requests, like voltage, speed, as well as shaft length and shape...

Welcome OEM or ODM projects