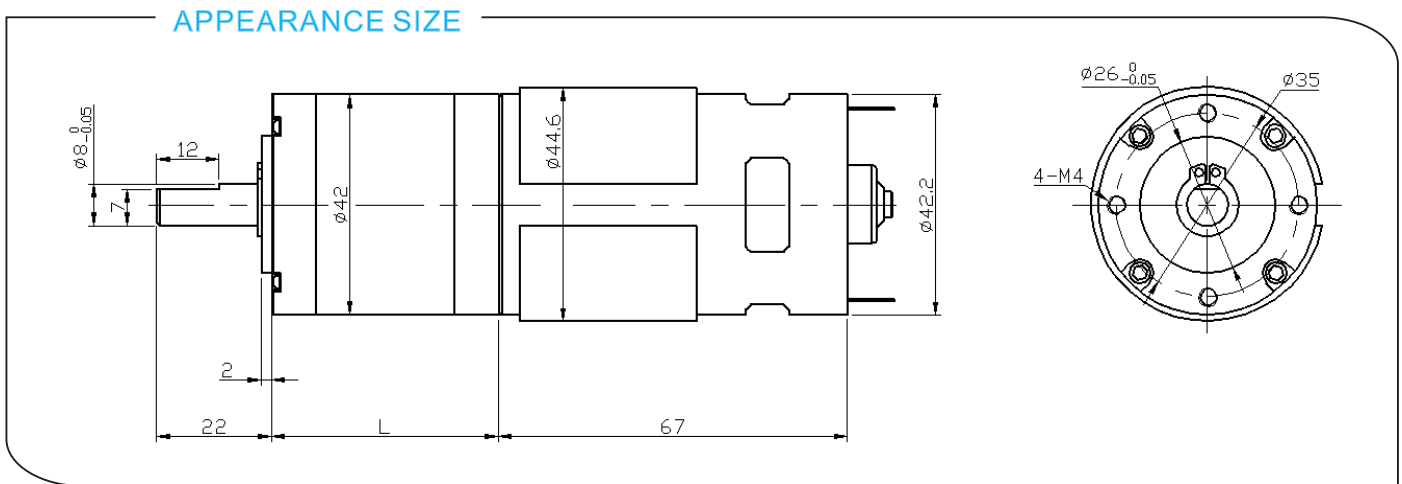


# DS-42RP775 DC PLANETARY GEAR MOTOR

Main Voltage : 12VDC、24VDC

Typical Applications :

Optical instrument, Surveillance cameras, Automated energy efficiency, Water saving equipment, IC water card, Toys and gifts, Office equipment, Household appliance, automation equipment



## Gearbox Data:

Number of stages	1	2	3	4
Reduction ratio	3.7、5	13、18、25	49、67、92、125	181、246、336、458、625
Gearbox length "L"mm	33.5	43.5	53.5	63.5
Breaking torque(kgf.cm)	15	25	50	90
Gearbox efficiency	90%	81%	73%	65%

## Driving Motor Data:

Motor model	Rated Volt.	No load		Load				Stall	
		Current	Speed	Current	Speed	Torque	Output power	Torque	Current
		V	mA	r/min	mA	r/min	gf.cm	W	gf.cm
DS-775-012-3000	12	≤280	3000	≤1300	2600	450	12	≥3600	≥8600
DS-775-012-4500	12	≤450	4500	≤2100	3800	500	19.5	≥4600	≥16200
DS-775-012-6000	12	≤680	6000	≤3600	5200	600	32	≥5600	≥27200
DS-775-024-3000	24	≤120	3000	≤920	2600	450	12	≥2800	≥5100
DS-775-024-4500	24	≤230	4500	≤1400	3800	500	19.5	≥4100	≥11000
DS-775-024-6000	24	≤350	6000	≤2300	5100	600	31.4	≥5800	≥19000

## Remark:

Gear Motor Torque=Driving motor torque\*Reduction ratio\*Gearbox efficiency;

Gear Motor Speed=Driving motor speed/Reduction ratio

Motor detailed config can be customized according to customer's requests, like voltage,speed,as well as shaft length and shape...

Welcome OEM or ODM projects