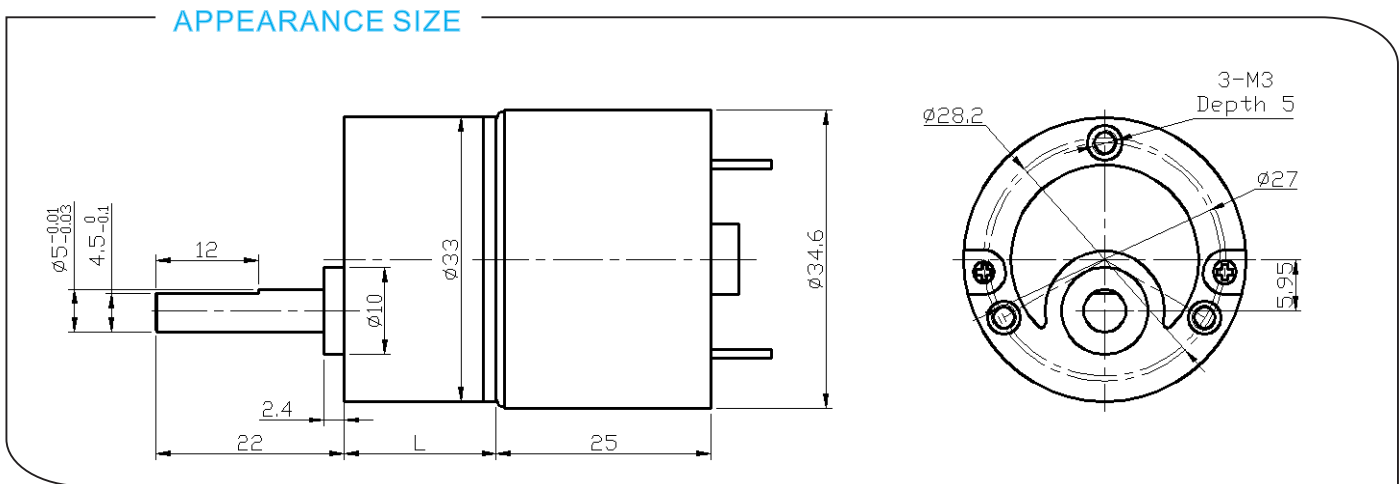


# DS-33RS3525 DC SPUR GEAR MOTOR

Main Voltage : 6VDC、12VDC、24VDC

Typical Applications :

Instrument, Electric tools, Coffee machine,  
Vending machine, Massager, Game machine,  
Electric window opener, Automation equipment



## Gearbox Data:

Number of stages	3	4	5	6	7
Reduction ratio	20	50	125	312.5	781
Gearbox length "L"mm	17.7	19.9	22.2	24.4	26.75
Breaking torque(kgf.cm)	10	15	20	24	24
Gearbox efficiency	73%	65%	59%	53%	48%

## Driving Motor Data:

Motor model	Rated Volt.	No load		Load				Stall	
		Current	Speed	Current	Speed	Torque	Output power	Torque	Current
		V	mA	r/min	mA	r/min	gf.cm	W	gf.cm
DS-3525-012-3000	12	≤40	3000	≤170	2200	25	0.6	≥120	≥600
DS-3525-012-4500	12	≤60	4500	≤250	3300	35	1.2	≥180	≥900
DS-3525-012-6000	12	≤100	6000	≤450	4500	45	2.1	≥200	≥1300
DS-3525-024-3000	24	≤25	3000	≤80	2200	25	0.6	≥100	≥300
DS-3525-024-4500	24	≤30	4500	≤130	3300	35	1.2	≥180	≥450
DS-3525-024-6000	24	≤50	6000	≤170	4500	45	2.1	≥250	≥700

## Remark:

Gear Motor Torque=Driving motor torque\*Reduction ratio\*Gearbox efficiency;

Gear Motor Speed=Driving motor speed/Reduction ratio

Motor detailed config can be customized according to customer's requests, like voltage, speed, as well as shaft length and shape...

Welcome OEM or ODM projects