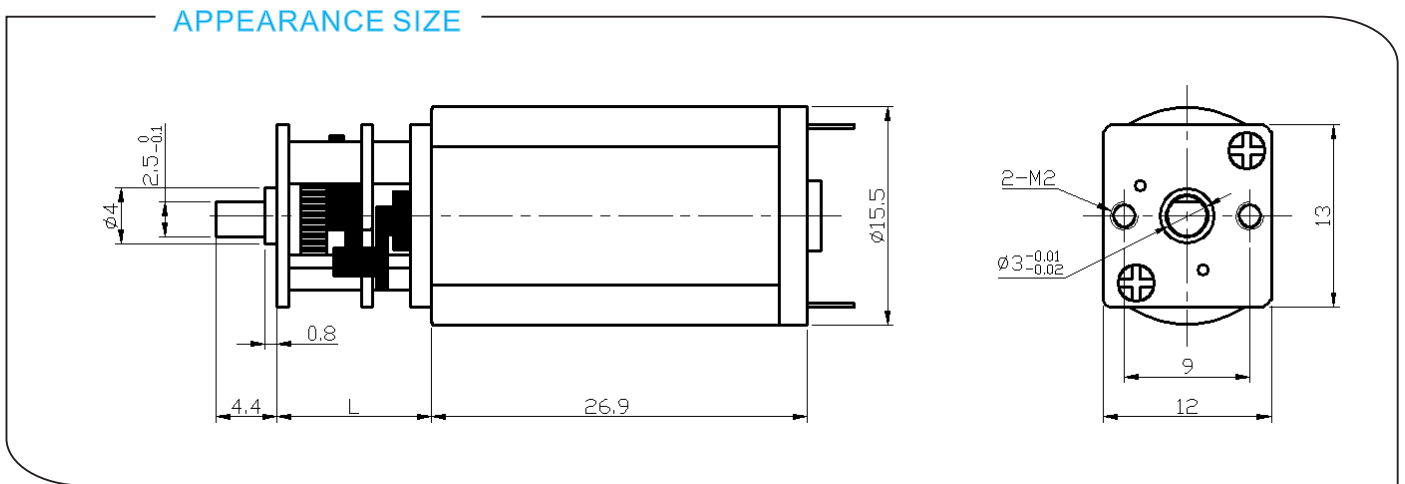


DS-13SS050 DC SPUR GEAR MOTOR

Main Voltage : 3VDC、6VDC、12VDC、24VDC

Typical Applications :

Instrument, Digital product, Automatic door-lock,
Medical equipment, Security monitoring



Gearbox Data:

Number of stages	2	4	5
Reduction ratio	3、7、10	16、17、20、30、35 50、63、70、86	115、150、210、250、360
Gearbox length "L"mm	11	11	11
Breaking torque(kgf.cm)	0.6	0.9	2
Gearbox efficiency	81%	65%	59%

Driving Motor Data:

Motor model	Rated Volt.	No load		Load				Stall	
		Current	Speed	Current	Speed	Torque	Output power	Torque	Current
		V	mA	r/min	mA	r/min	gf.cm	W	gf.cm
DS-050-006-9000	6	≤60	9000	≤260	7500	8	0.6	≥30	≥550
DS-050-006-12000	6	≤70	12000	≤300	9300	10	1.0	≥40	≥1000
DS-050-012-9000	12	≤30	9000	≤130	7500	8	0.6	≥30	≥300
DS-050-012-12000	12	≤50	12000	≤200	10000	10	1.0	≥40	≥600

Remark:

Gear Motor Torque=Driving motor torque*Reduction ratio*Gearbox efficiency;

Gear Motor Speed=Driving motor speed/Reduction ratio

Motor detailed config can be customized according to customer's requests, like voltage, speed, as well as shaft length and shape...

Welcome OEM or ODM projects