

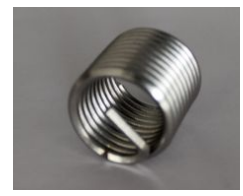


XinXiang Beiou Import & Export co.,Ltd.
The 2nd Big industrial park,XinXiang City,
Henan, P.R. China 453000

TEL:+8618336079600

Web:<http://www.cncsprings.com/>

E-mail:beious@cncsprings.com



Nominal Thread Size	Size Designation	"Q"Nominal Length					Outside Diameter		Number of Coils Nominal Length				
		1Dia	1-1/2Dia	2Dia	2-1/2Dia	3Dia	Min	Max	1Dia	1-1/2Dia	2Dia	2-1/2Dia	3Dia
M2*0.4	2CN	2.0	3.0	4.0	5.0	6.0	2.62	2.76	3.5	6	8	10.2	12.5
M2.5*0.45	2.5CN	2.5	3.8	5	6.3	7.5	3.3	3.5	4	6.5	9	10.5	12.5
M3*0.5	3CN	3	4.5	6	7.5	9	3.8	4	3	4.5	6	7.5	9
M3.5*0.6	3.5CN	3.5	5.3	7	8.8	10.5	4.55	4.75	4	6.4	8.9	11.4	13.9
M4*0.7	4CN	4	6	8	10	12	5.05	5.25	4	7	9.5	11.7	14.2
M5*0.8	5CN	5	7.5	10	12.5	15	6.35	6.6	4.5	7.5	10	12.6	15.3
M6*1	6CN	6	9	12	15	18	7.6	7.85	4.5	7	10	12.2	14.9
M7*1	7CN	7	10.5	14	17.5	21	8.65	8.9	5.2	8.3	11.5	14.6	17.3
M8*1	8CN	8	12	16	20	24	9.85	10.1	6	9.6	13.1	16.7	20.3
M8*1.25	8CN	8	12	16	20	24	9.85	10.1	5	7.5	10.5	13.5	16.5
M10*1	10CN	10	15	20	25	30	12.1	12.5	7.7	12.1	16.5	20.8	25.5
M10*1.25	10CN	10	15	20	25	30	12.1	12.5	6.1	9.7	13.3	16.9	20.5
M10*1.5	10CN	10	15	20	25	30	12.1	12.5	5	8	11	14.2	17.3
M11*1.5	11CN	11	16.5	22	27.5	32.5	13.1	13.5	5.7	9.1	12.5	15.9	19.3
M12*1	12CN	12	18	24	30	36	14.4	14.8	9.4	14.7	19.9	25	30.1
M12*1.25	12CN	12	18	24	30	36	14.4	14.8	7.5	11.8	16.1	20.3	24.5
M12*1.5	12CN	12	18	24	30	36	14.4	14.8	6.2	9.8	13.5	17.1	20.8
M12*1.75	12CN	12	18	24	30	36	14.4	14.8	5	8.5	11.75	14.8	18
M14*1.25	14CN	14	21	28	35	42	16.8	17.2	8.8	13.8	18.8	23.8	28.8
M14*1.5	14CN	14	21	28	35	42	16.8	17.2	7.3	11.5	15.7	19.9	24.3
M14*2	14CN	14	21	28	35	42	16.8	17.2	5.5	9	13.5	15.2	18.4
M16*1.5	16CN	16	24	32	40	48	19	19.4	8.5	13.3	18.1	22.8	27.7
M16*2	16CN	16	24	32	40	48	19	19.4	6.5	10	13.5	17.2	21.2
M18*1.5	18CN	18	27	36	45	54	21.48	21.82	9.8	15	20.3	25.9	31.4
M18*2	18CN	18	27	36	45	54	21.5	22	7.1	11.2	15.2	19.5	23.6
M18*2.5	18CN	18	27	36	45	54	21.5	22	5.5	9	12	15.7	19
M20*1.5	20CN	20	30	40	50	60	23.7	24.2	10.7	16.7	22.8	28.9	35
M20*2	20CN	20	30	40	50	60	23.7	24.2	8	12.5	17.1	21.9	26.5
M20*2.5	20CN	20	30	40	50	60	23.7	24.2	6	10	13.5	17.5	21.2
M22*1.5	22CN	22	33	44	55	66	26	26.52	11.9	18.34	22.9	28.9	35
M22*2	22CN	22	33	44	55	66	26.3	26.8	8.8	13.7	18.6	23.9	29
M22*2.5	22CN	22	33	44	55	66	26.3	26.8	7	11	15	19	23
M24*1.5	24CN	24	36	48	60	72	28.4	28.92	13	20	27	34	41
M24*2	24CN	24	36	48	60	72	28.6	29.1	9.6	15	20.3	25.9	31.3
M24*3	24CN	24	36	48	60	72	28.6	29.1	6.5	10	13	17.5	21.2
M27*1.5	27CN	27	40.5	54	67.5	81	31.44	32.14	14.9	22.8	30.7	38.5	46.4
M27*2	27CN	27	40.5	54	67.5	81	31.94	32.56	10.9	16.9	23.3	29.4	35.5
M27*3	27CN	27	40.5	54	67.5	81	32.2	32.7	7	11.5	15	19.5	24
M30*1.5	30CN	30	45	60	75	90	34.64	35.44	16.7	25.5	34.3	43.1	52
M30*2	30CN	30	45	60	75	90	34.94	35.74	12.3	19	25.9	32.8	39.5
M30*3.5	30CN	30	45	60	75	90	35.2	35.7	7	11	14	19	23

M33*2	33CN	33	49.5	66	82.5	99	38.3	38.8	13.8	21.2	25.7	32.8	39.5
M33*3.5	33CN	33	49.5	66	82.5	99	38.3	38.8	7.8	12.2	16.6	21.1	25.5
M36*2	36CN	36	54	72	90	108	42.1	42.6	15	23	31.4	39.5	47.8
M36*4	36CN	36	54	72	90	108	42.1	42.6	7.3	11.6	15.8	19.9	24.3
M39*2	39CN	39	58.5	78	97.5	117	45.1	45.6	16.4	25.3	34.2	43	51.9
M39*3	39CN	39	39	58.5	78	97.5	55	55.5	13.6	16.8	22.8	28.8	34.8