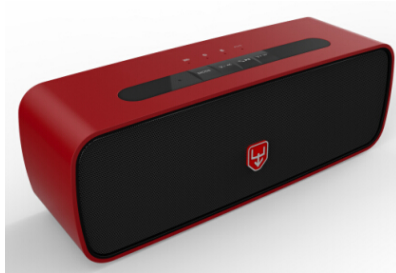


BETNEW X02 TF Card Bluetooth Speakers



BETNEW X02 TF Card Bluetooth Speakers



Red



Silver



Black

Specification:

Model: BETNEW X02

Bluetooth Version: CSR 4.0

Battery Capacity: 2000mAh

Voltage: 5V

Electric Current: 1000mA

Output Power: 2*5W

Sound Track: 2.0

Bluetooth Range: ≥10M

Frequency Response: 100hz-18khz

Playing Time : About 8 hours

Case Material: Aluminium

Net Weight: 695 g

Dimensions:194 x 58 x 69 mm

BETNEW X02 TF Card Bluetooth Speakers



Main Features:

- Newest Bluetooth version 4.0 Technology Allows you to connect wirelessly up to 33 feet away.
- The compact sizes and exquisite design well explain the beauty of minimalism
- Built-in microphone for hands-free speaker phone calling
- Built-in 2000mAh Li-Ion Rechargeable Battery for up to 10 hours of playtime.
- The Speaker contains 2 high quality 52mm Drivers deliver crisp clean sound with deep bass.
- With TF card function
- Ultra-subwoofer stereo audio performance





BETNEW X02 TF Card Bluetooth Speakers

What's in the Box:

- 1 * X02 Bluetooth Speaker
- 1 * USB Charging Cable
- 1 * 3.5mm Audio Cable
- 1 * User's Guide

Packaging Details:

Packed with Gift Box

Box Size: 215*98*82mm

CTNS: 15 pcs/Carton

Carton Size: mm

Carton MEAS.: CBM

N/W: , G/W:

20`GP: Cartons

40`HQ: Cartons

