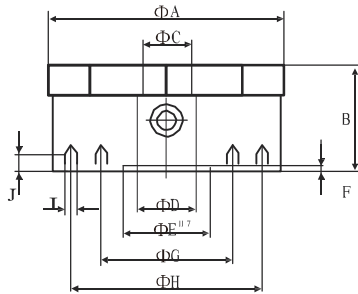
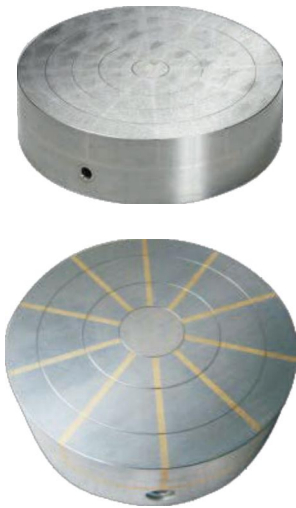


PERMANENT MAGNETIC CHUCK

Radial Pole Round Permanent Magnetic Chuck RPMR Series



Use:

Used for surface grinder, cylindrical grinder, internal grinder and lathe.
Best for cylindrical and ring-shaped workpieces.
Concentric grooves to simplify workpiece alignment.
Through hole possible up to maximum diameter.
Supplied as standard without through hole in centre.
Available with flange on request.

Features:

Magnets: strong permanent neodymium iron-boron magnets.
Magnetic field: dense, concentrated, without any stray fields, preventing magnetization of the tool.
Turn on/off method: hexagon wrench swing, light switching force.
Nominal holding force: 250 N/cm (JIS)
Pole pitch: radial pole.
Magnetic field height: 12 mm
Pole plate wearing limit: 5 mm (Dia 150-300mm), 8 mm (Dia 350-400mm), which the top plates can be drilled and tapped.
Parallelism, flatness and squareness: 0.005 mm/100 mm
Coolant & waterproof structure, can sink in liquid.

Standard Sizes:

Art.No	Dimensions mm										Number to poles	Weight (kg)
	A	B	C	D	E	F	G	H	I	J		
RPMR100	100	56	14			5	76		3xM8	15	6	2.6
RPMR130	130	56	16	20	51	5	80		3xM8	15	10	5.7
RPMR160	160	56	20	24	50	5	80	120	4xM8	15	10	6.5
RPMR200	200	56	28	30	50	5	110	180	4xM8	15	12	13.0
RPMR250	250	56	30	50	60	5	140	220	4xM10	18	16	20.0
RPMR300	300	56	40	58	80	5	180	260	4xM12	18	16	30.0
RPMR350	350	56	40	58	150	5	220	300	4xM12	18	20	49.0
RPMR400	400	61	40	58	170	5	260	340	4xM12	18	20	75.0

Other size on request.