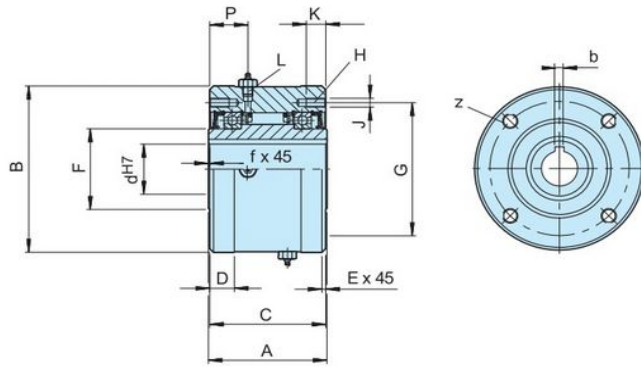


FSO



FSO

Types FS, FSO, and HPI 300 to 1027 are sprag type freewheels self-contained, sealed and bearing supported, using two ball bearings. Units are delivered oil or grease lubricated according to the type. It is a Formsprag USA design that uses tall sprags with multi-radius active surfaces. Designed specially for large size freewheels to compensate for any eccentricity due to bearing wear. Types FS and HPI are oil lubricated and use standard shaft lip seals. Type FSO is grease lubricated and equipped with special grease seals.

Model Number	Torque Drag (Nm)	Overrunning		Diameter(mm)							G		
		Inner Race	Outer Race	A	B	C	D	E	S	H	Num	Holes	Depth
FSO300	379	3000	900	60.45	76.2	63.5	28.58	66.67	-	1.58x45°	4	M6	12.7
FSO400	407	2800	850	68.26	88.9	69.85	30.15	73.02	-	1.58x45°	4	M8	16
FSO500	1621	2500	800	85.72	107.9	88.9	44.45	92.07	-	1.58x45°	4	M8	15.87
FSO600	3105	2200	750	92.07	136.5	95.25	63.50/69.09	120.65	-	1.58x45°	6	M8	15.87
FSO700	6900	1600	450	123.82	180.9	127	90.42/101.6	158.75	-	1.58x45°	8	M10	19.05
FSO750	9660	1000	650	149.22	222.2	152.4	107.95	177.8	31.75	1.58x45°	8	M12	25.4
FSO800	17940	850	525	149.22	254	152.4	139.7	227.01	31.75	1.58x45°	8	M12	25.4
FSO900	24408	700	500	158.75	304.8	161.9	161.92	247.65	34.92	1.58x45°	10	M16	31.75
FSO1027	36612	500	375	165.1	381	168.3	228.6	298.45	34.92	3.17x45°	12	M16	25.4

#### NOTES

- 1)  $T_{max} = 2 \times T_{KN}$   
» Refer to Selection page 10 to 13
- 2) Inner race/outer race
- 3) Inner race/outer race
- 4) Inch bore available on request
- \*) 6 holes equally spaced at 60° plus 2 extra-holes at 180°
- 5) Tolerance for sizes 900 and 1027: -0,08

#### MOUNTING EXAMPLE

