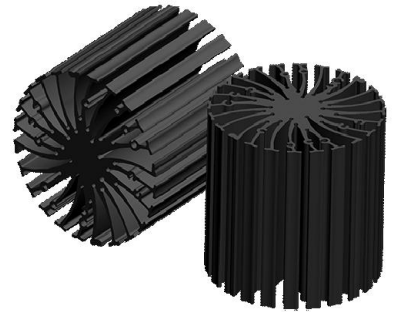


**EtraLED**

**EtraLED-XIT-8580 Modular Passive LED Cooler Ø85mm for Xicato**

**Features VS Benefits**

- \* The EtraLED-XIT-8580 Modular Passive LED Star Heat Sinks are specifically designed for luminaires using the Xicato LED Modules.
- \* Mechanical compatibility with direct mounting of the LED modules to the LED cooler and thermal performance matching the lumen packages.
- \* Designs for XSM Module from 1300 to 4200 lumen.
- \* Thermal resistance range Rth 1.3°C/W. ( Thermal class N )
- \* Modular design with mounting holes foreseen for direct mounting of Xicato XSM, XTM and XIM Modules .
- \* Diameter 85mm - standard height 80mm, Other heights on request.
- \* Extruded from highly conductive aluminum.



\*The EtraLED-XIT-8580 Xicato modular passive LED Star Heat Sink is standard foreseen from a variety of mounting holes which allow direct mounting of all Xicato Spot and down light LED modules and secondary optics on the LED heat sink.

\*In this way mechanical afterwork and related costs can be avoided, and lighting designers can standardize their designs on a limited number of LED coolers.

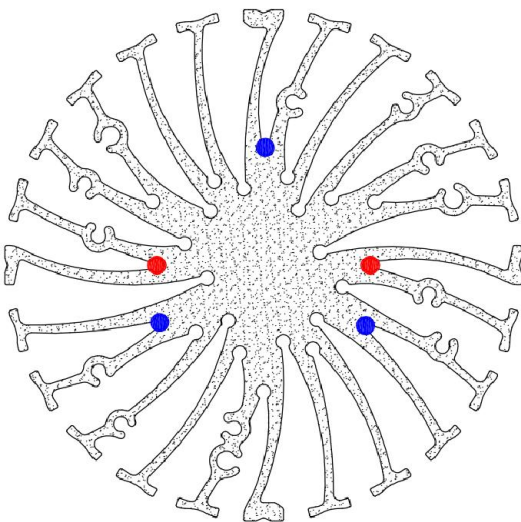
\*Below you find an overview of Xicato LED modules which standard fit on the EtraLED-XIT-8580 Passive LED Star Heat Sinks.

\*MingFa performs thermal validation tests on each of the LED modules mounted on the LED cooler and publishes.

\*This data in the Xicato Cooler thermal validation reports.

\*For a full overview of available LED coolers for Xicato LEDs, please refer to the Xicato LED cooler overview on.

**XICATO**



**EtraLED-XIT-8580 standard height 80mm for Xicato LED modules Mounting Options**

**Xicato XSM LED modules name :**

- XSM80xx-400 ; XSM80xx-2000 ; XSMV8xx-1300 ;
- XSM80xx-700 ; XSM80xx-3000 ; XSMV8xx-2000 ;
- XSM80xx-1000 ; XSM80xx-4000 ; XSMV8xx-3000 ;
- XSM80xx-1300 ;

Direct mounting with 3 screws M3 x 12mm;  
Blue indicator marks.

**Xicato XIM LED modules name :**

- XIM1980xx13 ; XIM1980xx20 ;
- XIM19V8xx13 ; XIM19V8xx20 ;
- XIM1995xx13 ;

Direct mounting with 3 screws M3 x 20mm;  
Blue indicator marks.

**Xicato XTM LED modules:**

- XTM1980xx13 ; XTM1980xx50 ; XTM19V8xx13 ; XTM19V9xx13 ;
- XTM1980xx20 ; XTM1995xx13 ; XTM19V8xx20 ; XTM19V9xx20 ;
- XTM1980xx30 ; XTM1995xx20 ; XTM19V8xx30 ; XTM19V9xx30 ;
- XTM1980xx40 ; XTM1995xx30 ;

Direct mounting with 3 screws M3 x 8mm;  
Blue indicator marks.

Direct mounting by Zhaga mounting holes with 2 screws M3 x 8mm;  
Red indicator marks.

**Mounting Options and Drawings & Dimensions**

Example: EtaLED-XIT-8580-B-2

Example: EtaLED-XIT-85 **1** - **2** - **3**

**1** Height (mm)

**2** Anodising Color

B-Black

C-Clear

Z-Custom

**3** Mounting Options - see graphics for

details Combinations available

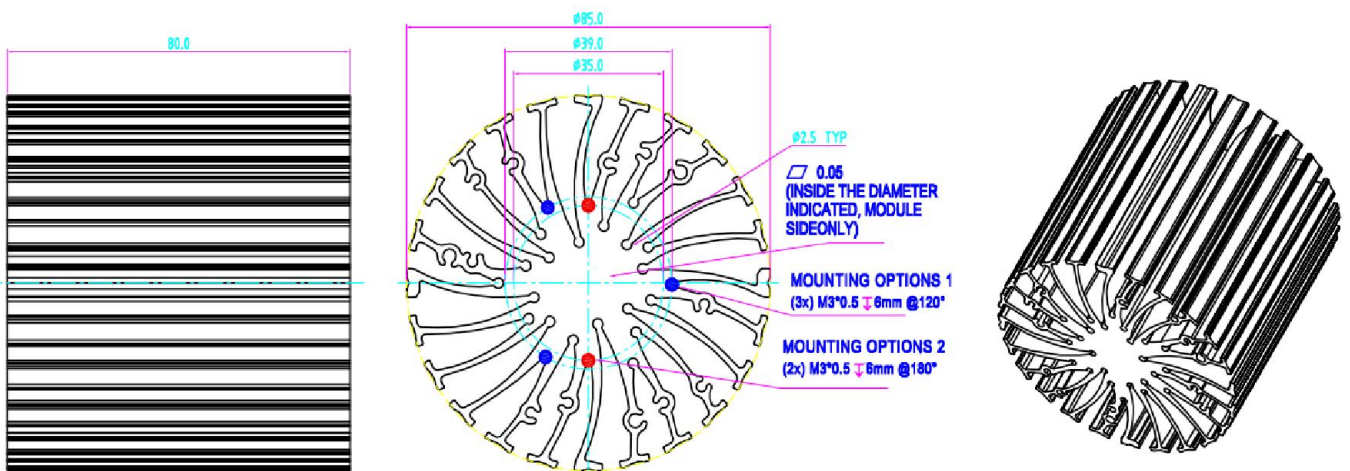
Ex.order code - 12

means option 1 and 2 combined

MingFa recommends the use of a high thermal conductive interface between the LED module and the LED cooler. Either thermal grease, a thermal pad or a phase change thermal pad thickness 0.1-0.15mm is recommended.

**XICATO**

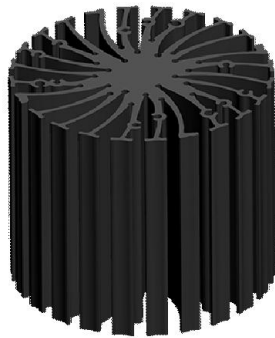
MOUNTING OPTION	PART NUMBER	THREAD	THREAD DEPTH
NONE	EtaLED-XIT-85#-B-N	NONE	NONE
1	EtaLED-XIT-85#-B-1	M3*0.5	6mm
2	EtaLED-XIT-85#-B-2	M3*0.5	6mm



*EtraLED*

**EtraLED-XIT-8580 Modular Passive LED Cooler  $\Phi$ 85mm for Xicato**

The thermal data table

	
<b>Model No.</b>	<b>EtaLED-XIT-8580</b>
<b>Size</b>	<b><math>\Phi</math>85xH80mm</b>
<b>Material</b>	<b>AL6063-T5</b>
<b>Finish</b>	<b>Black Anodized</b>
<b>Weight(gr)</b>	<b>458</b>
<b>Thermal Wattage</b>	<b>38W</b>
<b>Heatsink<math>\Theta</math>s-a<sup>2</sup></b>	<b>58826</b>
<b>Thermal Resistance (<math>^{\circ}</math>C/W)<sup>2</sup></b>	<b>1.3</b>

Dissipated Power Pd(W)	Heat sink to ambient thermal resistance Rhs-amb ( $^{\circ}$ C/W)		Heat sink to ambient temperature rise Ths-amb ( $^{\circ}$ C)	
	EtaLED-XIT-8580		EtaLED-XIT-8580	
10W	1.9	19		
15W	1.7	26		
20W	1.6	32		
25W	1.5	37		
30W	1.4	43		
35W	1.4	48		
40W	1.3	53		
50W	1.2	62		

