

型号 Model	线径 mm ²	电流	电压 Volt	螺丝 Screw	尺寸 Dimensions(mm/in)				
					Unit	A	B	C	D
KF8H	1.5	17.5A	450V	M2.5x5	(mm)	8.00	17.00	88	93.90
KF8HWP	1.5	17.5A	450V	M2.5x5	(mm)	8.00	17.00	88	93.90
KF10H	2.5	24A	450V	M3.0x6	(mm)	10.00	20	110	117.30
KF10HWP	2.5	24A	450V	M3.0x6	(mm)	10.00	20	110	117.30
KF12H	6.0	41A	500V	M3.5x7	(mm)	12.00	24.00	132	140.00
KF12HWP	6.0	41A	500V	M3.5x7	(mm)	12.00	24.00	132	140.00
KF14H	10.0	57A	750V	M4x9	(mm)	13.50	25.60	148.50	158.0
KF14HWP	10.0	57A	750V	M4x9	(mm)	13.50	25.60	148.50	158.0

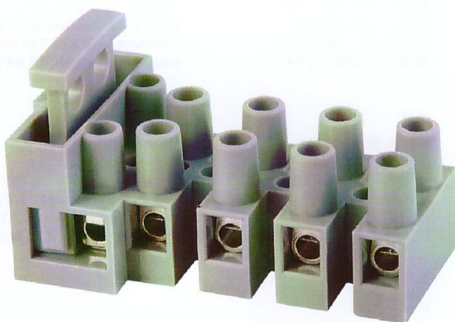
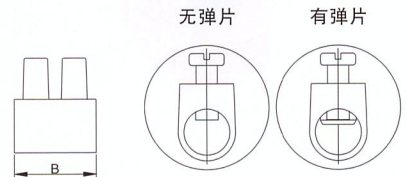
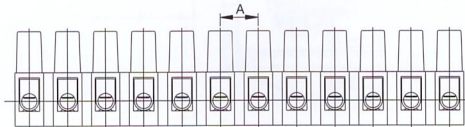
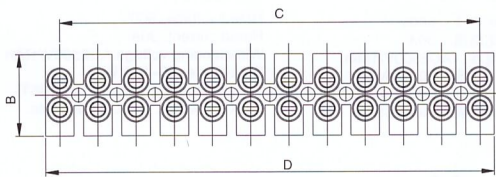
KF8H KF10H KF12H KF14H (无弹片)
 KF8HWP KF10HWP KF12HWP KF14HWP (有弹片)

材质及电镀

间距: 8/10/12/13.5mm
 极数: 2P-12P
 材质: PA66, UL94V-0
 温度: -40°C~+105°C
 认证: us CE

MATERIAL

Pitch: 8/10/12/13.5mm
 Poles: 2P-12P
 Material: PA66, UL94V-0
 Temperature range: -40°C~+105°C



材质及电镀

间距: 10.00mm
 极数: 2P、3P、4P、5P、6P
 螺丝: M3、钢、镀锌
 端子: 黄铜、镀镍
 塑件: PA66, UL94V-0

MATERIAL

Pitch: 10.00mm
 Poles: 2P、3P、4P、5P、6P
 Screw: M3, Steel, Zinc plated
 Terminal: Brass, Ni plated
 Housing: PA66, UL94V-0

性能

额定电压: 450V
 额定电流: 10A
 耐电压: AC2500V/1Min
 使用线径: 18-12A WG
 温度范围: -40°C~+105°C
 最大锁紧扭力: 6kg.cm

CAPABILITY

rated voltage: 450V
 Rated current: 10A
 Withstanding voltage: AC2500V/1Min
 Wire range: 18-12A WG
 Temperature range: -40°C~+105°C
 Max. Torque Value: 6kg.cm

认证: us CE

KF801

