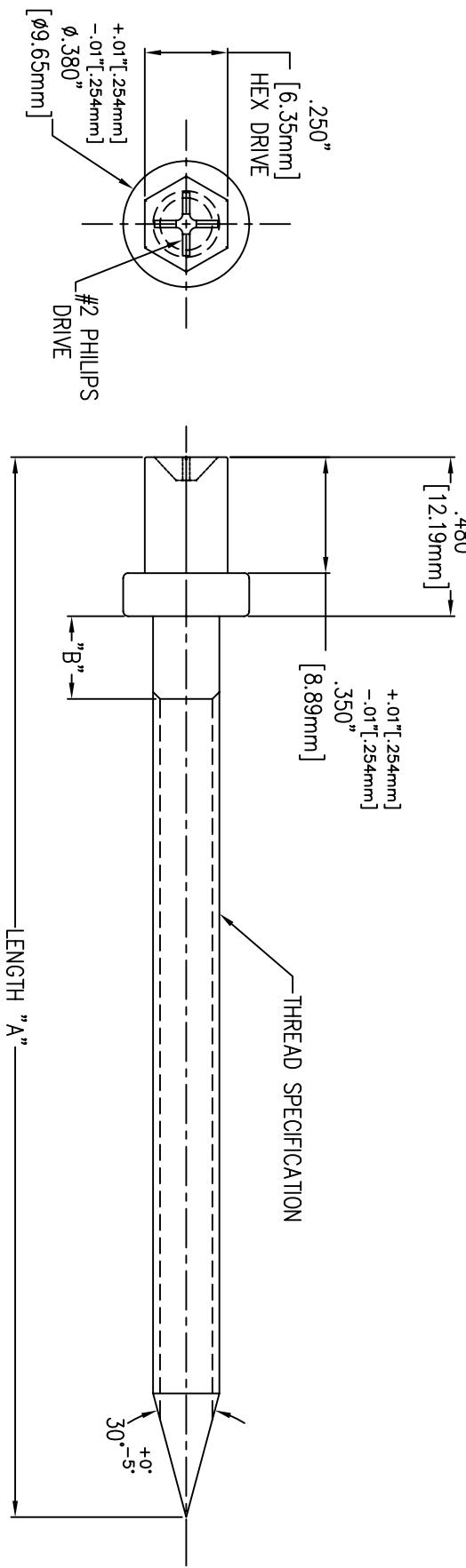
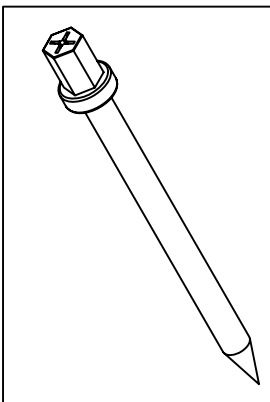


REV.	DATE	ISSUE/REVISION RECORD	AUTH.	DR.	CHK.



SL.NO.	THREAD SPECIFICATION	LENGTH "A"	"B" OPTION-1	"B" OPTION-2
1	#8-8 COARSE GIMLET POINT	1.72" [43.69mm]		
2	#8-8 COARSE GIMLET POINT	2.07" [52.58mm]	0.25" [6.35mm]	0.063" [1.59mm]
3	#8-8 COARSE GIMLET POINT	2.22" [56.39mm]		
4	#10-8 COARSE GIMLET POINT	3.20" [81.28mm]		

NOTES :

1. MATERIAL : HARDENED STEEL 1022 OR EQUIVALENT
2. FINISH : BLANK ZINC PHOSPHATE
3. PHIL DEPTH : 0.090" [2.29mm] TO 0.115" [2.92mm]

COLOUR/REV	PART NUMBER	PART NAME	MATERIAL SIZE	UNIT/CONF	FINISH	SYM	WEIGHT	REF

<p>TOLERANCES UNLESS OTHERWISE SPECIFIED</p> <p>XX +/- .01" XXX +/- .005" FRACTIONS +/- 1/64" ANGULAR +/- 1/2° SYMBOLS ANSI Y14.5</p>	<p>SHEET TITLE COARSE THREAD SCREWS</p> <p>PROPRIETARY STATEMENT This drawing is the property of the Bon Source. It's contents may not be disclosed nor reproduced without the written consent of the Bon Source.</p>	<p>Bon Source 4430 Gibsonia Road Gibsonia, Pa 15044</p>
<p>DRAWN BY: BONSOURCE DRAWING NO.: - REVISION LEVEL: - SHEET NUMBER: 1 OF 1 SCALE: 2 : 1 DATE: 07-15-11 CHECKED BY: VEERA</p>		