

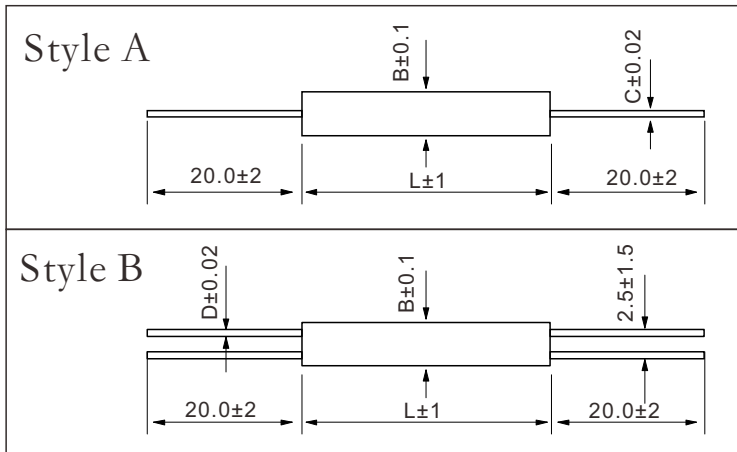
● Features

- I Full molded construction
- II High precision
- III Moisture-proof

● Applications

- I Mostly used in numerical control machines
- II Power supplier of computerized embroidering machine
- III Precise instruments and meters
- IV Used in all kinds of vile working conditions

● Dimensions



Type	Dimensions(mm)			
	L	B	D	C
RE701	15.2	Φ6	Φ0.8	Φ1.0
RE702	19.0	Φ7	Φ0.8	Φ1.0
RE704	27.0	Φ9	Φ0.8	Φ1.0
RE706	34.0	Φ10	Φ0.8	Φ2.5
RE708	50.0	Φ10	Φ0.8	Φ2.5

● Reference Standards

JISC 5201-1

● Ordering Information

Example:

RE701	A	1W	10R00	F	± 100%PPM
(1)	(2)	(3)	(4)	(5)	(6)
Series Name	Style	Power	Resistance	Resistance Tolerance	TCR

(1)Series Name:RE701, RE702, RE704, RE706, RE708

(2)Style: A=style A, B=style B

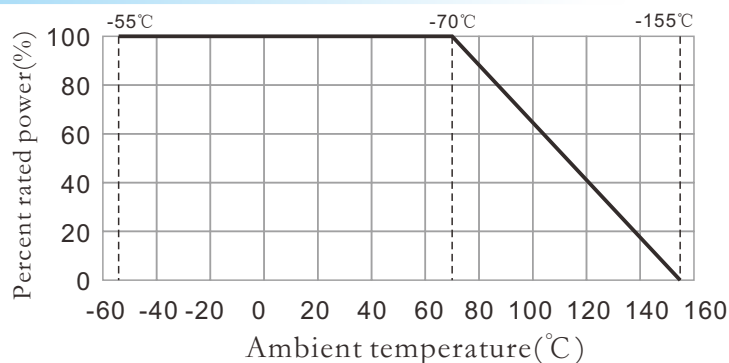
(3)Power:1W,2W,4W,6W,8W

(4)Resistance:0R100=0.1Ω,0R220=0.22Ω,10R00=10Ω,1M000=1MΩ

(5)Resistance Tolerance: P(±0.02%),W(±0.05%)B=±0.1%,C=±0.25%,D=±0.5%,F=±1.0%

(6)TCR:±100%PPM/°C,±250%PPM/°C

Derating curve



Applications And Ratings

Type	Rated Power	Resistance Range(Ω)		Tolerance	Temperature coefficient (ppm/°C)	Insulation voltage	Insulation resistance
		Min	Max				
RE701	1W	1R0	1K0	±1%(F) ±2%(G) ±5%(J) ±10%(K)	±100 ±250	500V	≥1GΩ
RE702	2W	1R0	3K3				
RE704	4W	1R0	5K1				
RE706	6W	1R0	10K				
RE708	8W	1R0	33K				

Performance

Test Item	Specifications	Test Methods (JIS C 5201-1)
Load life	$\Delta R \leq \pm (5\%R + 0.1\Omega)$	70°C , PR , 1000h
Dampheat, steady state	$\Delta R \leq \pm (5\%R + 0.1\Omega)$	40°C , RH93 ± 3% , 500h
Terminal tensile strength	$\Delta R \leq \pm (1\%R + 0.05\Omega)$	50N , 1min
Leaching	$\Delta R \leq \pm (1\%R + 0.05\Omega)$	350°C ± 10°C , 3.5 ± 0.5S
Solderability	≥95%	235°C ± 5°C , 2 ± 0.5S