

## **WHEELCHAIR RESTRAINT SYSTEM**

**X-801-1 / X-801-2 / X-802-1**



***XINDER-TECH***

**[www.china-wheelchair-lift.com](http://www.china-wheelchair-lift.com)**

## 1. Introduction

- This wheelchair tie-down system is self-adjusting and self-tensioning, offering a quick and flexible solution to securing wheelchairs.
- The wheelchair tie-down system is particularly adequate as it is compact and can either be used with floor pockets, bolted to the carriage floor or mounted under a flip seat. Retractable and static lap/ shoulder belts are also provided for passenger comfort and safety. These products have already been exported to many countries, such as Australia, Austria, Spain, Italy, Philippine, Malaysia, New Zealand, Israel and so on.
- Wheelchair tie-down system is engineered as a complete security system. Every component is designed, engineered and tested to work together to provide safe transportation.
- Each wheelchair tie-down system is serialized and includes a warranty card to be filled-in with all customer information and returned to XINDER-TECH.
- XINDER considers safety as its single most important priority and ensures that all products are thoroughly tested to the industry's highest standards.
- **This wheelchair tie down system has passed the test of ISO 10542-2**, report NO is 3129630.50QS.
- Wheelchair restraint system X-802-1 has wider requirements for vehicle space, because the four round mounting bases are easier to be installed on the vehicle floor, and it can rotate 360° which will clear up the limitation for installation. It offers 360 degree rotation and the easiest, one-handed operation of any comparable product available today.

## 2. Advantages

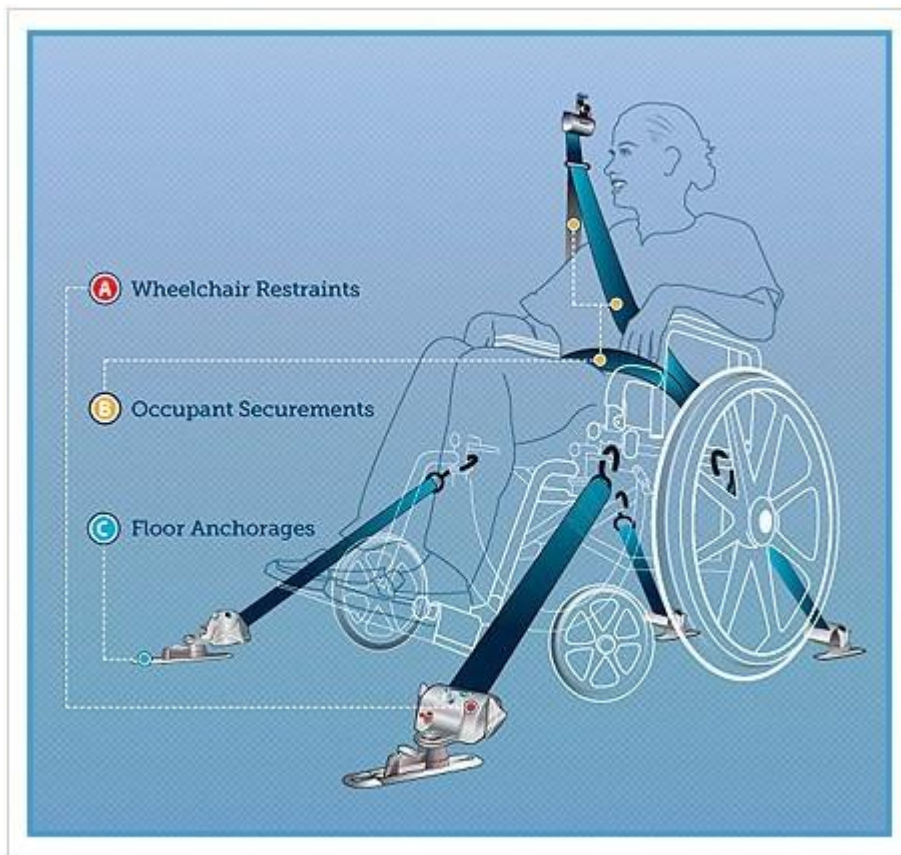
- There is self-adjusting and self-tensioning equipment which can offer an easy, quick and flexible solution to securing wheelchairs.
- Retractable and static lap/ shoulder belts are also provided for passenger comfort and safety.
- This tie down system is well designed even a small part, and it's a complete security system.
- **This wheelchair tie down system has passed the test of ISO 10542-2.**
- Wheelchair restraint system X-802-1 can rotate 360° which will clear up the limitation for installation. It offers 360 degree rotation and the easiest, one-handed operation of any comparable product available today.

## 3. PARTS LIST

A common wheelchair tie-down system **X-801-1** contains:

- 4 Wheelchair Restraints (Retractors)
- 1 Lap belt
- 4 Floor Anchorages (surface track)
- 8 end of surface track
- 1 Warranty card
- 1 Operating manual
- Option: Shoulder Belt





A common wheelchair tie-down system **X-801-2** contains:

- 4 Wheelchair Restraints (Retractors)
- 1 Lap belt
- 4 Floor Anchorages (cupped track)
- 8 end of cupped track
- 1 Warranty card
- 1 Operating manual
- Option: Shoulder Belt



A common wheelchair tie-down system **X-802-1** contains:

- 4 Retractors with Slide& Click Floor Anchorages
- 4 Round Tracks
- 1 Lap Belt
- 4 Mounting screws
- 1 Warranty card
- 1 Operating manual
- Option: Shoulder Belt



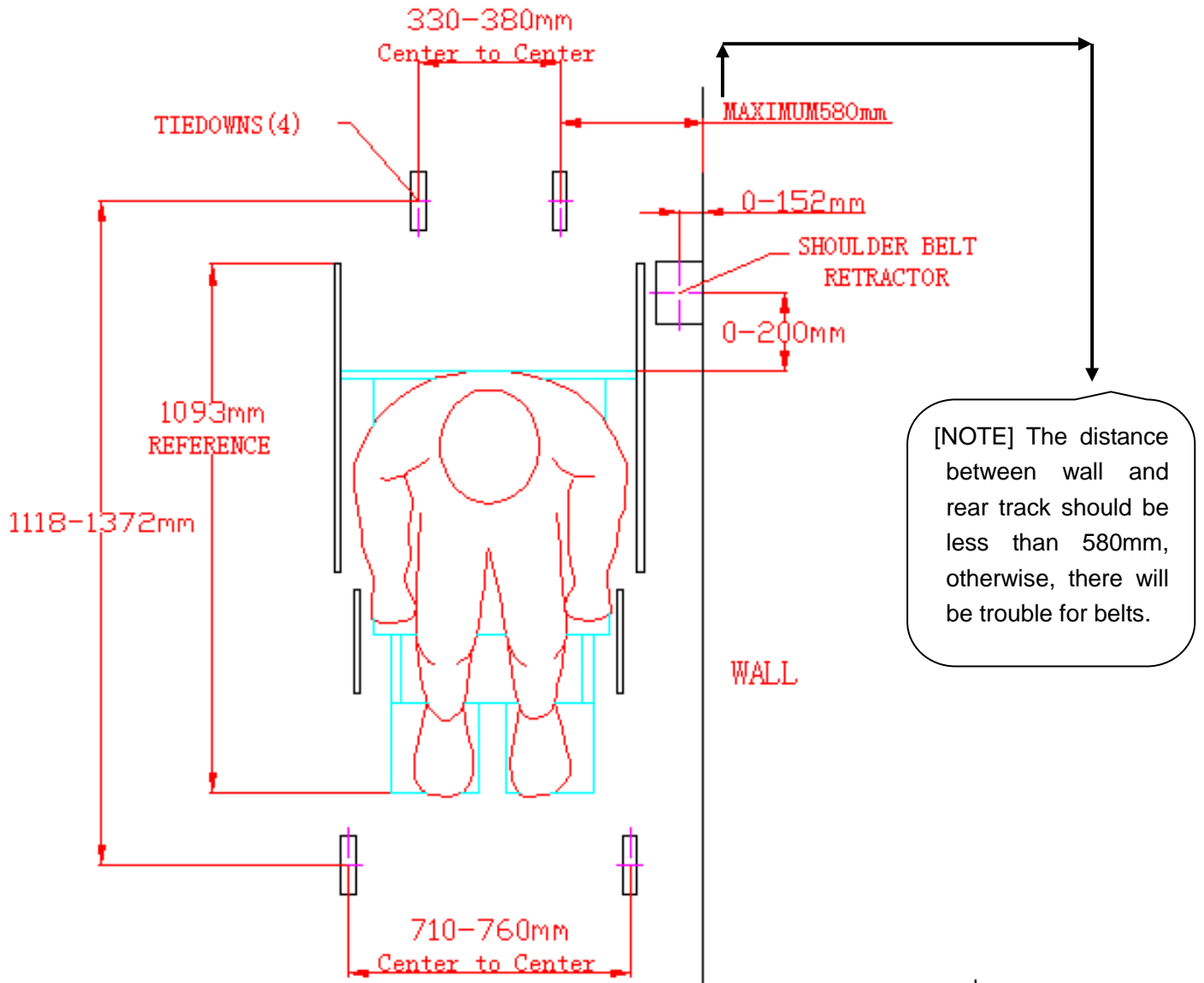
Note:

The shoulder belt is the option of wheelchair tie down system, which is not in the parts list.

If you need it, you should inform us and pay for it.

### 4. Installation Diagram

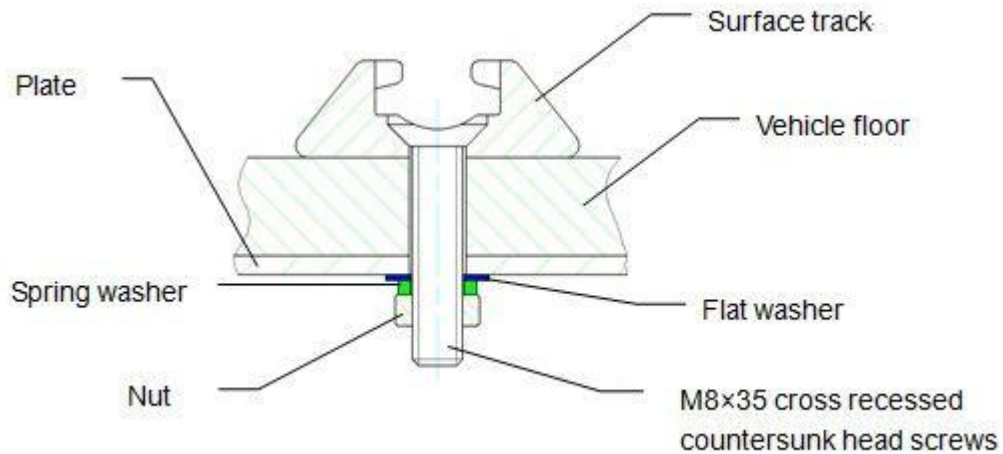
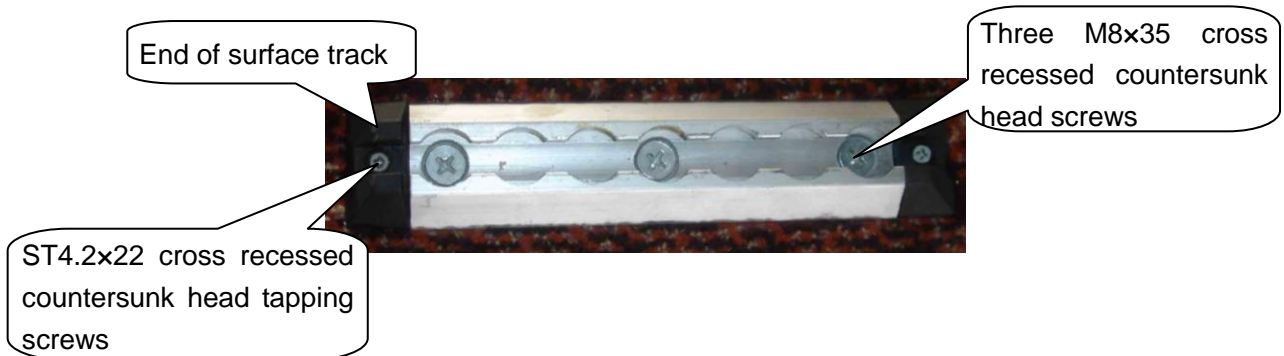
It is suggested to mount wheelchair restraint system as this figure. Sometimes these dimensions can be changed according actual situation.



## 5. INSTALLATION GUIDE

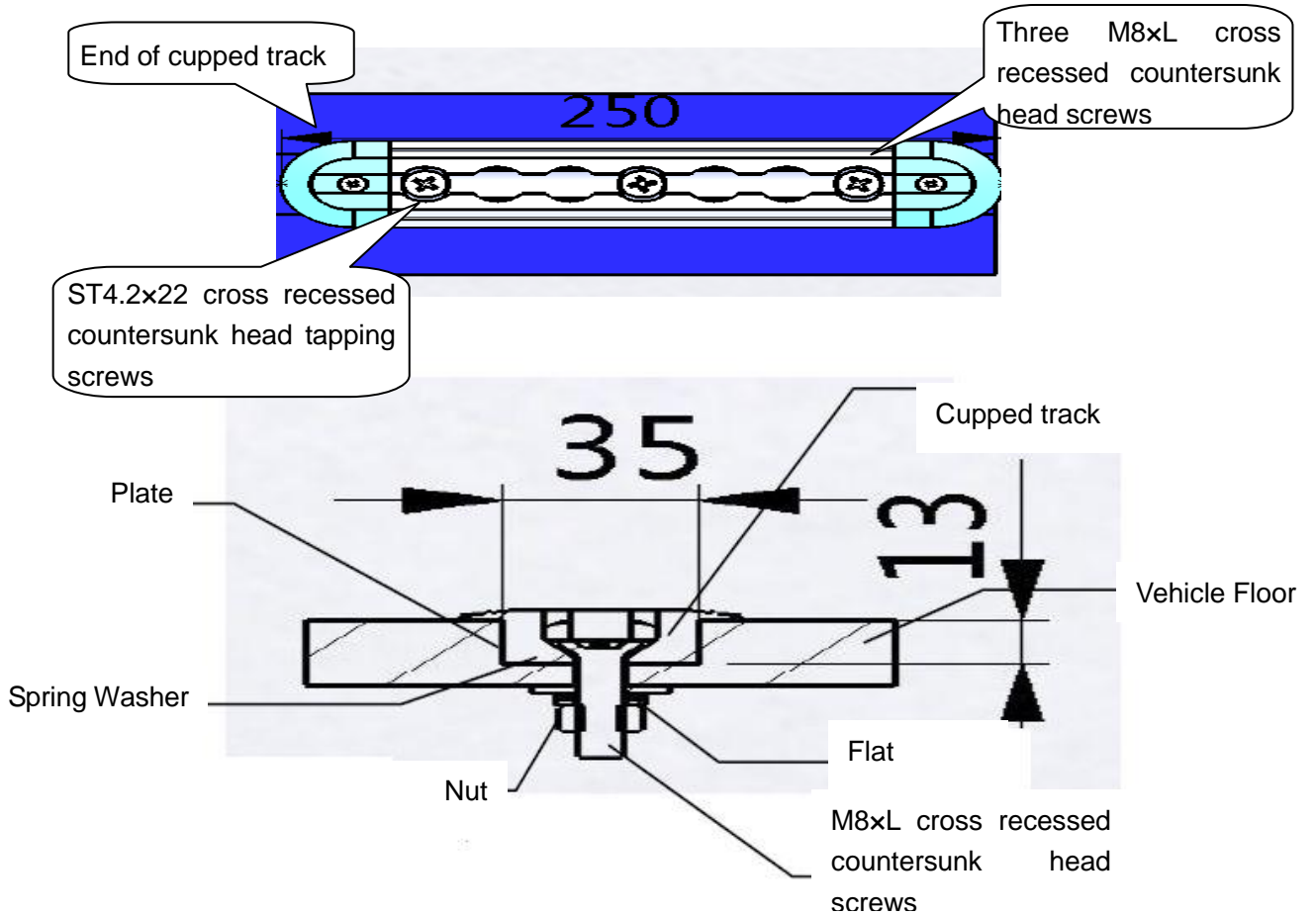
### 5.1 Mount Surface Track (X-801-1)

- Place tracks at right position;
- Mount and drill three holes of M8×35 cross recessed countersunk head screw;
- Cross the screw through track and hole;
- Put the plate, flat washer, spring washer and hexagon nut on screw orderly.

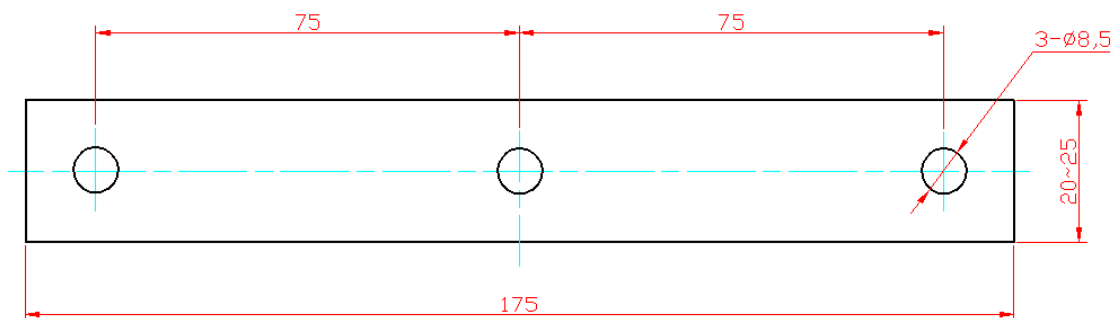


**5.2 Mount CuppedTrack (X-801-2)**

- Place tracks at right position;
- Mount and drill three holes of M8xL cross recessed countersunk head screw, and make groove as 35\*250\*14 mm;
- Cross the screw through track and hole;
- Put the plate, plat washer, spring washer and hexagon nut on screw orderly.



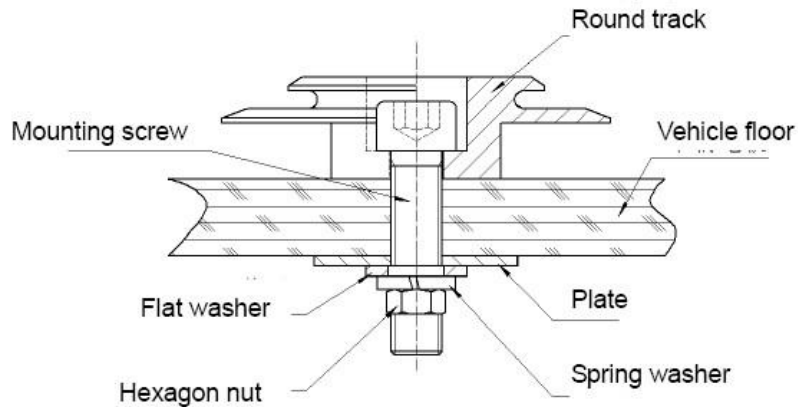
**[NOTE]** The base of vehicle floor can be installed vertically or parallel with the position of wheelchair. Sealing material can be used between the plate and vehicle floor if necessary. The plate should be self-provided, and its material is Q235 with thickness of 2mm.



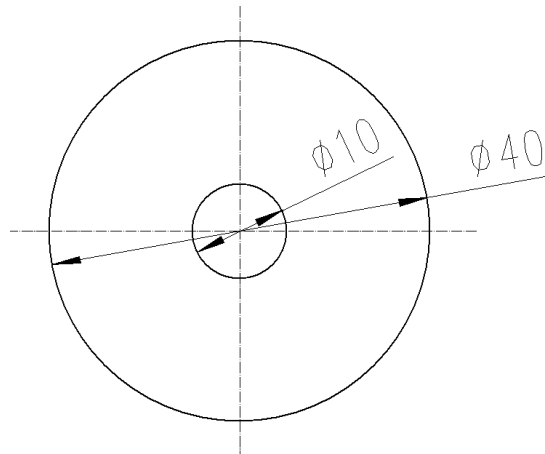


**5.3 Mount Round Track (X-802-1)**

- Place tracks at right position;
- Mark and drill a hole to put a hexagon socket head screw of M10×40;
- Cross the screw through track and hole;
- Put the plate, flat washer, spring washer and hexagon nut on screw orderly.



[NOTE] Sealing material can be used between plate and vehicle floor. The plate is self-prepared, and the material is 304 with thickness of 2mm. Detail specification can be seen from below figure.



## 6. Views of System



Front View (X-801-1)



Back View (X-801-1)



Retractor(X-801-2)



Cupped Track (X-801-2)



Retractor(X-802-1)



Retractor(X-802-1)

CHANGZHOU XINDER-TECH ELECTRONICS CO., LTD

3F B Jianshe Building, Hanjiang Rd, New North Zone, Changzhou Jiangsu China.

Tel: 0086-519-85122329 Fax: 0086-519-88226095

Web: [www.china-wheelchair-lift.com](http://www.china-wheelchair-lift.com) E-mail: [master@xinder.cn](mailto:master@xinder.cn) [cgr@xinder.cn](mailto:cgr@xinder.cn)