

XX-25126000 Planetary Series SINOMOTORS®

(12VDC STANDARD)

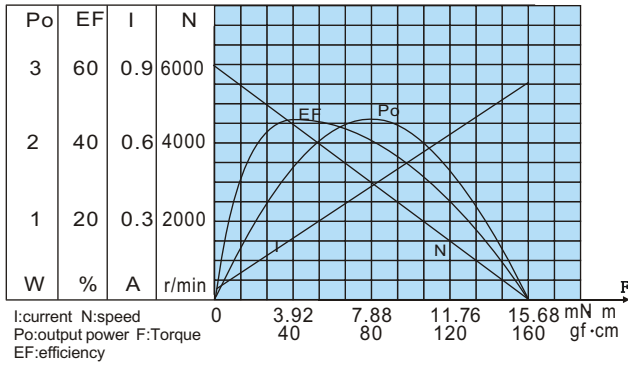
DC GEARED MOTOR

OUTPUT POWER: 1.2W(APPROX)

WEIGHT: 80~90g(APPROX)

Typical applications: Automat, electrical controlled valve, robot, door locks, auto shutter, water meter IC card, central heating IC card, automatic energy saving bath, aeromodelling, electronic locks, kind of finger-electroni lock.

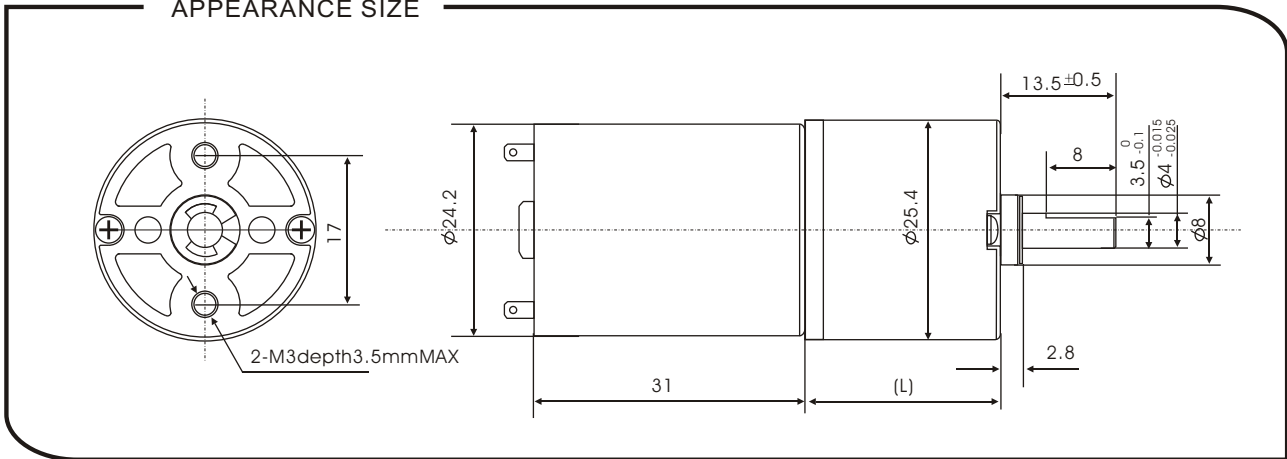
MOTOR CHARACTERISTICS



MOTOR TORQUE/SPEED/CURRENT

Rated voltage	12VDC
No load speed	6000r/min
No load current	100mA
Rated torque	40gf · cm 3.92mN · m
Rated current	0.3A
Rated speed	5300r/min
Stall torque	160gf · cm 15.68mN · m
Stall current	0.8A

APPEARANCE SIZE



GEARED MOTOR TORQUE/SPEED/CURRENT

Geared motor name	Rated Volt. V	No load		Load torque				At maximum efficiency		Output power W	Number of gear trains	Gearbox length "L" mm
		Current mA	Speed r/min	Current A	Speed r/min	Torque		Kgf · cm	N · m			
						Kgf · cm	N · m					
XX-25126000-4K	12	≤100	1500	≤0.3	1100	0.12	0.01	0.4	0.04	1.3	1	18
XX-25126000-16K	12	≤100	375	≤0.3	300	0.4	0.04	1.2	0.12	1.2	2	18
XX-25126000-22.5K	12	≤100	266	≤0.3	200	0.6	0.06	1.8	0.18	1.2	2	18
XX-25126000-64K	12	≤100	93	≤0.3	70	1.6	0.16	6.4	0.63	1.1	3	23
XX-25126000-90K	12	≤100	66	≤0.3	50	2.2	0.22	8.8	0.86	1.1	3	23
XX-25126000-107K	12	≤100	56	≤0.3	42	2.6	0.25	10.4	1.02	1.1	3	23
XX-25126000-256K	12	≤100	23	≤0.3	16.5	6	0.59	24	2.35	1.0	4	28
XX-25126000-304K	12	≤100	19.5	≤0.3	14	7.1	0.7	28	2.74	1.0	4	28
XX-25126000-361K	12	≤100	16.5	≤0.3	12	8.3	0.81	30	2.94	1.0	4	28
XX-25126000-428K	12	≤100	14	≤0.3	10	10	0.98	30	2.94	1.0	4	28
XX-25126000-509K	12	≤100	11.7	≤0.28	8	10	0.98	30	2.94	0.8	4	28
Packing Details	CTN size: 41X26XH23CM 100pcs/CTN				N.W. 11Kgs							