

## LED Flood Light Series



HM-LF10W



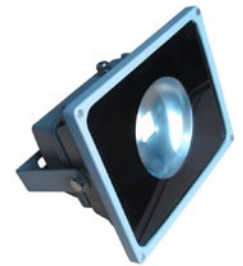
HM-LF20W



HM-LF30W



HM-LF50W



HM-LF50WA



HM-LF70W



HM-LF80W



HM-LF100W



HM-LF100WA

## Parameters

Model	Power	Luminous flux		Color temp	Input Voltage	Size (MM)
		Epistar	BridgeLux			
HM-LF10W	10W	850-940 LM	1000-1100 LM	3000-7000 K	AC85-265V / DC12V -24 V	115*85*90
HM-LF20W	20W	1700-1870 LM	2000-2210 LM	3000-7000 K	AC85-265V / DC12V -24 V	180*140*100
HM-LF30W	30W	2550-2800 LM	3000-3310 LM	3000-7000 K	AC85-265V / DC12V -24 V	235*185*145
HM-LF50W	50W	4250-4670 LM	5100-5520 LM	3000-7000 K	AC85-265V / DC12V -24 V	285*235*160
HM-LF50WA	50W	4250-4670 LM	5100-5520 LM	3000-7000 K	AC85-265V / DC 12 -24 V	285*235*160
HM-LF70W	70W	5950-6540 LM	7140-7730 LM	3000-7000 K	AC85-265V / DC12V -24 V	360*280*120
HM-LF80W	80W	6800-7480 LM	8160-8840 LM	3000-7000 K	AC85-265V / DC12V -24 V	360*280*120
HM-LF100W	100W	8500-9350 LM	10200-11000 LM	3000-7000 K	AC85-265V / DC12V -24 V	360*288*120
HM-LF100WA	100W	8500-9350 LM	10200-11000 LM	3000-7000 K	AC85-265V / DC12V -24 V	405*330*117

- 1, Certificates: CE, RoHS,
- 2, Warranty: 3 years,
- 3, Design dimmable available.
- 4, WaterProof Power supply

## Advantages

1. Colorful, good color, soft light.
2. Low power, long life.
3. Lamp compact, easy to hide or installation.
4. No heat radiation, enabling protection of the illuminated objects.
5. Toughened clear glass cover, fully waterproof and resistant to all environmental factors
6. Eco-friendly, no UV, IR, lead, mercury or air pollution
7. LED's long life, light emitting time of up to 5 million hours.
8. LED floodlights, small size, wide application and is not easily damaged.

## Advantages

Advertising signs, architectural lighting, wide pan, tennis courts, car parks, stadiums, piers, parks, trees, decorative lighting indoor scenes, sculptures and other green lighting projects.

