

SHENZHEN BRILLIANT CRYSTAL TECHNOLOGIC CO.,LTD.

**深 圳 市 彩 晶 科 技 有 限 公 司**

The specification for the following models :

**CJT05001**

<b>PROPOSED BY</b>		<b>APPROVED</b>
Design	Approved	

TEL:+86-755-29995238

FAX:+86-755-29459900

Http://www.cj86.com

E-mail:szcj86@gmail.com

Http://www.szcm-lcd.com

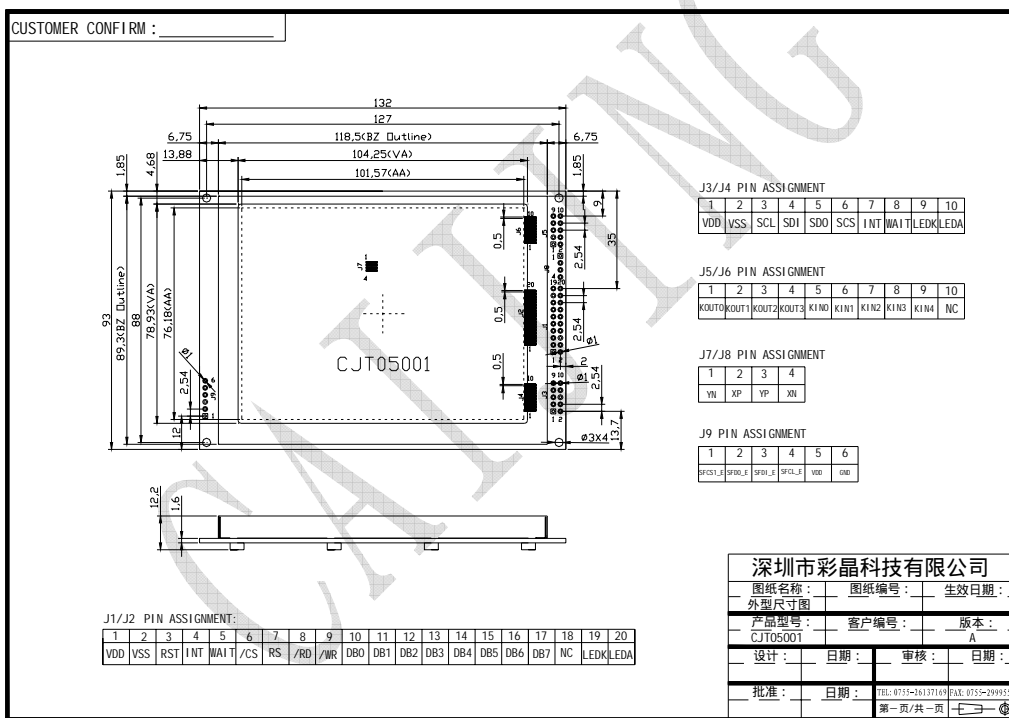
E-mail:szcj86@hotmail.com

地址：深圳市南山区西丽留仙洞工业区顺和达厂区 B 栋

1. Mechanical Specification

ITEM	STANDARD VALUE			UNIT
LCD size	5.0inch(Diagonal)			
Driver element	a-Si TFT active matrix			
Resolution	640 (RGB) X480 DOTS			--
MODULE DIMENSION	132.0 (W) X 93.0 (H) X 11.6 (T)			mm
VIEWING DISPLAY AREA	104.25 (W) X 78.93 (H)			mm
ACTIVE DISPLAY AREA	101.57 (W) X 76.18 (H)			mm
DOT PITCH	0.0529 (W) X 0.1587 (H)			mm
Color arrangement	RGB-stripe			
LED Backlight Color	White			
Backlight Input	DC +3.3	V	380	mA
Backlight Half-Lift Time	20,000			HR.
INPUT VOLAGE	DC +3.3V	V		mA
Weight	g			

2. Mechanical Diagram



## J1/J2 Pin assignment :

NO	SYMBOL	LEVEL	FUNCTION
1	VDD	3.3V	Supply voltage for logic(+3.3V)
2	VSS	0V	GND
3	RST	H/L	Reset Signal
4	INT	H/L	Interrupt select signal
5	WAIT	H/L	Wait signal
6	/CS	H/L	Chip select signal
7	RS	H/L	Data Type Selection
8	/RD	H/L	Read Signal
9	/WR	H/L	Write signal
10	DB0	H/L	Data BUS
11	DB1	H/L	Data BUS
12	DB2	H/L	Data BUS
13	DB3	H/L	Data BUS
14	DB4	H/L	Data BUS
15	DB5	H/L	Data BUS
16	DB6	H/L	Data BUS
17	DB7	H/L	Data BUS
18	NC	--	Not connect
19	LEDK	L	LED Back light Power0V
20	LEDA	H	LED Back light Power+3.3V

## J3/J4 Pin assignment :

NO	SYMBOL	LEVEL	FUNCTION
1	VDD	3.3V	Supply voltage for logic(+3.3V)
2	VSS	0V	GND
3	SCL	H/L	SPI clock
4	SDI	H/L	SPI data input
5	SDO	H/L	SPI data output
6	SCS	H/L	SPI chip select
7	INT	H/L	Interrupt select signal
8	WAIT	H/L	Wait signal
9	LEDK	L	LED Back light Power0V
10	LEDA	H	LED Back light Power+3.3V

J5/J6 Pin assignment :

NO	SYMBOL	LEVEL	FUNCTION
1	KOUT0	H/L	Keypad strobe line
2	KOUT1	H/L	Keypad strobe line
3	KOUT2	H/L	Keypad strobe line
4	KOUT3	H/L	Keypad strobe line
5	KIN0	H/L	Keypad data line
6	KIN1	H/L	Keypad data line
7	KIN2	H/L	Keypad data line
8	KIN3	H/L	Keypad data line
9	KIN4	H/L	Keypad data line
10	NC	--	Not connect

J7/J8 Pin assignment :

NO	SYMBOL	LEVEL	FUNCTION
1	YN	I	电阻式触摸板下边端点 YD
2	XP	I	电阻式触摸板左边端点 XL
3	YP	I	电阻式触摸板上边端点 YU
4	XN	I	电阻式触摸板右边端点 XR

J9 Pin assignment :

NO	SYMBOL	LEVEL	FUNCTION
1	SFCS1_E	H/L	External Flash/ROM SPI Chip Select 1
2	SFD0_E	H/L	External Flash/ROM SPI Data Output
3	SFDI_E	H/L	External Flash/ROM SPI Data Input
4	SFCL_E	H/L	External Serial Flash/ROM Clock
5	VDD	H/L	External Serial Flash/ROM power
6	GND	H/L	External Serial Flash/ROM power ground

#### 4. Absolute Maximum Ratings

ITEM	SYMBOL	MIN.	TYPE	MAX.	UNIT
OPERATING TEMPERATURE	TOP	0/-20	--	+50/+70	
STORAGE TEMPERATURE	TST	-10/-30	--	+60/+80	
INPUT VOLTAGE	VI	3.1	3.3	3.5	V
SUPPLY VOLTAGE FOR LOGIC	VDD-VSS	--	3.3	3.5	V
STATIC ELECTRICITY	Be sure that you are grounded when handing LCM.				