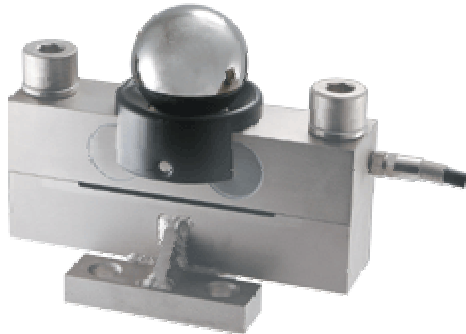




Bridge Load Cell

Model: GF-1



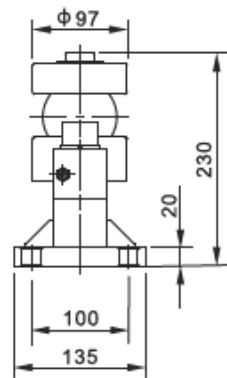
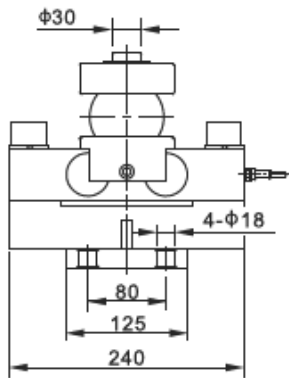
Materials: Alloy Steel, Stainless Steel

Unique bridge structure, cup and steel ball mounted.
Self-resetting and centering, good side force resistance and shock resistance.

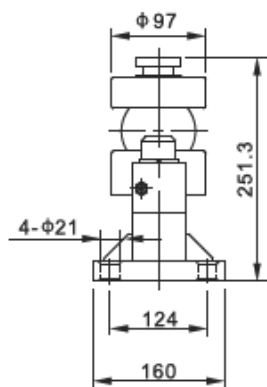
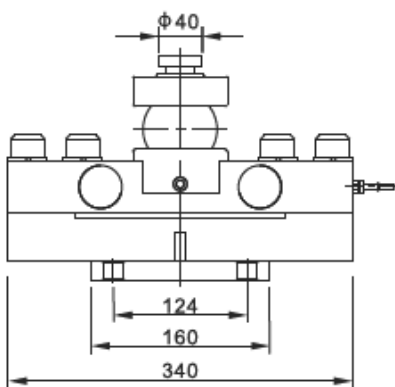
Moistureproof sealed, ideal for hostile environment.

Simple to install, easy to use, good interchangeability.

Suitable for electronic truck scale, railroad scale, hopper scale and various special scales.



量程 **Capacity: 10,15,20,25,30t**



重量 **Capacity: 50 t**

Specification	
Rated Output	2.00±0.010mv/v
Nonlinearity	±0.05%FS
Hysteresis	±0.05%FS
Repeatability	±0.02%FS
Creep(30 minutes)	±0.02%FS
Zero balance	±1.00%FS
Temperature effect on zero	±0.02%FS/10°C
Temperature effect on output	±0.02%FS/10°C
Input resistance (Ω)	750±10
Output resistance (Ω)	700±5
Insulation resistance	≥5000MΩ
Excitation voltage	10V(DC/AC)
Compensated temperature range	-10~+50°C
Operating temperature range	-20~+60°C
Safe overload	120%FS
Cable	Φ5.4X6 M
Cable color code	Input: red+ black- Output: green+ white-