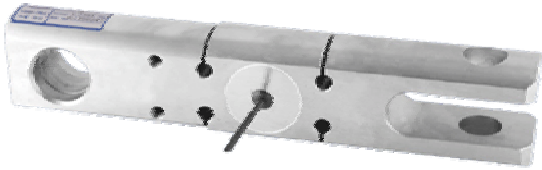


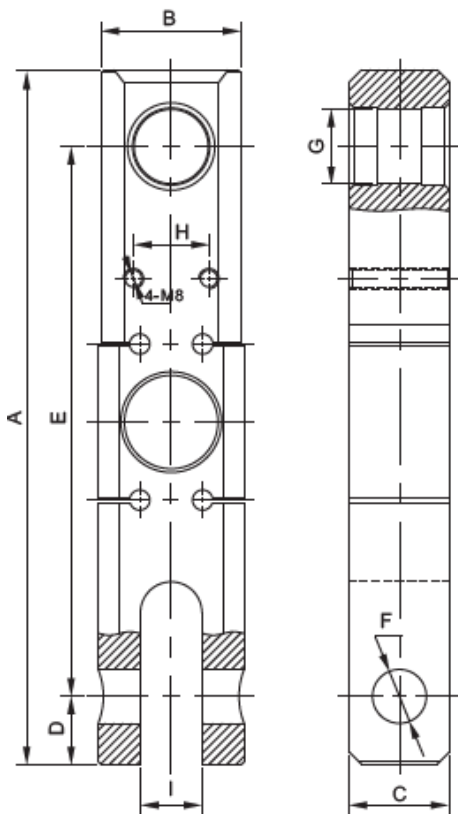


Tension Load Cell Model: ET-10



Material: Alloy Steel

Crane scale load cell, with high quality alloy steel material
Optimized structure and high accuracy, small corner error
Suitable for various high precision crane scales



Specification

Rated Output (mV/V)	2.00±0.005
Nonlinearity	±0.02%FS
Hysteresis	±0.02%FS
Repeatability	±0.01%FS
Creep(30 minutes)	±0.02%FS
Zero balance	±1.00%FS
Temperature effect on zero	±0.02%FS/10°C
Temperature effect on output	±0.02%FS/10°C
Input resistance (Ω)	385±10
Output resistance (Ω)	350±3
Insulation resistance	≥5000MΩ
Excitation voltage	10V(DC/AC)
Compensated temperature range	-10~+50°C
Operating temperature range	-20~+60°C
Safe overload	120%FS
Cable	Φ5.4* 0.5m
Cable color code	Input: red+ black- Output: green+ white-

Capacity	Size mm								
	A	B	C	D	E	F	G	H	I
t									
3	276.0	55.0	40.0	27.0	218.5	21.4	29.5	30.0	24.4
5	293.0	60.0	45.0	28.0	233.0	25.0	35.6	30.0	26.6
10	323.0	76.0	55.0	32.5	250.0	32.0	40.0	30.0	32.5