



Column Load Cell

Model: CP-1



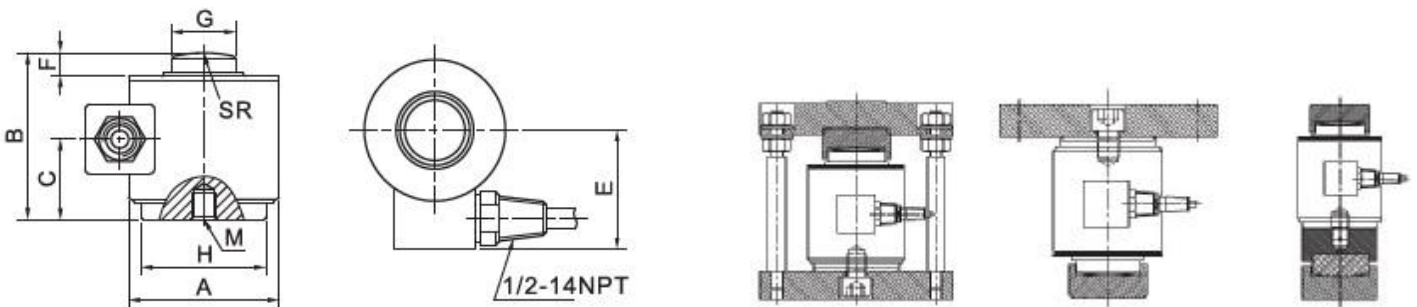
Specification	
Rated Output	1.75±0.005; 2.00±0.005;
Nonlinearity	±0.02%FS
Hysteresis	±0.02%FS
Repeatability	±0.01%FS
Creep(30 minutes)	±0.02%FS
Zero balance	±1.00%FS
Temperature effect on zero	±0.02%FS/10°C
Temperature effect on output	±0.02%FS/10°C
Input resistance (Ω)	450±5
Output resistance (Ω)	480±3
Insulation resistance	≥5000MΩ
Excitation voltage	10V(DC/AC)
Compensated temperature range	-10~+50°C
Operating temperature range	-20~+60°C
Safe overload	120%FS
Cable	Φ6* 9 (12)m
Cable color code	Input: red+ black- Output: green+ white-

Material: Alloy Steel Stainless Steel

Column type, hermetically sealed structure, with argon-arc welded, IP68

Compression with upper load head bearing, fast dynamic response, strong capability of anti-overload, simple to install, easy to use

Suitable for electronic truck scale, dynamic railway scale, big capacity for hopper scale, and etc



Capacity		Size mm								M		
t	Klb	A	B	C	E	F	G	H	SR	Inch	mm	DP
5-20	10-50	75.0	83.0	32.5	64.0	10.0	31.8	62.0	125.0	1/2-20	M12*1.75	13.0
45	100	100.6	127.0	54.6	86.0	14.0	59.0	88.6	152.0	3/4-16	M18*1.5	18.0
90-180	200-400	150.6	184.5	92.0	108.0	26.0	80.0	134.4	400.0	3/4-16	M20*1.5	25.0
225	500	164.0	229.0	92.0	108.0	26.0	93.7	148.0	400.0	3/4-16	M20*1.5	25.0
450	1000	177.0	304.8	117.0	115.0	26.0	139.7	165.1	1143.0	3/4-16	M20*1.5	32.0