



Measured Performance - Improved Security

www.importsecurity.com

# Global Security Verification Report

## NINGBO JIAMING PRINTING CO.,LTD

Registration Number	: A17348-218430
Company	: NINGBO JIAMING PRINTING CO.,LTD
Date of Verification	: 17-Dec-2012
Auditor(s) Name	: ray lei

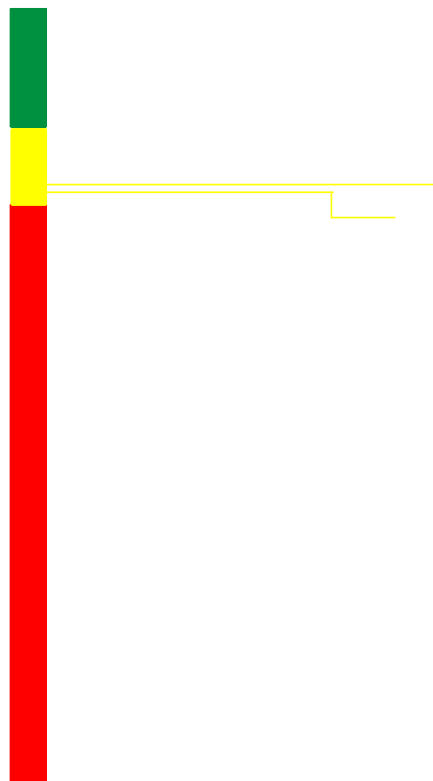
### Overall Rating

Participating Facilities : 12019

**Low Risk Priority (86 – 100)**  
Meet Expectations.

**Medium Risk Priority(76 – 85)**  
Further Improvement Needed.

**High Risk Priority(0 – 75)**  
Urgent Action Required.



Facility Score **78**  
Global Score **77**



## Company Profile

Company name	NINGBO JIAMING PRINTING CO.,LTD		
Contact name	Mr.Zhu Yonghong		
Address 1	He Dong Industrial, He Xi Industrial XiaYing Town,		
Address 2	YinZhou District		
City	Ningbo		
State	Zhejiang		
Country	China	Postal Code	315000
Phone	86-574-87589788		
Fax	86-574-87589588		
Email	bgf0574@163.com		
Website	Nil.		
<b>Number of employees</b>			
Permanent	37		
Temporary	0		
Overseas / Migrant	0		
Total	37		

## Business Overview

Industry	Hardlines		
Key / Main product	Gift Boxes, Gift Bags		
Country of operation	China		
	Yes	No	Not Applicable
Participation in security initiatives		●	
Description of security initiative	Nil.		

## Facility Structure

<b>Number of buildings</b>	
Distribution	0
Production	2
Warehouse	0
Container yards	0
Other	0
Total	2
Facility size	3900M. Sq.
Facility size outside grounds	7000M. Sq.
Warehouse customs bonded	NO
Free trade zone	NO



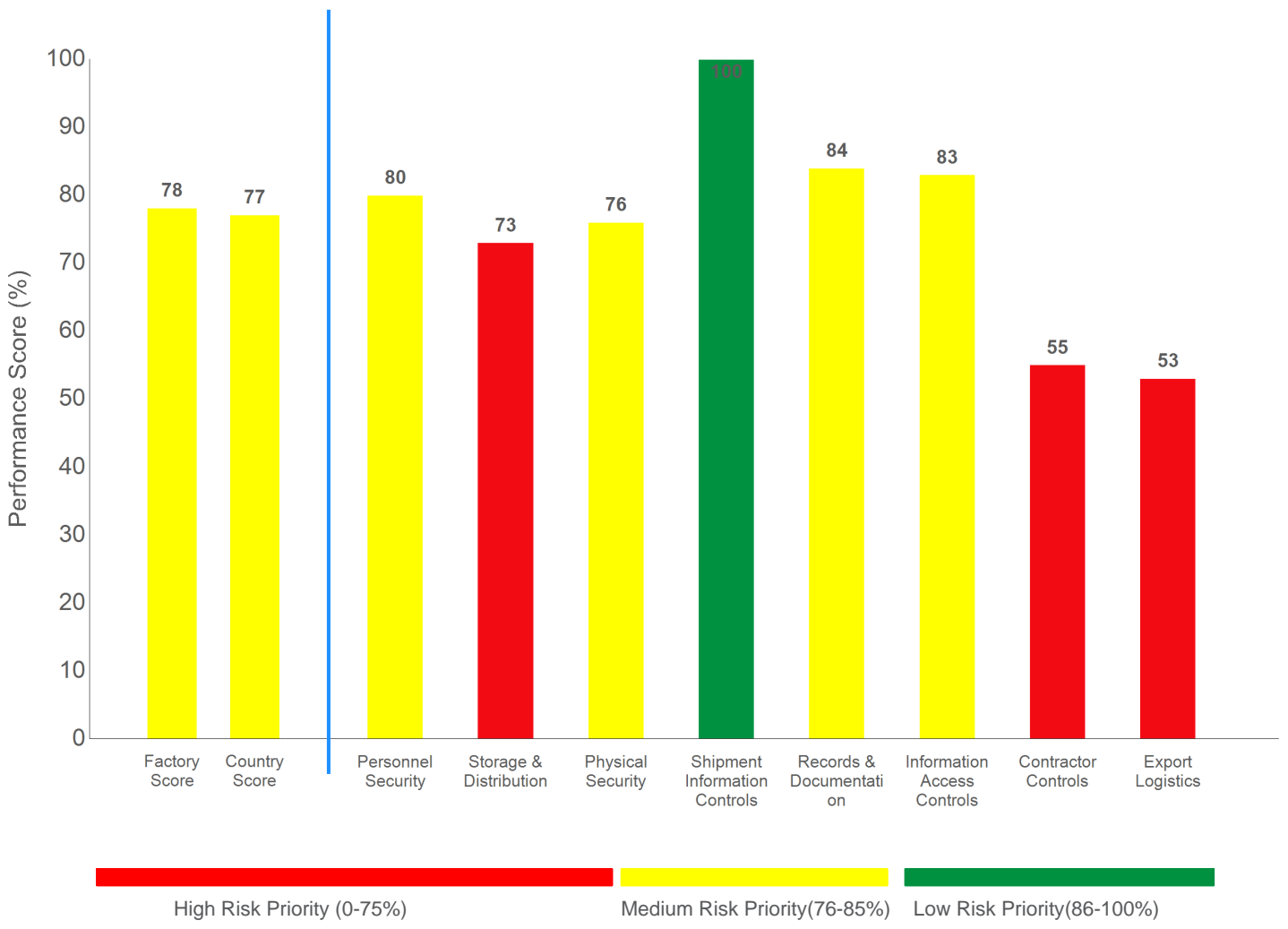
**Logistics/Transportation for shipments to US**

<b>Trucks owned By Company</b>	No
<b>Percent of goods exported to US</b>	
<b>By air</b>	0
<b>By sea</b>	100
<b>By rail</b>	0
<b>By truck</b>	0
<b>Description of "other" buildings</b>	
<b>Export Logistics</b>	
<b>Facility responsible for the relationships with the following type of logistics :</b>	
<b>Air</b>	Never
<b>Sea</b>	Always
<b>Rail</b>	Never
<b>Land Carriers</b>	Always
<b>Consolidators</b>	Never
<b>Freight forwarders</b>	Always
<b>NVOCC</b>	Never
<b>Other 3rd party logistics providers</b>	Always



# I. Executive Summary

Top Critical Findings	Global Freq. of Compliance %
Only selected incoming and outgoing cargo vehicles are checked.	80%



## Contact Us

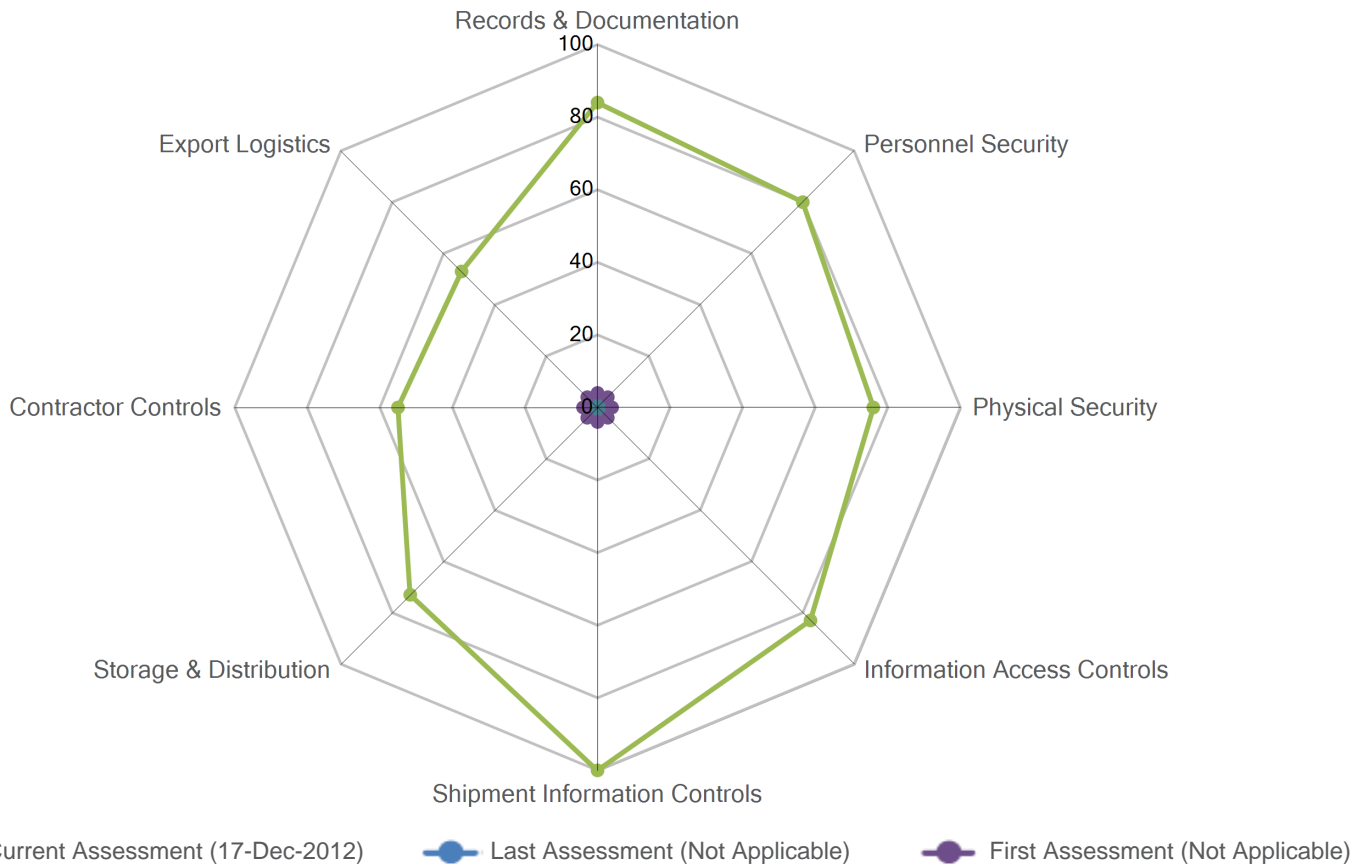
Send Us a **secure** message. Complete the GSV on-line Compliments and Complaints feedback form 

[Go Now](#)

## II. Performance Trend Analysis

### Why Performance Trend Analysis Matter?

Investors in the international supply chain look closely at trends to make a judgment about the current and future direction of a business partners performance. It is often easier to determine how best to support the development and implementation of measures for enhancing business performance, by looking at a chart of performance trends over a period of time, in relation to the performance traits of similar such enterprises operating within like industries. Mutual understanding of cause and effect is an important first step toward achieving a shared objective of continuously enhancing performance and building stronger business partner relationships.



Section Name	Current	Last	First	Change (Current-Last)	Change (Current-First)
Records & Documentation	84	Not Applicable	Not Applicable	Not Applicable	Not Applicable
Personnel Security	80	Not Applicable	Not Applicable	Not Applicable	Not Applicable
Physical Security	76	Not Applicable	Not Applicable	Not Applicable	Not Applicable
Information Access Controls	83	Not Applicable	Not Applicable	Not Applicable	Not Applicable
Shipment Information Controls	100	Not Applicable	Not Applicable	Not Applicable	Not Applicable
Storage & Distribution	73	Not Applicable	Not Applicable	Not Applicable	Not Applicable
Contractor Controls	55	Not Applicable	Not Applicable	Not Applicable	Not Applicable
Export Logistics	53	Not Applicable	Not Applicable	Not Applicable	Not Applicable
<b>Overall Score</b>	<b>78</b>	<b>Not Applicable</b>	<b>Not Applicable</b>	<b>Not Applicable</b>	<b>Not Applicable</b>

▲ Advancers   ■ Constant   ▼ Decliner

### Contact Us

Send Us a **secure** message. Complete the GSV on-line Compliments and Complaints feedback form Go Now



### III Key Strengths and Challenges

Facility Strengths	Global Freq. of Compliance%
Guards or security personnel with no other assignments monitor CCTVs.	40%
There is a system in place to suspend a log in user ID after three failed access attempts	41%
Security guidelines for hiring are evaluated periodically to ensure their effectiveness	48%
The facility has documented security improvement action plan summarizing identified vulnerabilities and their relevant corrective actions	49%
The facility has documented procedure and assessment reports to conduct periodic security checks to ensure that security procedures related to Contractor Controls are being performed properly	53%
The facility has documented procedure and assessment reports to conduct periodic security checks to ensure that security procedures related to personnel security are being performed properly	57%
New employee orientation includes computer security	59%
The facility has a process in place requiring all personnel to participate in the security awareness program	59%
The facility has a policy that requires that all security procedures be documented	59%
The facility has a procedure for contractors to report security violations to the company's management	60%

Facility Challenges	Global Freq. of Compliance%
There is no communication process in place between the central security office and the exterior guard posts	92%
Employees' entries and exits are not recorded	89%
There is no full-time designated system administrator within the facility to set up the user IDs	85%
For conveyance entries/exits, logs are not maintained with truck license information	84%
There is no positive identification process for recording all vendors and repair personnel and facility does not have a written procedure to challenge, identify, and remove unauthorized/unidentified persons.	84%
The facility do not use Closed Circuit Television (CCTV) or another surveillance method to monitor activity in all sensitive areas within the facility.	81%
Only selected incoming and outgoing cargo vehicles are checked.	80%
There are no security controls in place to prevent the introduction of foreign materials at point of loading	77%
The inside and outside of the facility including around entrances and exits, cargo handling and storage areas, fence lines and parking areas do not have adequate lighting.	70%
For conveyance entries/exits, records are not maintained for manifest check	66%
Photo identification is not required to some of the visitors.	66%
When selecting the contractors used by the facility, the facility does not consider the contractor's corporate history	66%

#### Contact Us

Send Us a **secure** message. Complete the GSV on-line Compliments and Complaints feedback form

[Go Now](#)



## Top 10 Strengths For Hardlines Industry

Strengths	Facility Performance
The facility has procedures for identifying which employees are allowed access to automated systems.	C
All full outgoing containers/trailers or trucks and vans are sealed.	C
All containers and trucks are checked for tampering, false compartments, and other evidence of unauthorized access before loading	C
The facility has designated a company official responsible for conveyance/transport security	C
For conveyance entries/exits, logs are maintained with driver's name	C
The facility has designated a company official responsible for personnel security	C
The facility has written personnel security guidelines for hiring	C
The facility has designated a company official responsible for plant security	C
Company identification is required for entry of personnel	C
The facility has a process for examining and verifying an applicant's official identification	C

## Top 10 Strengths For China

Strengths	Facility Performance
The facility has procedures for identifying which employees are allowed access to automated systems.	C
The facility has designated a company official responsible for conveyance/transport security	C
All full outgoing containers/trailers or trucks and vans are sealed.	C
All containers and trucks are checked for tampering, false compartments, and other evidence of unauthorized access before loading	C
For conveyance entries/exits, logs are maintained with driver's name	C
The facility has designated a company official responsible for personnel security	C
The facility has designated a company official responsible for plant security	C
The facility has written personnel security guidelines for hiring	C
Company identification is required for entry of personnel	C
The facility has a process for examining and verifying an applicant's official identification	C

<b>C</b>	Compliance	<b>NC</b>	Non Compliance
----------	------------	-----------	----------------



## Top 10 Challenges For Hardlines Industry

Challenges	Facility Performance
Reference checks are not conducted to all applicants	NC
When selecting the contractors used by the facility, the facility does not consider the hiring practices of some of the contractors.	NC
Employment history checks are not conducted to all applicants.	NC
When selecting the contractors used by the facility, the facility does not consider the financial stability of some of the contractors.	NC
The facility does not have a process in place requiring all personnel to participate in the security awareness program	C
The facility does not have a documented procedure for contractors to report security violations to the facility management.	C
When broken seals or cargo hold locks are discovered, there is no examination of the container's/trailer's contents	C
New seal numbers in case of replacement are not recorded for outgoing containers/trailers (including trucks and closed vans).	C
For conveyance entries/exits, records are not maintained for manifest check	NC
Damaged seals are not immediately replaced on outgoing containers/trailers (including trucks and closed vans).	C

## Top 10 Challenges For China

Challenges	Facility Performance
Reference checks are not conducted to all applicants	NC
When selecting the contractors used by the facility, the facility does not consider the hiring practices of some of the contractors.	NC
Employment history checks are not conducted to all applicants.	NC
When selecting the contractors used by the facility, the facility does not consider the financial stability of some of the contractors.	NC
For conveyance entries/exits, records are not maintained for manifest check	NC
When selecting the contractors used by the facility, the facility does not consider the contractor's corporate history	NC
The facility does not have a documented procedure for contractors to report security violations to the facility management.	C
The facility does not have a process in place requiring all personnel to participate in the security awareness program	C
Photo identification is not required to some of the visitors.	NC
When broken seals or cargo hold locks are discovered, there is no examination of the container's/trailer's contents	C

<b>C</b>	Compliance	<b>NC</b>	Non Compliance
----------	------------	-----------	----------------

### Contact Us

Send Us a **secure** message. Complete the GSV on-line Compliments and Complaints feedback form

[Go Now](#)

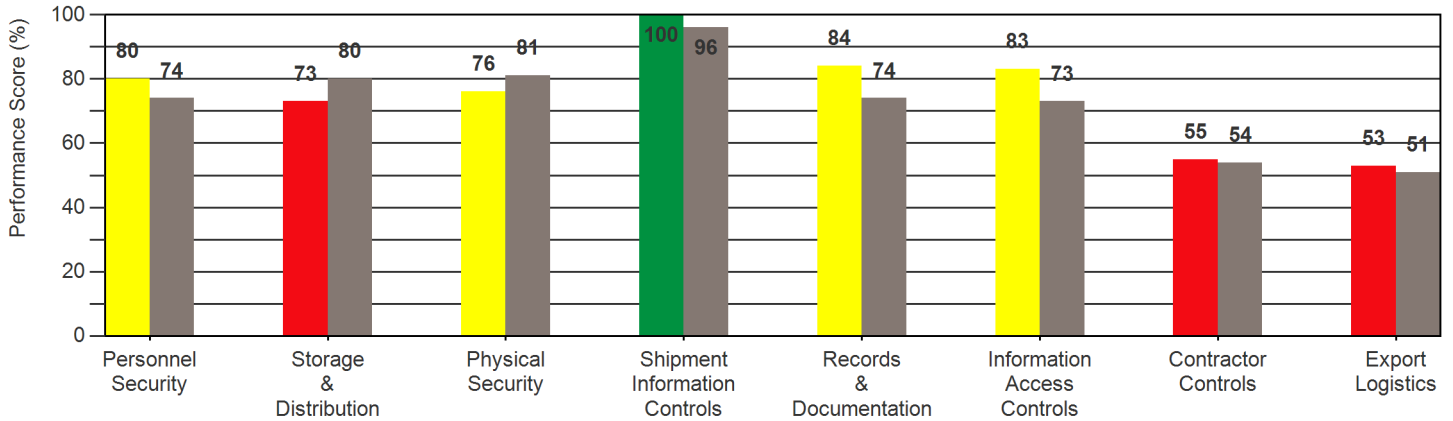


## IV. Comparison Benchmark

### Global Average :

Total Number of Facilities : 12019

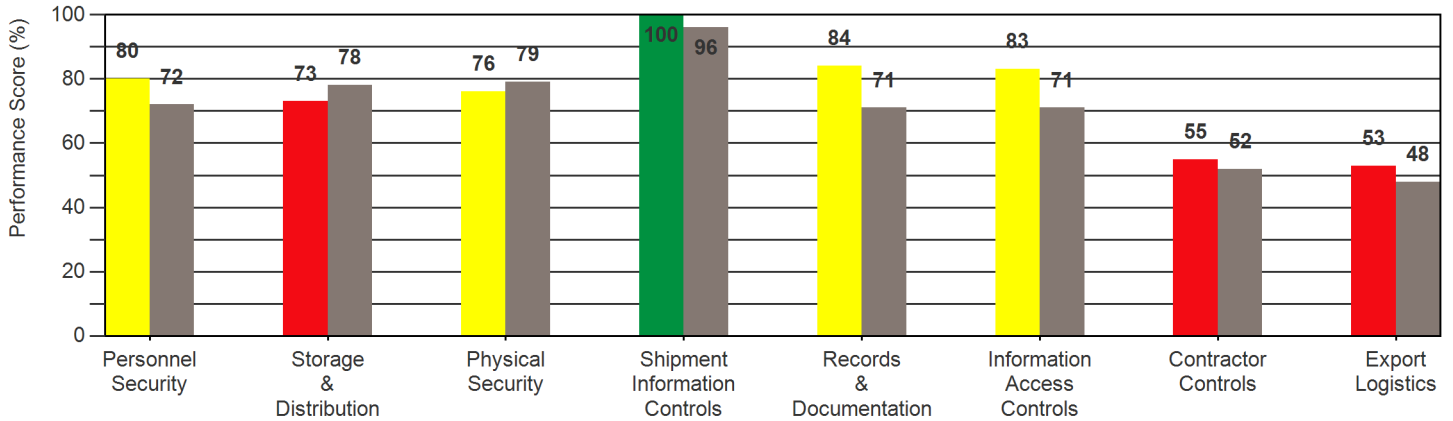
Average Overall Score : 77



### Hardlines Industry Average :

Total Number of Facilities : 3509

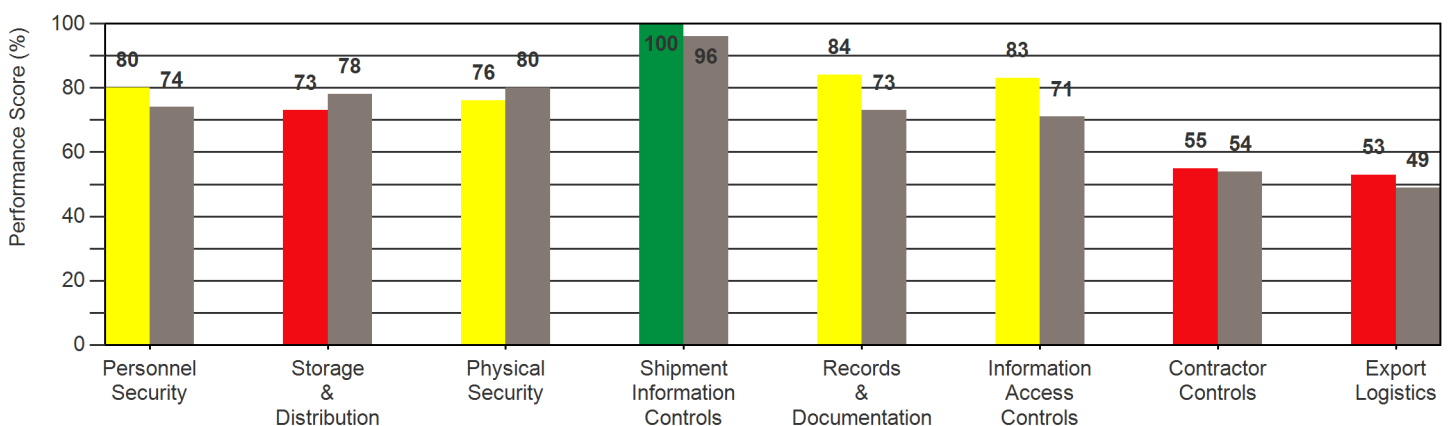
Average Overall Score : 76



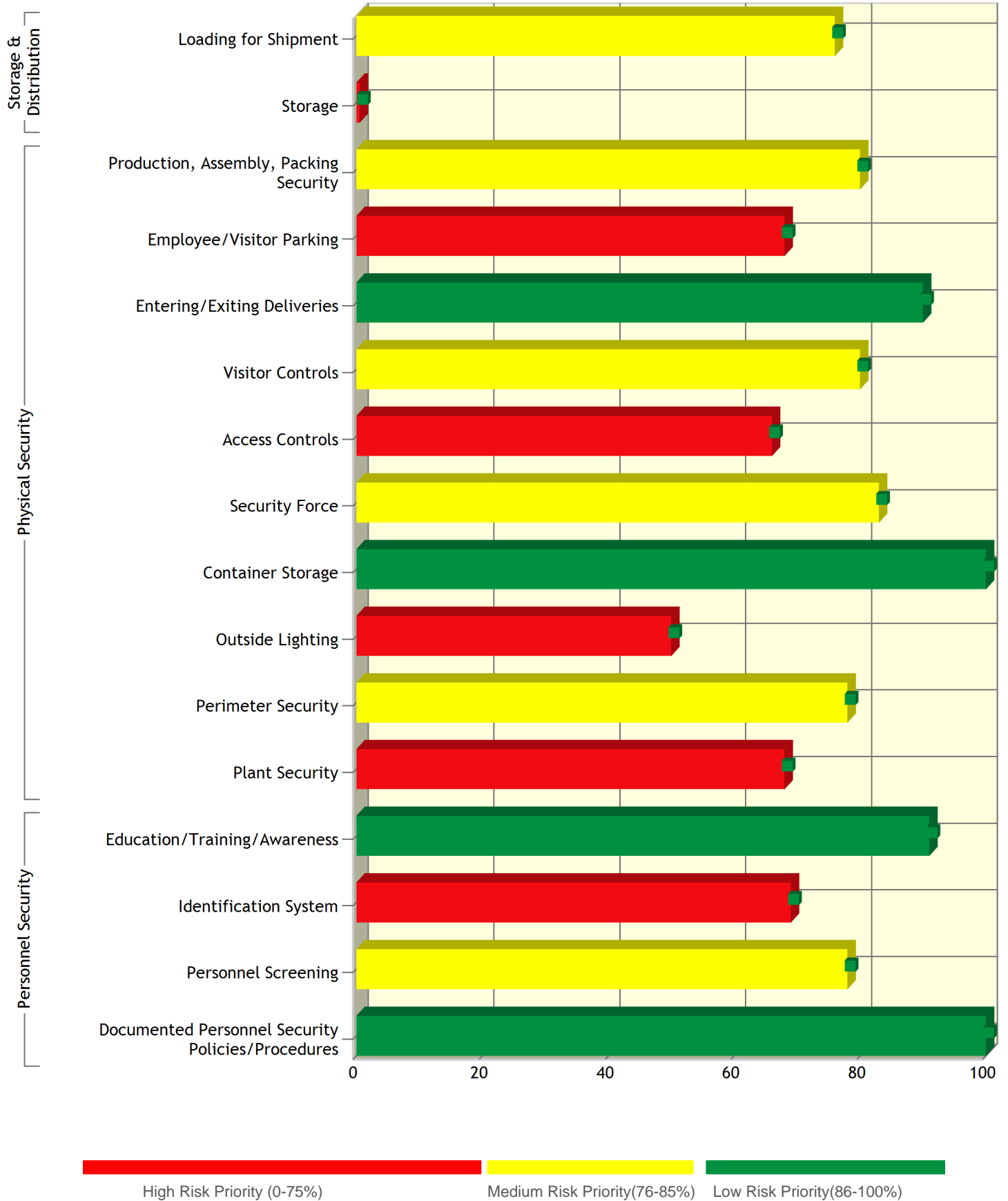
### China Average :

Total Number of Facilities : 8573

Average Overall Score : 77



## V. Sub Section Outcomes





## VI. Facility Score Card

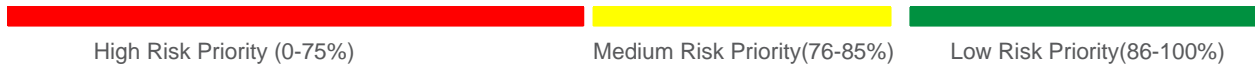
Security Sections	Subsection Score (0-100)	Section Score (0-100)
<b>Personnel Security</b>		<b>80</b>
• Documented Personnel Security Policies/Procedures	100	
• Personnel Screening	78	
• Identification System	69	
• Education/Training/Awareness	91	
<b>Storage &amp; Distribution</b>		<b>73</b>
• Storage	0	
• Loading for Shipment	76	
<b>Physical Security</b>		<b>76</b>
• Plant Security	68	
• Perimeter Security	78	
• Outside Lighting	50	
• Container Storage	100	
• Security Force	83	
• Access Controls	66	
• Visitor Controls	80	
• Entering/Exiting Deliveries	90	
• Employee/Visitor Parking	68	
• Production, Assembly, Packing Security	80	
<b>Shipment Information Controls</b>		<b>100</b>
<b>Records &amp; Documentation</b>		<b>84</b>
<b>Information Access Controls</b>		<b>83</b>
<b>Contractor Controls</b>		<b>55</b>
<b>Export Logistics</b>		<b>53</b>
<b>OVERALL SCORE</b>		<b>78</b>



## VII. Opportunities for Improvement

**⚠ Enhancements identified within this section are Critical to meeting US Customs & Border Protection Minimum foreign manufacturer security criteria**

### Performance Rating



#### 80% Section: Personnel Security

##### SubSection: Personnel Screening

International Supply Chain Security Requirements & Criteria	
A process must be in place to screen prospective employees and to periodically check current employees	
Consistent with national regulations, background checks and investigations should be conducted for prospective employees	
Periodic checks and reinvestigations for existing employees should be performed based on cause and/or the sensitivity of the employee's position	
Exceptions Noted:	Global Freq. of Compliance %
• Employment history checks are not conducted	49 %
• Reference checks are not conducted	40 %
• Periodic and follow-up background checks are not conducted on employees based on circumstances and/or sensitivity/scope of employee responsibility.	43 %
<i>No periodic, follow-up background check conducted to employees.</i>	

##### SubSection: Identification System

International Supply Chain Security Requirements & Criteria	
An employee identification system must be in place for positive identification and access control purposes	
Employees should only be given access to those secure areas needed for the performance of their duties	
Exceptions Noted:	Global Freq. of Compliance %
• IDs are not required to access restricted areas <i>The employee and visitor could enter the restricted area without checking.</i>	55 %
• IDs do not specify access for loading/unloading/packing dock areas <i>The employee and visitor could enter the restricted area without checking.</i>	54 %
• Guards do not check employees ID to monitor access to the restricted areas <i>Guards did not monitor access to the restricted area by checking employee ID.</i>	39 %

##### SubSection: Education / Training / Awareness

International Supply Chain Security Requirements & Criteria	
A threat awareness program should be established and maintained by security personnel to recognize and foster awareness of the threat posed by terrorists at each point in the supply chain	
Exceptions Noted:	Global Freq. of Compliance %
• Periodic updated training covering security awareness is not required	49 %

#### 73% Section: Storage & Distribution

Contact Us

Send Us a **secure** message. Complete the GSV on-line Compliments and Complaints feedback form

Go Now



### SubSection: Storage

International Supply Chain Security Requirements & Criteria	
<b>Exceptions Noted:</b>	<b>Global Freq. of Compliance %</b>
<ul style="list-style-type: none"> <li>The facility do not have fencing or other barrier materials to enclose cargo handling and storage areas to prevent unauthorized access.</li> </ul>	54 %
<i>No fixed fence was used for loading/unloading area.</i>	

### SubSection: Loading for Shipment

International Supply Chain Security Requirements & Criteria	
<b>Container integrity must be maintained to protect against the introduction of unauthorized material/person(s)</b>	
<b>Procedures must be in place for reporting and neutralizing unauthorized entry into containers or container storage areas</b>	
<b>Employees should only be given access to those secure areas needed for the performance of their duties</b>	
<b>Procedures must be in place to identify, challenge, and address unauthorized/unidentified persons</b>	
<b>Exceptions Noted:</b>	<b>Global Freq. of Compliance %</b>
<ul style="list-style-type: none"> <li>The loading dock access is not restricted to authorized personnel only</li> </ul>	65 %
<ul style="list-style-type: none"> <li>There are no security controls in place to prevent the introduction of foreign materials at point of loading</li> </ul>	77 %
<ul style="list-style-type: none"> <li>Goods for shipment are tracked by the use of electronic and hardcopy procedures.</li> </ul>	0 %
<ul style="list-style-type: none"> <li>Cargo handling and storage areas are not secured with perimeter walls, fencing or other barrier materials to prevent unauthorized access.</li> </ul>	52 %
<i>No fixed fence was used for loading/unloading area.</i>	
<ul style="list-style-type: none"> <li>The loading and departure of containers/trailers is not captured on CCTV and the recording is kept for 45 days</li> </ul>	40 %
<i>5 days.</i>	

## 76% Section: Physical Security

### SubSection: Plant Security

International Supply Chain Security Requirements & Criteria	
<b>The integrity of structures must be maintained by periodic inspection and repair</b>	
<b>All external and internal windows, gates, fences and doors must be secured with locking devices</b>	
<b>Management or security personnel must control the issuance of all locks and keys</b>	
<b>Alarm systems and video surveillance cameras should be utilized to monitor premises and prevent unauthorized access to cargo handling/storage areas</b>	
<b>Procedures for the issuance, removal, and changing of access devices (keys, key cards, etc) must be documented</b>	
<b>Procedures must be in place to remove identification and facility and system access for terminated employees</b>	
<b>Exceptions Noted:</b>	<b>Global Freq. of Compliance %</b>
<ul style="list-style-type: none"> <li>The facility does not have an automatic intrusion detection or alarm system</li> </ul>	38 %
<i>The intrusion detection or alarm system was not installed in sensitive access area or all of perimeter fencing.</i>	
<ul style="list-style-type: none"> <li>Locking devices do not protect the windows</li> </ul>	95 %
<ul style="list-style-type: none"> <li>Locking devices for doors and windows are not inspected</li> </ul>	88 %
<i>During audit, some windows in packing workshop were broken.</i>	
<ul style="list-style-type: none"> <li>There are no termination procedures in place to immediately terminate existing physical access when an individual terminates employment or transfers to another position with different access privileges.</li> </ul>	73 %
<ul style="list-style-type: none"> <li>Facility management does not review and approve the up-to-date list of employees with special access to controlled or sensitive areas</li> </ul>	49 %

Contact Us

Send Us a **secure** message. Complete the GSV on-line Compliments and Complaints feedback form 

Go Now



<ul style="list-style-type: none"> <li>Facility management does not review and approve the up-to-date list of employees with special access to controlled or sensitive areas</li> </ul>	49 %
<i>The name list in restricted area was not updated every three months by authorization.</i>	

### SubSection: Perimeter Security

International Supply Chain Security Requirements & Criteria	
<b>Cargo handling and storage facilities in international locations must have physical barriers and deterrents that guard against unauthorized access.</b>	
Exceptions Noted:	Global Freq. of Compliance %
<ul style="list-style-type: none"> <li>The facility has adjoining/overhanging structures or foliage which would potentially facilitate illicit entry over the fenced areas into the facility</li> </ul>	48 %
<i>Constructions and trees were closed to the perimeter.</i>	

### SubSection: Outside Lighting

International Supply Chain Security Requirements & Criteria	
<b>Adequate lighting must be provided inside and outside the facility, including entrances/exits, cargo handling/storage areas, fence lines, and parking areas</b>	
Exceptions Noted:	Global Freq. of Compliance %
<ul style="list-style-type: none"> <li>The inside and outside of the facility including around entrances and exits, cargo handling and storage areas, fence lines and parking areas do not have adequate lighting.</li> </ul>	70 %
<i>The lighting around the perimeter fencing was inadequate.</i>	

### SubSection: Security Force

International Supply Chain Security Requirements & Criteria	
<b>Security measures must be in place to ensure the integrity and security of processes relevant to the transportation, handling, and storage of cargo in the supply chain.</b>	
Exceptions Noted:	Global Freq. of Compliance %
<ul style="list-style-type: none"> <li>There is no communication process in place between the central security office and the exterior guard posts</li> </ul>	92 %
<i>The facility did not provide any communication tool to security guards.</i>	

### SubSection: Access Controls

International Supply Chain Security Requirements & Criteria	
<b>Access controls must include the positive identification of all employees, visitors, and vendors at all entry points</b>	
<b>Procedures must be in place to identify, challenge, and address unauthorized/unidentified persons</b>	
<b>Alarm systems and video surveillance cameras should be utilized to monitor premises and prevent unauthorized access to cargo handling and storage areas.</b>	
Exceptions Noted:	Global Freq. of Compliance %
<ul style="list-style-type: none"> <li>Employees' entries and exits are not recorded</li> </ul>	89 %
<i>Some employees' entries and exits was not recorded.</i>	
<ul style="list-style-type: none"> <li>Employees are not observed by and/or subject to security inspection when entering the building</li> </ul>	58 %
<i>No security inspection was conducted on all employees.</i>	
<ul style="list-style-type: none"> <li>The placement of the cameras does not provide an adequate view of activities in relevant areas</li> </ul>	62 %
<i>The views of activities in packing area were inadequate.</i>	
<ul style="list-style-type: none"> <li>Recordings (e.g., tapes or electronic files) are not kept for a minimum of 30 days or according to client specific requirement, whichever is longer.</li> </ul>	48 %
<i>5 days.</i>	



<ul style="list-style-type: none"> <li>The facility do not use Closed Circuit Television (CCTV) or another surveillance method to monitor activity in all sensitive areas within the facility.</li> </ul>	81 %
---	------

### SubSection: Visitor Controls

International Supply Chain Security Requirements & Criteria	
<b>Container integrity must be maintained to protect against the introduction of unauthorized material/person(s)</b>	
<b>Access controls must include the positive identification of all employees, visitors, and vendors at all entry points</b>	
<b>Visitors must present photo ID for documentation purposes upon arrival</b>	
<b>All visitors should be escorted and visibly display temporary ID</b>	
<b>For deliveries, proper vendor ID and/or photo ID must be presented documentation purposes upon arrival by all vendors</b>	
<b>Visitors must present photo identification for documentation purposes upon arrival.</b>	
Exceptions Noted:	Global Freq. of Compliance %
<ul style="list-style-type: none"> <li>There is no positive identification process for recording all vendors and repair personnel and facility does not have a written procedure to challenge, identify, and remove unauthorized/unidentified persons. <i>There were no IDs record in some visitor in-out log.</i></li> </ul>	84 %
<ul style="list-style-type: none"> <li>Photo identification is not required of all visitors. <i>There were no IDs record in some visitor in-out log.</i></li> </ul>	66 %

### SubSection: Entering / Exiting Deliveries

International Supply Chain Security Requirements & Criteria	
<b>Container integrity must be maintained to protect against the introduction of unauthorized material/person(s)</b>	
<b>Written procedures must stipulate how seals are controlled and affixed to loaded containers, including recognizing and reporting compromised seals and/or containers to local Customs authorities</b>	
<b>Measures must be in place to ensure the integrity and security of processes relevant to the transportation, handling, and storage of cargo in the supply chain</b>	
<b>All shortages, overages, and other significant discrepancies or anomalies must be resolved and/or investigated appropriately</b>	
<b>Measures must be in place to ensure the integrity and security of processes relevant to the transportation, handling, and storage of cargo in the supply chain.</b>	
Exceptions Noted:	Global Freq. of Compliance %
<ul style="list-style-type: none"> <li>Incoming and outgoing cargo vehicles are not checked. <i>No this checking record was available in the facility.</i></li> </ul>	80 %
<ul style="list-style-type: none"> <li>For conveyance entries/exits, logs are not maintained with truck license information</li> </ul>	84 %
<ul style="list-style-type: none"> <li>For conveyance entries/exits, records are not maintained for manifest check</li> </ul>	66 %
<ul style="list-style-type: none"> <li>Examinations of containers/trailers found with broken seals do not document other anomalies</li> </ul>	33 %

### SubSection: Employee / Visitor Parking

International Supply Chain Security Requirements & Criteria	
<b>Access controls prevent unauthorized entry to facilities, maintain control of employees and visitors, and protect company assets. Access controls must include the positive identification of all employees, visitors, and vendors at all points of entry.</b>	
Exceptions Noted:	Global Freq. of Compliance %
<ul style="list-style-type: none"> <li>Vendor and visitor vehicles are not inspected when enter facility area</li> </ul>	74 %
<ul style="list-style-type: none"> <li>Visitor parking lots are not located away from entrances and exits <i>The visitor parking lots were closed to main gate.</i></li> </ul>	84 %

### SubSection: Production, Assembly, Packing Security

International Supply Chain Security Requirements & Criteria
<b>Employees should only be given access to those secure areas needed for the performance of their duties</b>

Contact Us

Send Us a **secure** message. Complete the GSV on-line Compliments and Complaints feedback form

[Go Now](#)



**Procedures must be in place to identify, challenge, and address unauthorized/unidentified persons**

Exceptions Noted:	Global Freq. of Compliance %
<ul style="list-style-type: none"> <li>Employee access is not limited to the relevant areas of responsibility</li> </ul>	77 %

**84% Section: Records & Documentation**

**International Supply Chain Security Requirements & Criteria**

Exceptions Noted:	Global Freq. of Compliance %
<ul style="list-style-type: none"> <li>The facility has not designated a facility official responsible for security audits or evaluations</li> </ul> <p><i>No documented authorization.</i></p>	74 %
<ul style="list-style-type: none"> <li>The facility has not conducted a site security assessment</li> </ul> <p><i>No security assessment conducted before.</i></p>	71 %

**83% Section: Information Access Controls**

**International Supply Chain Security Requirements & Criteria**

**Procedures must be in place to ensure that all information used in clearing merchandise/cargo is legible, complete, accurate, and protected against the exchange, loss or introduction of erroneous information. Documentation control must include safeguarding computer access and information**

**A system must be in place to identify the abuse of IT, including improper access, tampering or the altering of business data**

Exceptions Noted:	Global Freq. of Compliance %
<ul style="list-style-type: none"> <li>There is no designated system administrator within the facility to set up the user IDs</li> </ul>	85 %
<ul style="list-style-type: none"> <li>There is no system in place to review periodically and maintain daily security logs for invalid password attempts and file access</li> </ul> <p><i>Invalid password attempts and file access were not reviewed daily and no reviewing records was available.</i></p>	34 %

**55% Section: Contractor Controls**

**International Supply Chain Security Requirements & Criteria**

**Foreign manufacturers must ensure that business partners develop security processes and procedures consistent with the C-TPAT security criteria to enhance the integrity of the shipment at point of origin, assembly or manufacturing. Periodic reviews of business partners' processes and facilities should be conducted based on risk, and should maintain the security standards required by the foreign manufacturer.**

**Foreign manufacturers must have written and verifiable processes for the selection of business partners including, carriers, other manufacturers, product suppliers and vendors (parts and raw material suppliers, etc).**

Exceptions Noted:	Global Freq. of Compliance %
<ul style="list-style-type: none"> <li>When selecting the contractors used by the facility, the facility does not consider the contractor's financial stability</li> </ul> <p><i>No checking record was provided for all contractors.</i></p>	58 %
<ul style="list-style-type: none"> <li>When selecting the contractors used by the facility, the facility does not consider the contractor's corporate history</li> </ul>	66 %
<ul style="list-style-type: none"> <li>When selecting the contractors used by the facility, the facility does not consider the contractor's hiring practices</li> </ul> <p><i>No checking record was provided for all contractors.</i></p>	39 %
<ul style="list-style-type: none"> <li>The facility or its designated third party auditor does not conduct on-site inspections of the contractors' implementation of related security standards/procedures.</li> </ul>	38 %





<i>No on-site inspections of record was provided for all contractors.</i>	
<ul style="list-style-type: none"> <li>The facility does not require its contractors to conduct self-assessment of their security policies and procedures and to share the results of those assessments with the facility</li> </ul>	30 %
<i>No checking record was provided for all contractors.</i>	

## 53% Section: Export Logistics

### International Supply Chain Security Requirements & Criteria

For those business partners eligible for C-TPAT certification (carriers, importers, ports, terminals, brokers, consolidators, etc.) the foreign manufacturer must have documentation (e.g., C-TPAT certificate, SVI number, etc.) indicating whether these business partners are or are not C-TPAT certified.

Foreign manufacturers must have written and verifiable processes for the selection of business partners including, carriers, other manufacturers, product suppliers and vendors (parts and raw material suppliers, etc).

Exceptions Noted:	Global Freq. of Compliance %
<ul style="list-style-type: none"> <li>When selecting carriers, the facility does not consider the carriers' financial stability</li> </ul>	61 %
<ul style="list-style-type: none"> <li>The facility does not require eligible and/or ineligible carriers to demonstrate security compliance standards.</li> </ul>	30 %
<i>The facility did not require eligible carriers to demonstrate C-TPAT certification or ineligible carriers to demonstrate compliance with C-TPAT equivalent standards.</i>	
<ul style="list-style-type: none"> <li>Facility does not conduct periodic unannounced security check to ensure that transport company is in compliance with the contract.</li> </ul>	26 %
<i>No such unannounced assessment was conducted.</i>	

## NS Section: Transparency In Supply Chain

■ Not Scored

### International Supply Chain Security Requirements & Criteria

Exceptions Noted:	Global Freq. of Compliance %
<ul style="list-style-type: none"> <li>There is no documented system in place to ensure that management is informed of and investigates all anomalies found in shipments including human trafficking.</li> </ul>	34 %
<i>No procedure was established.</i>	
<ul style="list-style-type: none"> <li>There is no documented cargo verification procedure in place to prevent unmanifested cargo and/or illegal aliens from being loaded.</li> </ul>	49 %
<i>No procedure was established.</i>	
<ul style="list-style-type: none"> <li>The facility does not conduct on-site inspections of the contractors' implementation of their security standards/procedures that includes compliance with human trafficking and slavery policies.</li> </ul>	22 %
<i>No procedure was established.</i>	
<ul style="list-style-type: none"> <li>The facility does not require its contractors to conduct self-assessment of their security policies and procedures including status of their compliance with human trafficking and slavery policies and share the results of those assessments with the facility.</li> </ul>	19 %
<i>No procedure was established.</i>	
<ul style="list-style-type: none"> <li>The facility does not have written or electronic confirmation of its partners' compliance with Business Transparency on Human Trafficking and Slavery Act (e.g., contract language, a letter of commitment signed at the management level or above, signed acknowledgement of receiving the facility's participation announcement).</li> </ul>	22 %
<i>No procedure was established.</i>	
<ul style="list-style-type: none"> <li>The facility does not have written security standards and documented procedures for selection of its contractors (contracts, manuals, etc.) and handling contractors failing to meet company standards regarding security and slavery and trafficking.</li> </ul>	25 %
<i>No procedure was established.</i>	

### Contact Us

Send Us a **secure** message. Complete the GSV on-line Compliments and Complaints feedback form 

Go Now



<ul style="list-style-type: none"><li>There is no written security awareness program covering awareness of current terrorist threat(s), human trafficking, smuggling trends, and seizures in place to ensure employees understand the threat posed by terrorist at each point of the supply chain.</li></ul>	24 %
<i>No procedure was established.</i>	

## VIII. Facility Photo for NINGBO JIAMING PRINTING CO.,LTD

### 1.Facility Entrance



### 2.Perimeter Fencing



### 3.Facility Building



#### 4. Employee Parking



#### 5. Visitor Parking



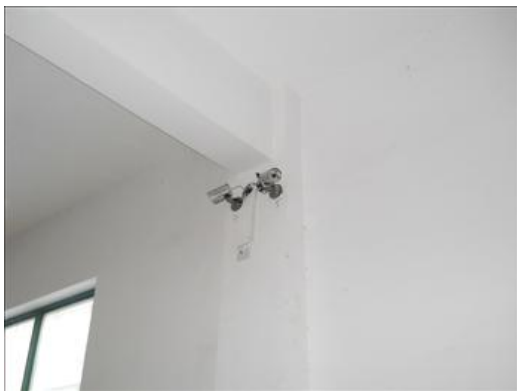
#### 6. Outside Lighting



## 7.Security Room- Communication Equipment



## 8.CCTV system and monitor



## 9.Packing Area



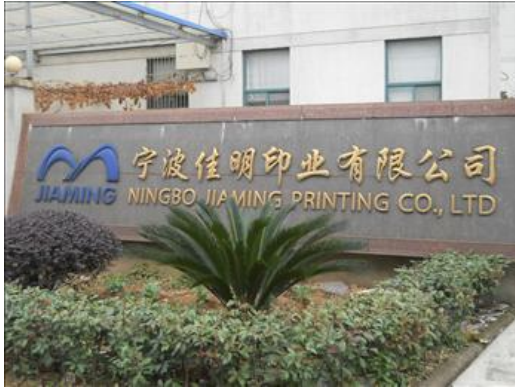
## 10.Finished Goods Warehouse



## 11.Loading Area



## 12. Facility Name



### DISCLAIMER

This report is for the exclusive use of the client of Intertek named in this report (“Client”) and is provided pursuant to an agreement for services between Intertek and Client (“Client Agreement”). No other person may rely on the terms of this report. This report provides a summary of the findings and other applicable information found/gathered during the audit conducted at the specified facilities on the specified date only. Therefore, this report does not cover, and Intertek accepts no responsibility for, other locations that may be used in the supply chain of the relevant product or service. Further, as the audit process used by Intertek is a sampling exercise only, Intertek accepts no responsibility for any non-compliant issues that may be revealed relating to the operations of the identified facility at any other date. Intertek’s responsibility and liability are also limited in accordance to the terms and conditions of the Client Agreement. Intertek assumes no liability to any party, for any loss, expense or damage occasioned by the use of this information other than to the Client and in accordance with the Client Agreement and these disclaimers. In case there is any conflict between the disclaimers stated herein and the applicable terms and conditions of Intertek incorporated into the Client Agreement, then these disclaimers shall prevail.