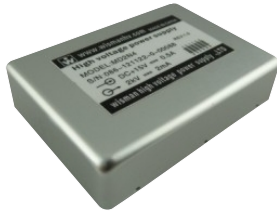


MD

High Voltage Power Supply High Series 0.8KV to 2KV 4W

wisman high voltage power supply



- 4W HIGH POWER PCB MOUNTABLE
- LOW RIPPLE, HIGH STABILITY, AND WELL REGULATED OUTPUT
- LOW NOISE DUE TO 6-SIDED SHIELDING
- ARC, CONTINUOUS SHORT CIRCUIT PROTECTION
- EXTERNAL POTENTIOMETER OR EXTERNAL CONTROL VOLTAGE PROGRAMMING

MD series is a compact, ultra low ripple and well regulated high voltage power supply suitable for various OEM or laboratory application.

Electrostatic shielding is provided through 6-sided shielding. All models are provided with arc and continuous short circuit protection for safe, reliable operation.

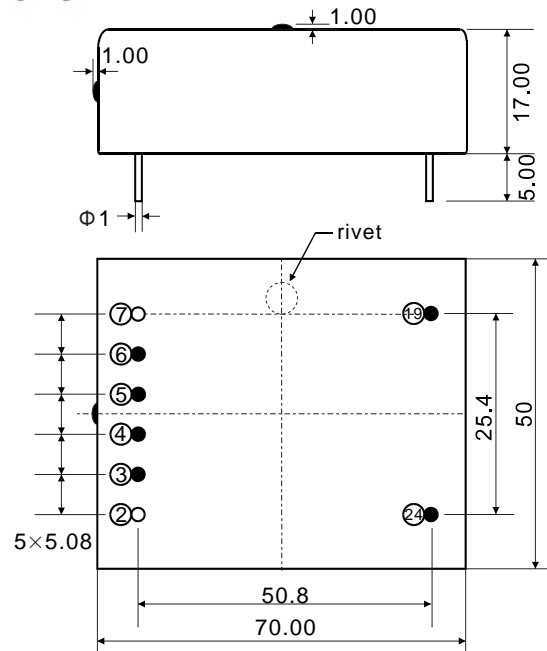
OPTIONS:

- Standard:** 5V programming, 5V display, accuracy 1%
- Input Voltage:** +12Vdc, MAX 550mA, 10.8V-13.2V
+24Vdc, MAX 300mA, 21.6V-26.4V
- Ripple:** rpx:x=5mV-100mV.
- Programming:** 6vpm-0 to 6 volt programming,
10vpm-0 to 10 volt programming.
- LS:** Remote ON/OFF GND = ON, OPEN = OFF
- L2:** Voltage monitor 1/1000 output, accuracy 2%
- C1:** optional dimension 60×40×17
- Example:** MD2N4LSLM6VPMRP10mV-24 MDseries, 2KV,
Negative voltage, 4W, Remote ON/OFF, Display: 1V=1000V,
Voltage programming: 0-6V, Ripple: 10mV, Input: 24Vdc

Output voltage (Kvdc)	Output current (mA)*	Model		Ripple (MVp-p)
		Positive polar output	Negative polar output	
0 to 0.8	5	MD-0.8P	MD-0.8N	10
0 to 1	4.2	MD-1P	MD-1N	20
0 to 1.5	2.7	MD-1.5P	MD-1.5N	30
0 to 2	2	MD-2P	MD-2N	40

*Output voltage range for this output current is 50% to 100% of maximum output voltage.
*Output current must be derated linearly when operating at levels below 50% of the output voltage capability.

DIMENSIONS:

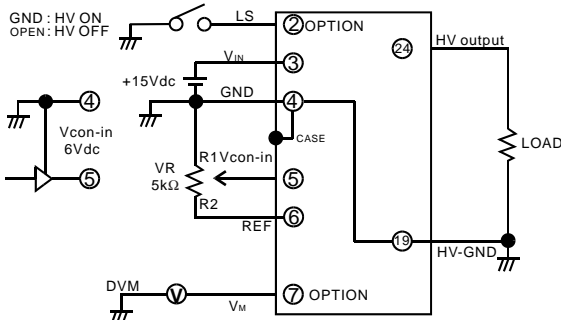


SPECIFICATIONS:

- Input:** +15Vdc, MAX 450mA, 13.5V-16.5
- Output Control:** By external 5k potentiometer or external control voltage (Vcon-in) 0 to 5 Vdc
- Output Power:** 4W (Option 1W, 2W, 3W, 5W.)
- Regulation:** Line: ±0.02% of max voltage for Vin ±1V.
Load: 0.02% of max voltage for full load change.
- Protection:** Overload, arc and continuous output short circuit.
- Temperature Coefficient:** 25ppm/°C
- Temperature range:** Operating: -10° C to +60° C
Storage: -25° C to +85° C
- Stability:** 0.01%/hour 0.03%/8hour.

Note: Specifications are at the maximum rated output after 1/2Hr warm-up.
Specifications are subject to change without notice.

CONNECTION DIAGRAM:



- PIN 4, 19 and case are internally connected, and should be always grounded.
- Input impedance of Pin 5 is greater than 30kΩ
- External potentiometer of T.C ≤ 100ppm/°C PC ≤ 1/4W is recommended.
- PIN 2, 7 are for option.

CHARACTERISTICS OF OUTPUT VOLTAGE SETTING:

