



- HIGH STABILITY
- LOW NOISE & RIPPLE
- SMALL CASE SIZE
- CUSTOMIZATION AVAILABLE

Wisman's new MG Series of high voltage power supplies represent. The MG series provide high voltage with very low ripple. Extremely stable voltage and current outputs result in significant performance improvements over previously available technology. Low output ripple provides higher intensity levels, with no increase in tube loading. Custom designed units for single use or OEM applications are available.

TYPICAL APPLICATIONS:

Electron multiplier Detectors and MPC, Electron and Ion Beams. Electrophoresis, lens. Spectrometers, Focusing Aid, Medical Treatment, Chemical Plant, Laboratory Application, Industry.

OPTIONS:

10VPM 0 to 10 volt programming and Monitor Scaling

SPECIFICATIONS:

Input:

12Vdc±1VDC , 0.1A maximum ,
 Option:-15: 15Vdc±1VDC , 0.1A maximum ,
 -24: 24Vdc±1VDC , 0.1A maximum ,

Output:

0.5KV,0.8KV,1.1KV,1.25KV,1.5KV,1.8KV,2KV
 POWER:MAX 1 W

Voltage Regulation:

0.01% of output voltage no load to full load.

Ripple:

0.001% p-p of maximum rated output voltage.

Environmental:

Operational: 0° C to +50° C
 Storage: -40° C to +85° C
 Humidity: 0% to 90%, non-condensing

Temperature Coefficient:

25ppm per ° C

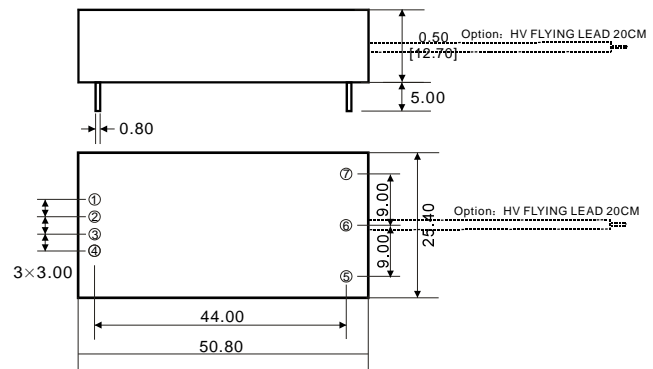
Stability:

0.01% per hour, 0.03% per 8 hours, after a 1/2 hour warm-up.

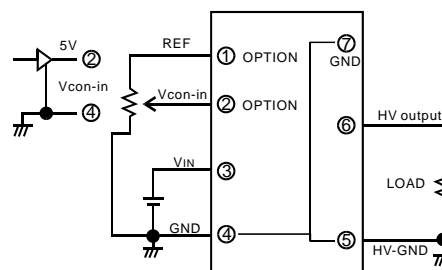
Dimensions:

Standard unit: 2.00" H x 1.00" W x 0.50" D
 (50.80mm x 25.40mm x 12.70mm)

DIMENSIONS:



CONNECTION DIAGRAM:



1. PIN④,⑤,⑦are internally connected, and should be always grounded.
2. External potentiometer of T.C ≅ 100ppm/° C PC ≅ 1/4W is recommended.
3. PIN①,② are for option.

CHARACTERISTICS OF OUTPUT VOLTAGE SETTING:

