

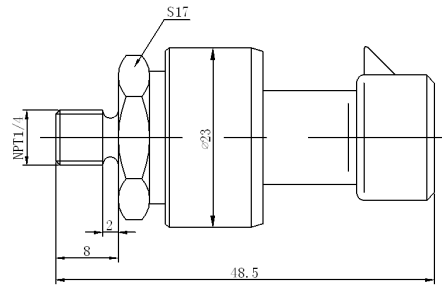
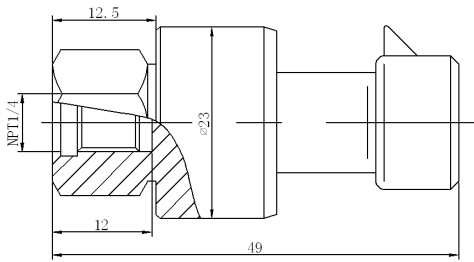
WEIGHING*SENSING*MEASUREMENT

PT01



Applications:

- Auto oil pressure, LPG, Gas pressure(HVAC), etc.
- Quick connector, easy to install
- Rugged design, strong performance



Please Note: Pressure port and dimensions could be OEM designed

<i>Product Specifications</i>		
<i>Pressure Range</i>	<i>0~0.7Mpa, 1Mpa, 1.6Mpa, 3.5Mpa, 10MPa...70Mpa 0~100psi, 1500psi, 500psi...1000psi</i>	
<i>Combined pressure</i>	<i>Any (e.g. -100Kpa~3Mpa)</i>	
<i>Accuracy</i>	<i>0.5%FS, 1%FS, 2%FS (Optional)</i>	
<i>Overload</i>	<i>2 times rated pressure</i>	
<i>Media Contact</i>	<i>Compatible with 316L stainless steel</i>	
<i>Power supply</i>	<i>9-32V</i>	<i>5V</i>
<i>Operating current</i>	<i>≤10mA</i>	<i>≤15mA</i>
<i>Output</i>	<i>0-5V / 4-20mA</i>	<i>0.5-4.5V, 1-5V</i>
<i>Operating Temp.</i>	<i>-40~150°C, -20~110°C, -20~80°C (Option)</i>	
<i>Pressure Port</i>	<i>7/16UNF NPT 1/4, G1/4 (Other:OEM)</i>	
<i>Protection</i>	<i>overvoltage protection, EMC</i>	
<i>Electrical Connector</i>	<i>3-pin cable, 3-pin Packard connector</i>	
<i>Long term stability</i>	<i>0.2%FS/year(Typical)</i>	
<i>Housing Material</i>	<i>304L or 316L Stainless steel</i>	
<i>Explosive proof</i>	<i>Exia II CT5</i>	

ALL THE SPECIFICATIONS ARE SUBJECT TO CHANGE WITHOUT PRIOR NOTICE
SENTECHS CO., LIMITED WWW.SENSORTECHNICS.COM
TEL: +86-574-66267500 FAX: +86-574-62805266