



XX-25123000 Planetary Series SGMADA®

(12VDC STANDARD)

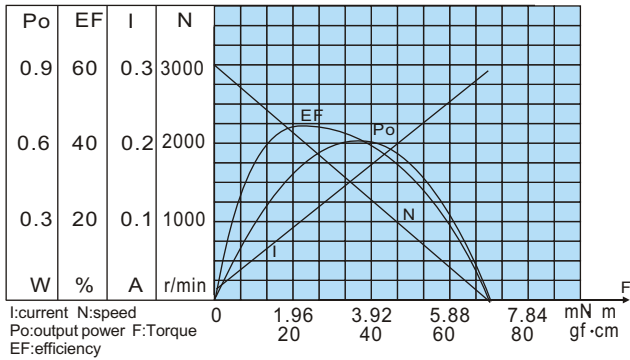
DC GEARED MOTOR

OUTPUT POWER: 0.4W (APPROX)

WEIGHT: 80~90g (APPROX)

Typical applications: Automat, electrical controlled valve, robot, door locks, auto shutter, water meter IC card, central heating IC card, automatic energy saving bath, aeromodelling, electronic locks, kind of finger-electroni lock.

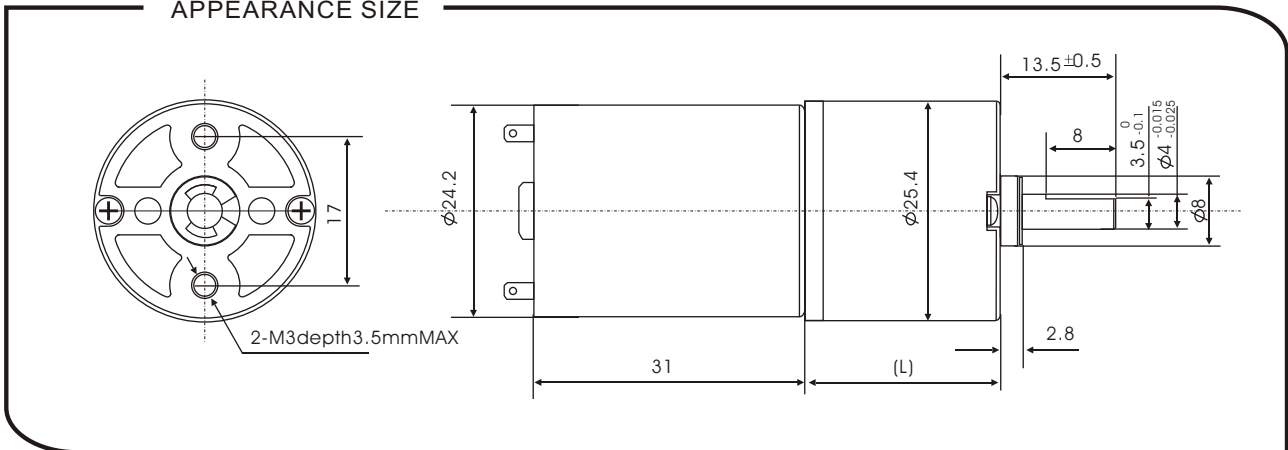
MOTOR CHARACTERISTICS



MOTOR TORQUE/SPEED/CURRENT

| | |
|-----------------|----------------------|
| Rated voltage | 12VDC |
| No load speed | 3000r/min |
| No load current | 40mA |
| Rated torque | 20gf · cm 1.96mN · m |
| Rated current | 90mA |
| Rated speed | 2100r/min |
| Stall torque | 70gf · cm 6.86mN · m |
| Stall current | 0.3A |

APPEARANCE SIZE



GEARED MOTOR TORQUE/SPEED/CURRENT

| Geared motor name | Rated Volt. V | No load | | Load torque | | | | At maximum efficiency | | Output power W | Number of gear trains | Gearbox length "L" mm |
|-------------------|----------------------------------|------------|-------------|-------------|-------------|----------|-------|-----------------------|-------|----------------|-----------------------|-----------------------|
| | | Current mA | Speed r/min | Current mA | Speed r/min | Torque | | Kgf · cm | N · m | | | |
| | | | | | | Kgf · cm | N · m | | | | | |
| XX-25123000-4K | 12 | ≤40 | 750 | ≤90 | 550 | 0.07 | 0.007 | 0.21 | 0.02 | 0.4 | 1 | 18 |
| XX-25123000-16K | 12 | ≤40 | 185 | ≤90 | 131 | 0.28 | 0.027 | 0.84 | 0.08 | 0.36 | 2 | 18 |
| XX-25123000-22.5K | 12 | ≤40 | 133 | ≤90 | 93 | 0.39 | 0.038 | 1.17 | 0.11 | 0.36 | 2 | 18 |
| XX-25123000-64K | 12 | ≤40 | 46 | ≤90 | 33 | 0.97 | 0.095 | 2.91 | 0.29 | 0.32 | 3 | 23 |
| XX-25123000-90K | 12 | ≤40 | 33 | ≤90 | 23 | 1.39 | 0.136 | 4.17 | 0.41 | 0.32 | 3 | 23 |
| XX-25123000-107K | 12 | ≤40 | 28 | ≤90 | 19.6 | 1.63 | 0.16 | 4.89 | 0.48 | 0.32 | 3 | 23 |
| XX-25123000-256K | 12 | ≤40 | 11.5 | ≤90 | 8.2 | 3.66 | 0.36 | 11.0 | 1.08 | 0.3 | 4 | 28 |
| XX-25123000-304K | 12 | ≤40 | 9.8 | ≤90 | 6.9 | 4.35 | 0.43 | 13.1 | 1.28 | 0.3 | 4 | 28 |
| XX-25123000-361K | 12 | ≤40 | 8.3 | ≤90 | 5.8 | 5.17 | 0.51 | 15.5 | 1.53 | 0.3 | 4 | 28 |
| XX-25123000-428K | 12 | ≤40 | 7.0 | ≤90 | 4.9 | 6.12 | 0.60 | 18.4 | 1.80 | 0.3 | 4 | 28 |
| XX-25123000-509K | 12 | ≤40 | 5.8 | ≤90 | 4.1 | 7.32 | 0.72 | 22.0 | 2.16 | 0.3 | 4 | 28 |
| Packing Details | CTN size: 41X26XH23CM 100pcs/CTN | | | | N.W. 11Kgs | | | | | | | |