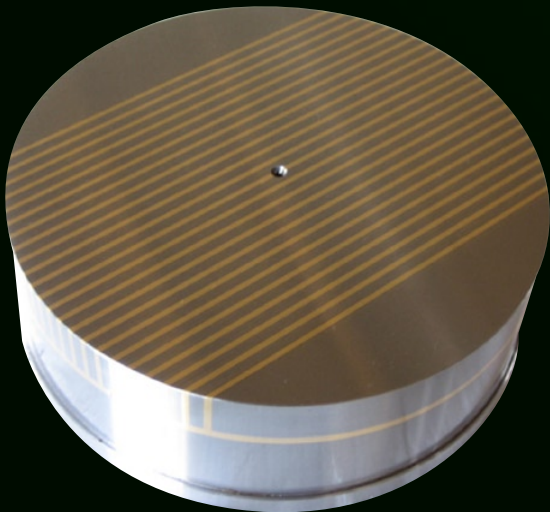




Ningbo Realpower Magnetic Industry Co.,Ltd.

RMF SERIES

Fine Pole Round Magnetic Chuck



With fine parallel pole pitch P = 1+3 mm Pole pitch:
steel 3 mm, brass 1 mm

Use:

Clamping of small and thin
to medium-sized workpieces.

Features:

- Extremely low height due to use of neodymiumiron-boron magnets.
- Pole pitch P = 4 mm.
- Nominal holding force: 30 N/cm²
- Magnetic field height: 8 mm
- Pole plate wearing limit: 5 mm
- Pole pitch: steel 3 mm, brass 1 mm

We can also design and produce as
client's requirements

Specifications

Model	Dimensions(mm)					Weight in kg
	A	B	C	D	E	
RMF125	125	55	100	22	M6(4x)	4.5
RMF150	150	55	125	20	M6(4x)	7.5
RMF200	200	55	150	20	M8(4x)	12.0
RMF250	250	55	200	24	M10(4x)	18.0
RMF300	315	55	250	24	M10(4x)	29.0
RMF350	350	55	280	210	M10(4x)	33.0
RMF400	400	55	315	325	M10(4x)	47.0

other size on request