



100 PAIRS 110 WIRING BLOCK

110 WIRING BLOCKS WB100-A3W WB100-A3Y



FIBER OPTIC
SOLUTION PRODUCTS

CABINET & ENCLOSURE

TELECOMMUNICATION
SERIES

MINI LAN SOHO
SOLUTION PRODUCTS

TOOLS & TESTERS

INDEX

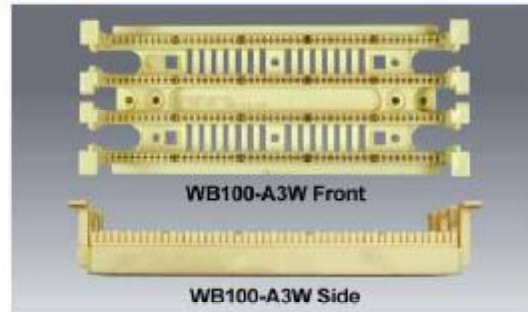
Products Description

Wall-mount 110 wiring blocks create compact, adaptable 110 termination field for voice and data by mounting 110 wiring bases to the wall or a backboard. Bases come in 50-, 100- or 300-pair densities. The 100-pair bases may be ordered with or without standoff legs which provide more room behind the base for cable.

Features and benefits

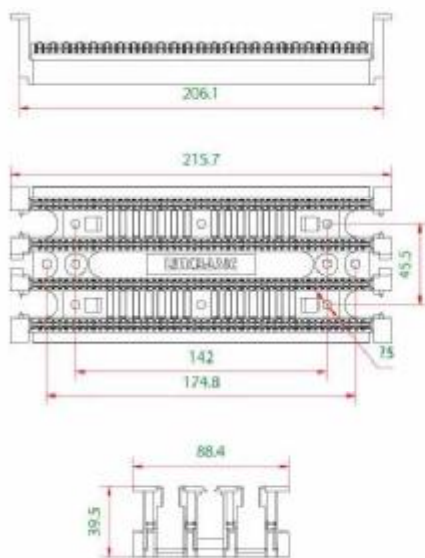
- Type : 100 pairs rack mount 110 wiring block
- Available with legs or without legs to the wiring base
- Easy to adjust , easy to embed wires in
- Wiring blocks are designed to support voice and high-speed data application
- Offering a reliable and economical high -density system
- The terminal blocks accommodate 22-26 AWG with a insulation diameter of 0.4-0.64 mm
- IDC contact material : phosphor bronze with tin plating over nickel
- Available with T568 A . T568 B wiring pattern

Photo

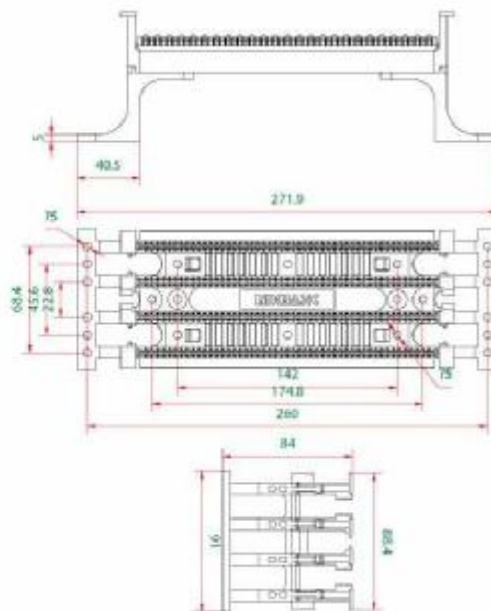


Presentation

WB100-A3W Presentation

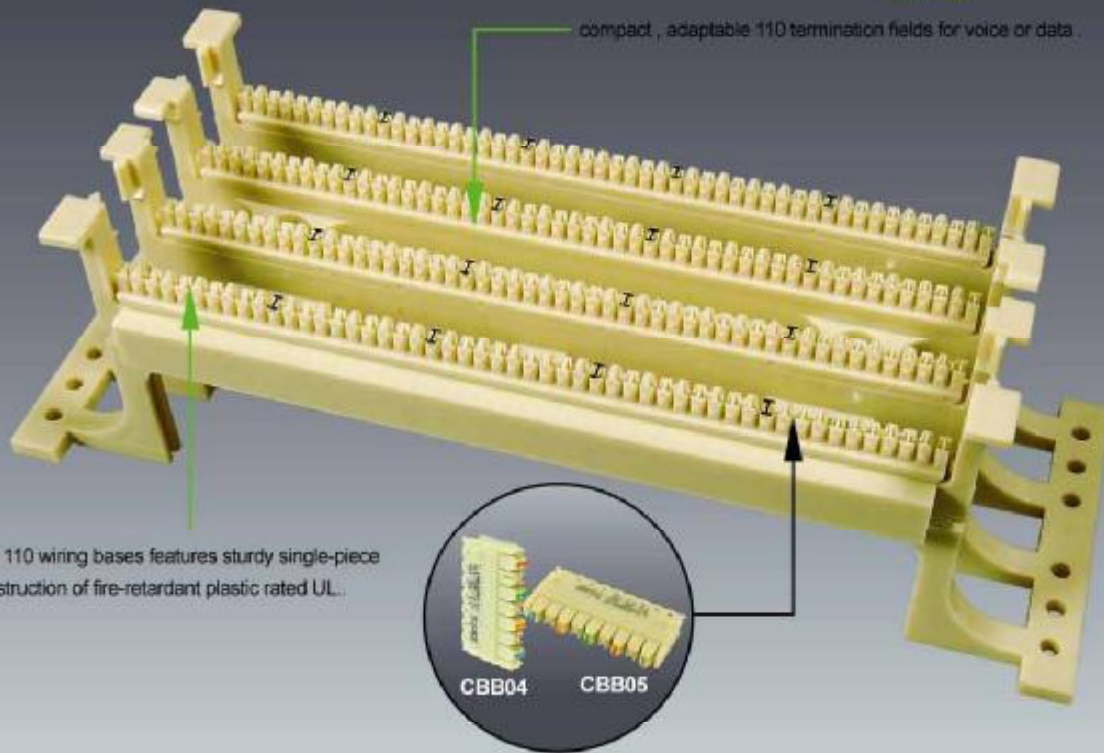


WB100-A3Y Presentation



100 PAIRS 110 WRING BLOCK

110 WIRING BLOCKS WB100-A3W WB100-A3Y



compact, adaptable 110 termination fields for voice or data.

The 110 wiring bases features sturdy single-piece construction of fire-retardant plastic rated UL...

FIBER OPTIC
 SOLUTION PRODUCTS

CABINET & ENCLOSURE

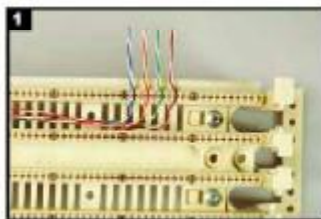
TELECOMMUNICATION
 SERIES

MINI LAN SOHO
 SOLUTION PRODUCTS

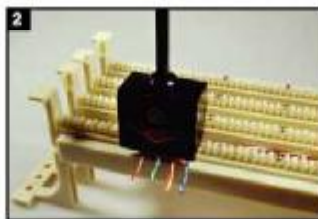
TOOLS & TESTERS

INDEX

Installment instructions



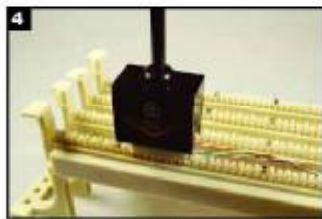
1 Insert each wire into the appropriate channel.



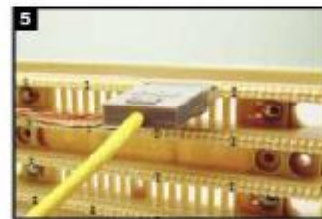
2 Terminate wires using Linkbasic tool (P/N: TLB01) or equivalent.



3 4-pair impact tool seats connecting blocks.



4 Install connecting block in the wiring block tightly.



5 Insert patch plug into connecting block, and ensure them in tight connection.

Order Information

Part number	Description	Inner box	Carton	Carton measurement	Carton weight
WB100-A3W	100 pairs 110 Wiring block without legs	1PC	20PCS	L 54cm × W 49cm × H 22cm	8.5KG
WB100-A3Y	100 pairs 110 wiring block with leg	1PC	20PCS	L 61cm × W 54cm × H 22cm	10.5KG

The end to end network cabling solution
 Linkbasic information technology co.,ltd A brief introduction

LINKBASIC
 Network Cabling Systems