

CAT 6 48-PORT PATCH PANEL

PATCH PANELS PND48-UC6 PND48-UC6-C



Photo



PND48-UC6-C Front



PND48-UC6-C Rear



PND48-UC6 Front

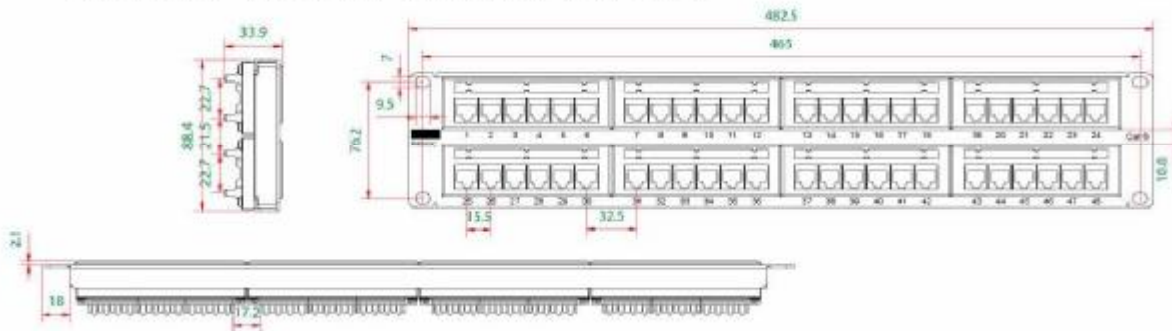
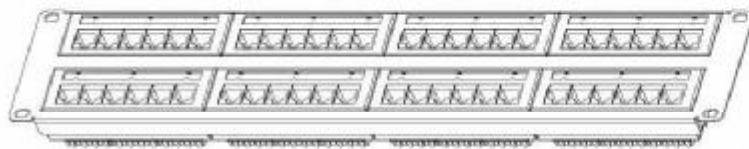


PND48-UC6 Rear



Support Bar

Presentation



Products Description

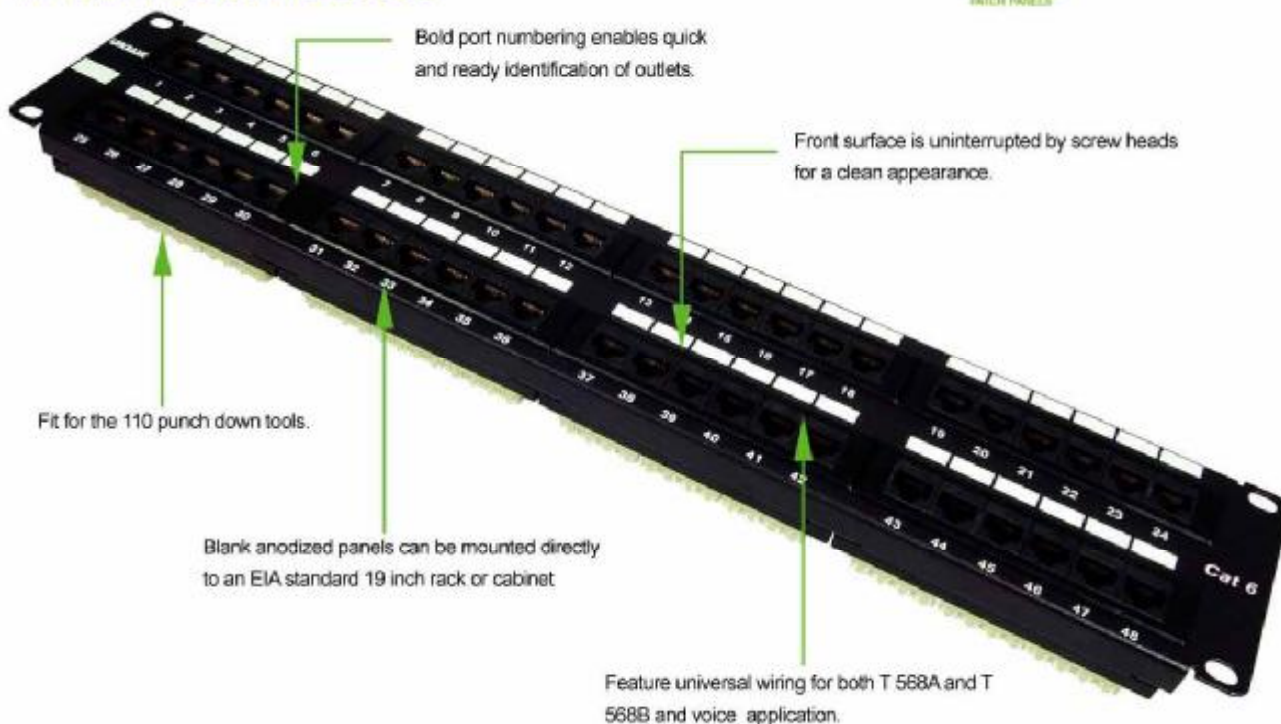
The patch panel is a 19 inch rack mountable RJ45 jack panels , Each panel has cutouts that accept virtually all snap-in jacks , the kits includes the new icon labels with plastic holders that you mount on the front of the panel for easy port identification .Blank anodized panels can be mounted directly to an EIA standard 19 inch relay back or cabinets .

Features and benefits

- Design to mount to any standard 19" rack or cabinet
- 48 -port Cat 6 Patch panel
- Space saving ,high-density 2U
- Black Electrostatic Powder-Coated Steel: phosphor bronze with tin plating over nickel . Meet or exceed the requirement of ANSI /TIA/EIA 568B.2
- Use keystone jacks and keystone inserts to configure your panel to accommodate a variety of schemes
- Sturdy Aluminum Plate around RJ 45 Jacks
- Phosphor bronze with 6-50 micro inches gold plated
- Available with T568 A .T568 B wiring pattern and meeting the requirement of Cat 6 standard
- Color Coded TIA/EIA 568A (international) and 568B (AT & T Standard) Wiring For Easy Installation
- Termination accepts 22,24 26 AWG (0.64 ,0.5 and 0.4)solid wires
- Metal sheet: Corrosion resistant steel
- Plastic :fire self -extinguish high impact plastic

CAT 6 48-PORT PATCH PANEL

PATCH PANELS PND48-UC6



Bold port numbering enables quick and ready identification of outlets.

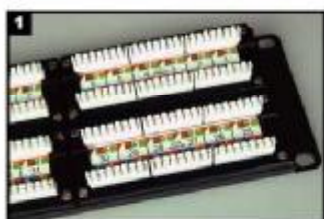
Front surface is uninterrupted by screw heads for a clean appearance.

Fit for the 110 punch down tools.

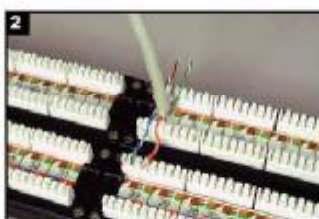
Blank anodized panels can be mounted directly to an EIA standard 19 inch rack or cabinet

Feature universal wiring for both T 568A and T 568B and voice application.

Installment instructions



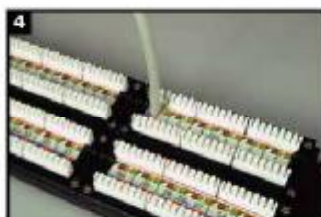
View the color on the rear of the panel to determine proper location of the conductors based upon preferred wiring scheme.



Insert each wire into the appropriate channel according to the color code on the panel, keep the cable perpendicular to the module.



Terminate wires using Linkbasic tool (P/N: TLA01) or equivalent.



Inspect wires to ensure proper color-coding following termination.



Panel assemblies.

Order Information

Part number	Description	Inner box	Carton	Carton measurement	Carton weight
PND48-UC6	Cat 6 48-port patch panel	1PC	5PCS	L 53.5cm × W 31.3cm × H 23.4cm	13.5KG
PND48-UC6-C	Cat 6 48-port patch panel	1PC	5PCS	L 53.5cm × W 31.3cm × H 23.4cm	13.5KG