



CAT 5E 24-PORT PATCH PANEL

PATCH PANELS PNG24-SC5E



Products Description

The shielded patch panels are loaded with shielded keystone jacks , which are housed in a closure full shielding metal enclosure designed to meet highest industry requirement.A shielded version is also available to maximum protection from EMI/RFI interference. By utilizing fully shielded jacks and connecting hardware, you can reduce the effects of interference on the network data transmissions.

Features and benefits

- Design to mount to any standard 19" rack or cabinet
- 24 -port Cat 5E Patch panel
- Space saving ,high-density 1U
- Black Electrostatic Powder-Coated Steel; phosphor bronze with tin plating over nickel . Meet or exceed the requirement of ANSI /TIA/EIA 568B.2
- Use keystone jacks and keystone inserts to configure your panel to accommodate a variety of schemes
- Sturdy Aluminum Plate around RJ 45 Jacks
- Phosphor bronze with 6-50 micro inches gold plated
- Available with T568 A ,T568 B wiring pattern and meeting the requirement of Cat 6 standard
- Color Coded TIA/EIA 568A (international) and 568B (AT&T Standard) Wiring For Easy Installation
- Termination accepts 22,24 26 AWG (0.64 ,0.5 and 0.4)solid wires
- Metal sheet: Corrosion resistant steel
- Plastic :fire self -extinguish high impact plastic

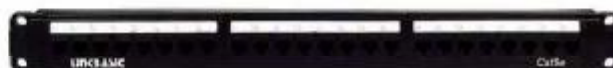
Photo



JKG06-SC5E



PANEL

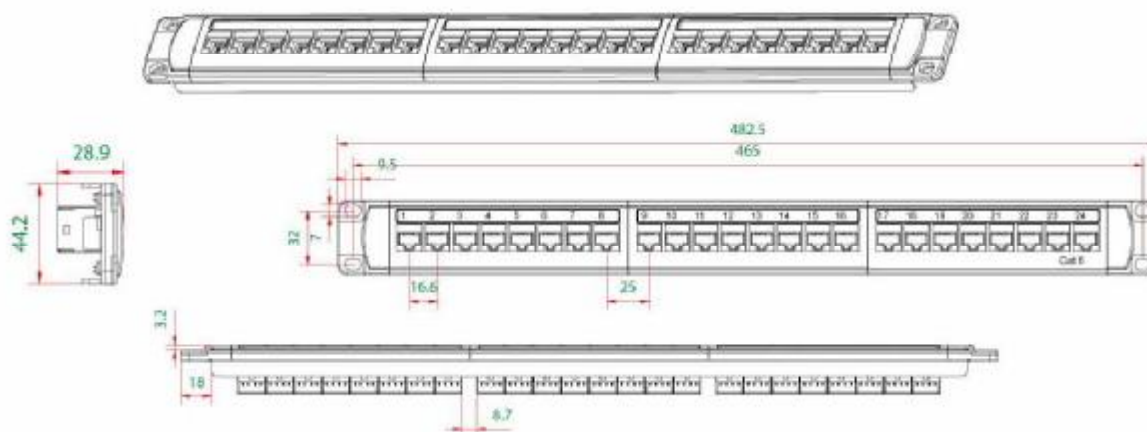


Mounting Jacks



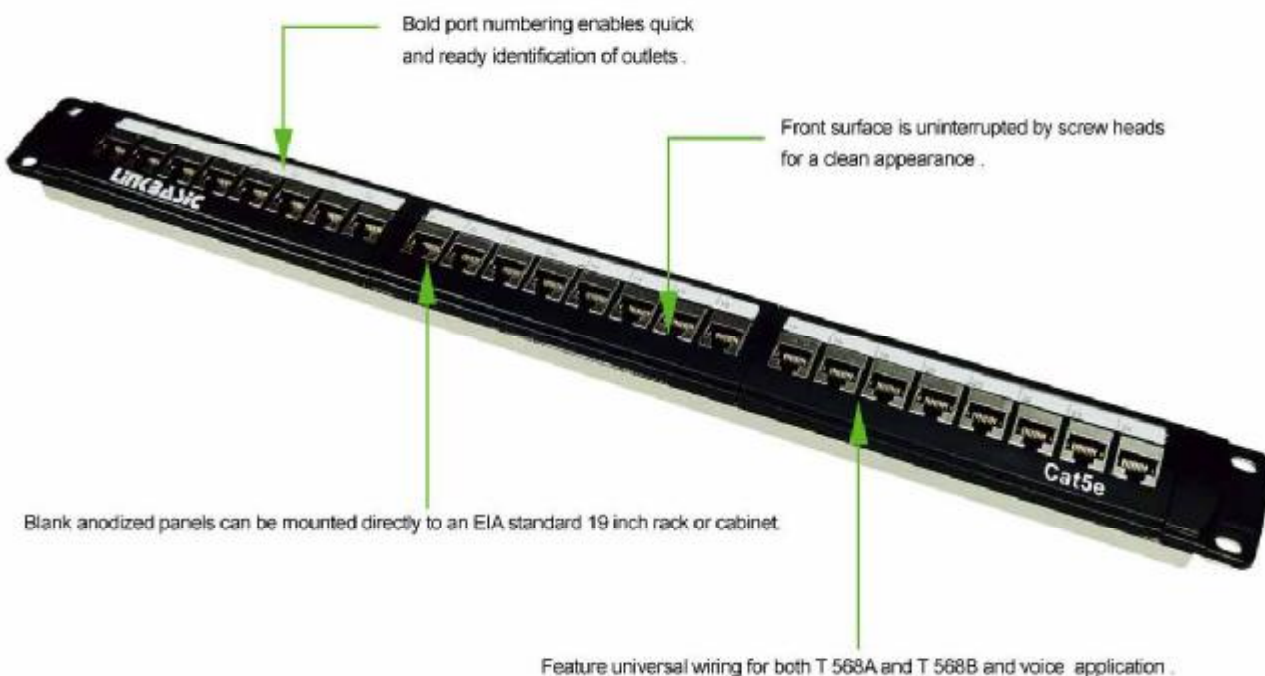
Support Bar

Presentation



CAT 5E 24-PORT PATCH PANEL

PATCH PANELS PNG24-SC5E



Bold port numbering enables quick and ready identification of outlets.

Front surface is uninterrupted by screw heads for a clean appearance.

Blank anodized panels can be mounted directly to an EIA standard 19 inch rack or cabinet.

Feature universal wiring for both T 568A and T 568B and voice application.

Installation instructions



The bracket of Cat 5E patch panel.



Position the shielded keystone jack for installation.



Insert the jack into the mounting location properly.

Order Information

Part number	Description	Inner box	Carton	Carton measurement	Carton weight
PNG24-SC5E	Cat 5E 24-port patch panel	1PC	10PCS	L 53.5cm × W 31.3cm × H 23.4cm	10KG